

SKETCH OF PLAN PROPOSED SUBDIVISION PLAN OF  
 LOTS 1 AND 21  
 BOTH OF GOVERNMENT RESERVE LYING BETWEEN  
 DISTRICT LOTS 226 AND 256 GROUP 1  
 NEW WESTMINSTER DISTRICT  
 PLAN 15859

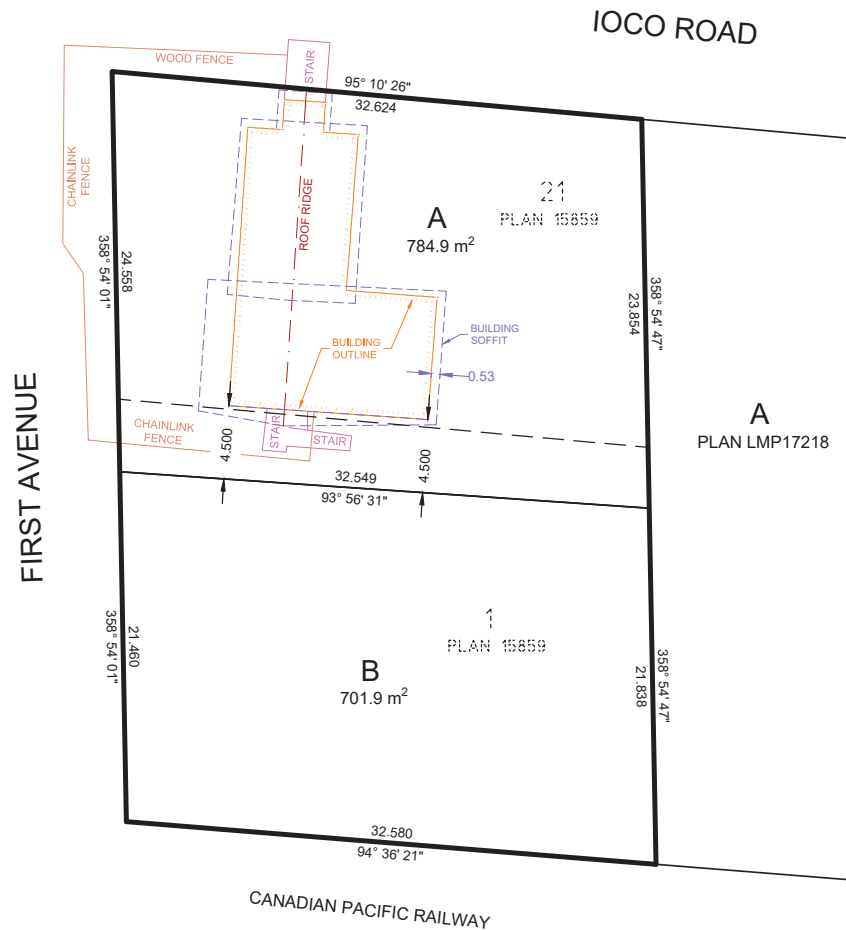
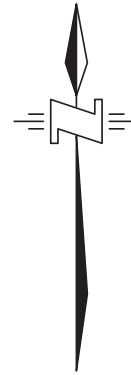
SCALE 1 : 300



ALL DISTANCES ARE IN METRES AND DECIMALS THEREOF  
 THE INTENDED PLOT SIZE OF THIS PLAN IS 432 mm IN WIDTH BY  
 280 mm IN HEIGHT (B-SIZE) WHEN PLOTTED AT A SCALE OF 1:300

LEGEND:

m2 DENOTES SQUARE METRE(S)



McELHANNEY ASSOCIATES  
 LAND SURVEYING LTD.  
 Suite 2300  
 13450 102nd Avenue  
 Surrey BC  
 Canada V3T 5X3  
 Tel 604 596 0391

OUR FILE NO. 2112-08952-00  
 OUR DRAWING NO. V-03 R3.DWG  
 JULY 29, 2020