

3.19 guiding principles transportation

OCP transportation

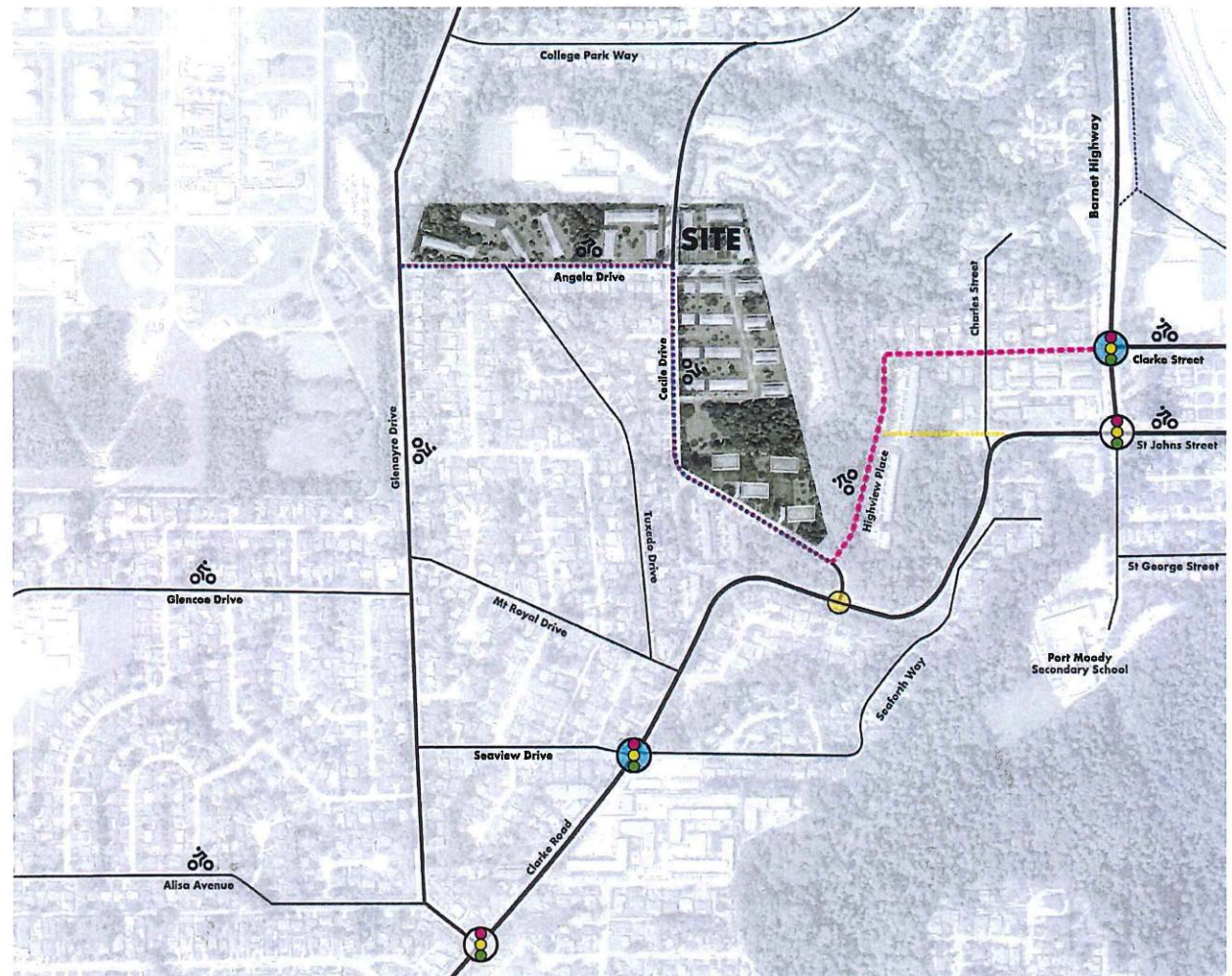
To increase transit, bicycle, and pedestrian facilities which **promote transportation choices** and reduce the use of the private automobile and the congestion and pollution which accompanies it.

proposal

The proposed development will facilitate traffic access to and from the site with the introduction of a **through traffic signal** at the **Clarke St** and **Barnet Highway** junction.

The proposal will provide **electric bicycles** and a potential **car share**, supplementing the existing commuter **180 bus route**, which provides access to the **Port Moody** and **Burquitlam** town centres and transit stations.

- new separated bikeway — — —
- proposed vehicle route - - -
- potential vehicle route - - -
- existing traffic signal (traffic signal icon)
- proposed traffic signal (traffic signal icon)



transportation - neighbourhood