



Solid Waste & Recycling Report

ACHIEVING WASTE DIVERSION IN THE
CITY OF PORT MOODY (2018-2019)

JANUARY 2020

ENGINEERING AND OPERATIONS DIVISION

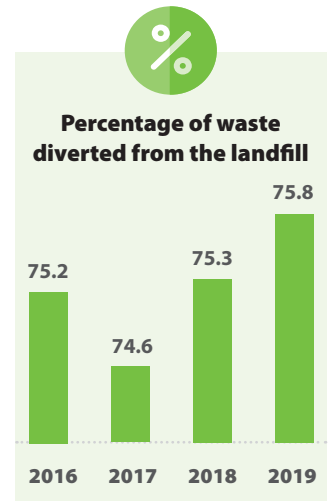
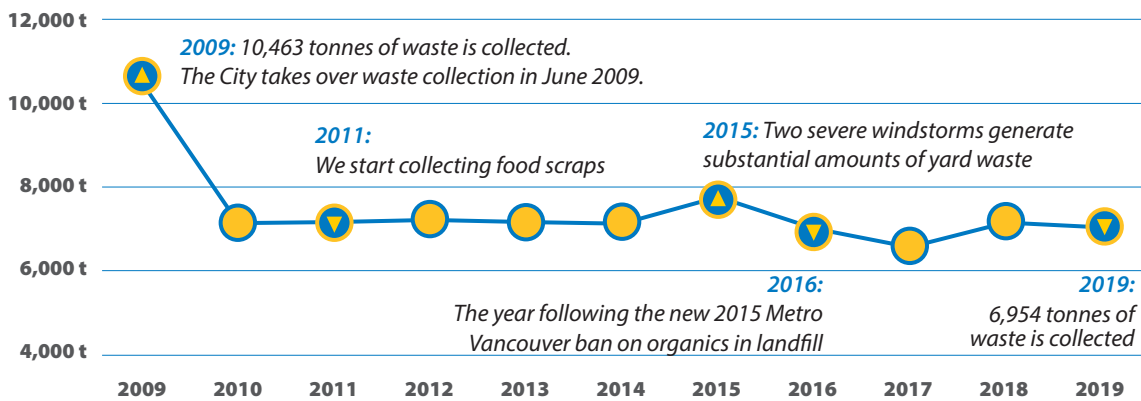


PORT MOODY
CITY OF THE ARTS

Program Overview – 2019 marked the tenth year of the City of Port Moody's in-house solid waste collection program. We proudly serve our residents, picking up green waste, recycling, glass, and garbage for over **10,000 households**. Our focus is operating an efficient and effective service that positively benefits the community.



Tracking over a decade of waste volumes:



KEY CONTACTS

Jeff Moi

General Manager,
Engineering and Operations
604.469.4700
jmoi@portmoody.ca

Paul Leblanc

Manager, Solid Waste,
Fleet and Shared Services
604.469.4747
pleblanc@portmoody.ca

Donna Bucsis

Solid Waste and
Recycling Coordinator
604.469.4742
recycle@portmoody.ca

Deavon Bilodeau

Solid Waste and
Recycling Supervisor
604.469.4537
dbilodeau@portmoody.ca



Recycling (including glass)

2018



Homes
Served

11,440



Tonnes
collected

2,172

Household average: 190kg

2019



Homes
Served

11,503



Tonnes
collected

2,184

Household average: 190kg



Green Waste

2018



Homes
Served

7,267



Tonnes
collected

3,099

Household average: 426kg

2019



Homes
Served

7,251



Tonnes
collected

3,088

Household average: 426kg



Garbage

2018



Homes
Served

6,595



Tonnes
collected

1,769

Household average: 268kg

2019



Homes
Served

6,577



Tonnes
collected

1,682

Household average: 256kg

Recycle BC and Port Moody

The City has completed six years of recycling collection under Recycle BC and continues to collect a higher volume than the average levels set by the program. Contamination rates continue to be a challenge. Current rates are 11.9% at multi-family buildings and 9.8% from single family homes. We are constantly working to lower these percentages through a combination of communication, audits, and in severe cases, refusal of contaminated carts.



Going for Green

44% of the total amount of waste we collect is from green carts. Diverting food and other organic material from the landfill makes a big impact in lowering our carbon footprint.



Dog Waste Diversion

Between 2018–19, the City's Dog Waste Diversion program removed 30 tonnes of dog waste from landfills. Look for red bins at popular parks and trailheads. In 2019, we expanded the program from five to 10 locations.

Wildlife – Surrounded by forests and mountains, wildlife sightings are common in Port Moody. The City's Bear Essentials program focuses on effectively reducing attractants, and preventing wildlife conflicts. Efforts by Bylaws, Operations, Communications, and Environment staff aim to keep people and bears safe through a combination of education and enforcement.

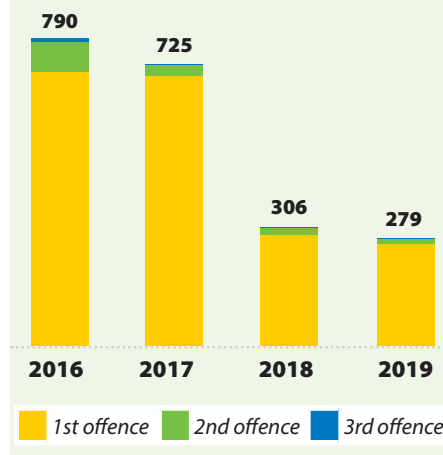


Residents are responding

Residents are getting the message that managing access to garbage is one of the most important action to take to keep people and bears safe in our community. The total number of citations written under Solid Waste Bylaw No. 3058 has decreased since 2016, even with the same level of annual enforcement. Better yet, tickets written for second and third offenses have declined from 86 in 2016 to 16 in 2019.



Total citations issued (under Bylaw 3058)



Communication Tools & Outreach

The City engages residents and stakeholders through a range of print and digital marketing.



Annual Calendar

The City prints and distributes 12,000 calendars to residents and businesses. It includes a collection schedule, easy tips on using carts, facts on managing bear attractants, and disposal resources.



Solid Waste App

Close to 6,000 residents use the City's Solid Waste App, which offers collection day prompts and seasonal messaging. Residents can also search for where to dispose of tricky items using the Waste Wizard.



Targeted Campaigns

The City has developed and implemented campaigns about recycling, and managing wildlife attractants. We also partnered with Metro Vancouver on a number of initiatives, including "love food, hate waste", "create memories, not garbage", and unflushable materials.



DreamRider Theatre

The City partnered with DreamRider Theatre, who performs shows focused on the environment and climate for close to 3,000 Port Moody elementary school students.



New Event Requirements

In 2019, we introduced the Festival and Special Events handbook, the Sustainable Events Policy, and the Special Event Waste Management Planning Tool. These tools help organizers effectively plan and manage their event waste.



Adopt-A-Street

Applicants make a once-a-month commitment to help maintain litter-free public sidewalks, bike paths and walkways. Over 25 groups consisting of close to 100 participants cover over 100 blocks in Port Moody.



Centralized Recycling Day

Residents have dropped off over two tonnes of wrapping paper, cardboard, packaging, Styrofoam, plastic overwrap, and film per year at this popular post-Christmas event.



City-Wide Garage Sale

Bargain hunters, and those wishing to reuse, resell, or recycle items enjoy this popular annual event. Over 140 households participated in this event in 2018 and 2019.



Car-Free Day

25,000+ attendees at Port Moody's 2019 Car-Free Day. Green Chair Recycling helped us successfully divert 322kg of recycled materials, which is the equivalent to a diversion rate of 77.2%.



Public Works Day

Staff welcomed hundreds of students and residents to Port Moody's Works Yard for informative Public Works exhibits, and live demonstrations of various equipment.

83

Number of events the City's Waste Reduction Station has been used at since 2016.

28

Number of calls the City received on illegal dumping in 2019. This number is down from 77 calls in 2018.

200

Number of public litter cans in city parks and streets. We are currently replacing older models with bear-proof cans.

Future Opportunities and Next Steps

- In November 2019, the City **increased its fines for certain Solid Waste Bylaw infractions**, such as leaving waste carts unlocked on non-collection days and setting out carts for collection too early. These infractions **now carry a fine of \$500 for a first offence**, up from \$50. We know that managing garbage and other wildlife attractants is the most effective action to keep people and bears safe. Moving forward, we will be communicating this key message to residents as part of a strategy to help ensure that bears don't become dependent on human food.
- Future recycling goals within the province include even higher recovery rates of materials that impact the environment, and measures that initiate reduction, reuse and recycling of **single-use items** such as plastic bags, disposable cups, straws and foam will need consideration.