

Considered at June 25, 2019 Regular Council Meeting

Council Agenda Information

☒ Regular Council June 25, 2019

Item 9.6



City of Port Moody Report/Recommendation to Council

Date: June 13, 2019 File No. 11-5400-20-12
Submitted by: Engineering and Operations Department – Engineering Division
Subject: Physical Parking Restriction Options for Bedwell Bay Road

Purpose / Introduction

To provide a summary of options to physically restrict new no parking areas on Bedwell Bay Road.

Recommended Resolutions

THAT plastic delineator posts be installed in the recently signed parking restriction areas along Bedwell Bay Road as recommended in the report dated June 13, 2019 from the Engineering and Operations Department – Engineering Division regarding Physical Parking Restriction Options for Bedwell Bay Road;

AND THAT the funding requirements of up to \$30,000 be forwarded to the Finance Committee for identification of a funding source.

Background

On September 25, 2018, Council reviewed a staff report regarding proposed parking restrictions on Bedwell Bay Road (**Attachment 1**) and passed the following resolution:

RC18/497

THAT the preliminary proposed parking restrictions along Bedwell Bay Road be implemented as recommended in the report dated September 14, 2018 from the Engineering and Operations Department – Engineering Division regarding Proposed Parking Restrictions on Bedwell Bay Road.

The parking restrictions were designed to address traffic safety and traffic management concerns. In spring 2019, signs outlining the new parking restrictions were installed.

Since installation of the new parking signs, there have been ongoing violations of the parking signs. Bylaw Enforcement ticketing has been under way; however, drivers continue to ignore the new parking restrictions during busy park use days. This report outlines physical deterrents to parking that can be installed to improve compliance and reduce the amount of Bylaw Enforcement effort required.

Considered at June 25, 2019 Regular Council Meeting

RC - Agenda - 2019 06 25

Item 9.6

Report/Recommendation to Council

Physical Parking Restriction Options for Bedwell Bay Road

June 13, 2019

Discussion

Since the signs have been installed, Bylaw staff have conducted parking enforcement during busy park use days (typically warm, sunny days on or near weekends). Over eight days between May 10 and June 5, 2019, 99 tickets were issued for parking compliance issues.

Staff observed during a weekend site visit that, particularly in the westbound direction, many drivers chose to ignore the new no-parking signs with rows of cars parked illegally together. In the eastbound direction, some pick-up/drop-off activities with drivers with hazard lights were observed near a floating bridge trailhead.

In addition to enforcement through ticketing, physical measures can restrict or eliminate the ability for vehicles to park in no-parking zones. Two options are outlined below. Under both options, it is recommended that all new no-parking areas receive the physical barrier treatment totalling approximately 800m in length.

Option 1: Concrete Roadside Barriers

Concrete roadside barriers (CRBs) provide a durable and resilient barrier to vehicles. In the context of Bedwell Bay Road, which has ditches and slopes on either side, CRBs may also provide safety improvement in the case of errant vehicles.

For this purpose, low CRBs (450mm high) are recommended. An example barrier is shown in Figure 1.

Figure 1: Sample Low Concrete Roadside Barrier (450mm)



The installation of approximately 800m of low CRB including bullnose transitions and signage is expected to cost up \$70,000. It is anticipated that these new barriers would have minimal to no maintenance cost impacts.

Considered at June 25, 2019 Regular Council Meeting

RC - Agenda - 2019 06 25

Item 9.6

Report/Recommendation to Council

Physical Parking Restriction Options for Bedwell Bay Road

June 13, 2019

Option 2: Plastic Delineator Posts

Plastic delineator posts provide a visible deterrent to vehicles and can be purchased with designs that allow the posts to automatically re-right should they be struck or driven over by a vehicle. An example row of plastic delineator posts is shown in Figure 2.

Figure 2: Sample Plastic Delineator Posts



It is recommended that delineator posts be installed at 3m spacing to prevent vehicles from parking between them. The installation of approximately 800m plastic delineator posts at 3m spacing (around 270 posts) is expected to cost up to \$30,000. Over time, plastic delineator posts can be worn, damaged, or removed by errant vehicles, road maintenance activities, and other factors; thus, it is anticipated that occasional replacement of the posts will be required.

The installation of concrete roadside barriers provides the most permanent, resilient, and low maintenance improvement but at a significant cost. Staff recommend that Option 2, plastic delineator posts, be installed along the new no-parking areas on Bedwell Bay Road to further deter illegal parking and help reduce enforcement efforts in the area.

Alternatively, as driver behaviour may change over time with continued enforcement, staff can continue enforcement efforts through the summer of 2019 and report back to Council with a recommendation for further action if compliance does not improve.

Considered at June 25, 2019 Regular Council Meeting

RC - Agenda - 2019 06 25

Item 9.6

Report/Recommendation to Council

Physical Parking Restriction Options for Bedwell Bay Road

June 13, 2019

Other Options

1. THAT low concrete roadside barriers be installed in the recently signed parking restriction areas along Bedwell Bay Road as recommended in the report dated June 13, 2019 from the Engineering and Operations Department – Engineering Division regarding Physical Parking Restriction Options for Bedwell Bay Road.
2. THAT staff continue Bylaw Enforcement efforts and monitor parking activity along Bedwell Bay Road for the summer of 2019 and report back if compliance issues continue.
3. THAT the report dated June 13, 2019 regarding Physical Parking Restriction Options for Bedwell Bay Road from the Engineering and Operations Department – Engineering Division be received for information.

Financial Implications

The installation of recommended Option 2, plastic delineator posts, is expected to cost up to \$30,000. Over time, plastic delineator posts can be worn, damaged, or removed by errant vehicles, road maintenance activities, and other factors; thus, it is anticipated that occasional replacement of the posts will be required.

Communications / Civic Engagement

No public communications are planned as part of this initiative.

Council Strategic Plan Objectives

This initiative supports the 2019-2022 Council Strategic Plan priority of Community Evolution by providing people with a variety of options to move through and around Port Moody safely and efficiently.

Attachment:

1. Report dated September 14, 2018 from the Engineering and Operations Department – Engineering Division regarding Proposed Parking Restrictions on Bedwell Bay Road.

Considered at June 25, 2019 Regular Council Meeting


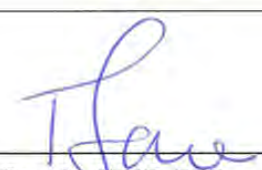


RC - Agenda - 2019 06 25

Item 9.6

Report/Recommendation to Council

Physical Parking Restriction Options for Bedwell Bay Road

June 13, 2019

Prepared by:	
 _____ Jeff Moi, P.Eng., PMP General Manager of Engineering and Operations	
Reviewed for Form and Content / Approved for Submission to Council:	
City Manager's Comments  _____ Tim Savoie, MCIP, RPP City Manager	
Corporate Review Finance and Technology (Financial Services, Information Services) Planning and Development (Building, Bylaw, and Licensing, Planning)	Initials  

Considered at June 25, 2019 Regular Council Meeting

RC - Agenda - 2019 06 25

Item 9.6

Attachment 1

Considered at September 25, 2018 Regular Council Meeting

Council Agenda Information

☒ Regular Council September 25, 2018

Item 9.13



City of Port Moody Report/Recommendation to Council

Date: September 14, 2018

File No. 11-5400-20-12

Submitted by: Engineering and Operations Department – Engineering Division

Subject: Proposed Parking Restrictions on Bedwell Bay Road

Purpose / Introduction

To provide information related to parking concerns along Bedwell Bay Road near Sasamat Lake and recommend installation of 'no parking zones' along Bedwell Bay Road to address safety and traffic management concerns.

Recommended Resolution

THAT the preliminary proposed parking restrictions along Bedwell Bay Road be implemented as recommended in the report dated September 14, 2018 from the Engineering and Operations Department – Engineering Division regarding Proposed Parking Restrictions on Bedwell Bay Road.

Background

At the May 24, 2011 Regular Council meeting a report (**Attachment 1**) was submitted to Council recommending the installation of 'no parking zones' along Bedwell Bay Road. At that time, Council defeated the recommendations of installing 'no parking zones' and passed the following resolution:

THAT staff consult with Metro Vancouver on potential locations within Metro Vancouver lands to increase off-street parking for White Pine Beach/Sasamat Lake.

On June 26, 2018, the Village of Belcarra issued a letter addressing the City of Port Moody Mayor and Council, the Port Moody Police, and Metro Vancouver Parks to express concern regarding the parking situation near Sasamat Lake and along Bedwell Bay Road (**Attachment 2**).

In response to the Village of Belcarra letter, staff have reviewed and updated the original 2011 'no parking zones' proposal for Bedwell Bay Road as outlined below.

Discussion

As outlined in **Attachment 1**, in 2011, the Port Moody Police Department (PMPD) identified parking related safety concerns along various sections of Bedwell Bay Road near Sasamat Lake. During the summer months, Sasamat Lake attracts many regional visitors who

Considered at June 25, 2019 Regular Council Meeting

RC - Agenda - 2019 06 25

Item 9.6

Attachment 1

Considered at September 25, 2018 Regular Council Meeting

RC - Agenda - 2018 09 25

Item 9.13

Report/Recommendation to Council

Proposed Parking Restrictions on Bedwell Bay Road

September 14, 2018

access the lake as well as its facilities via the White Pine Beach parking lots which is managed by Metro Vancouver. When the White Pine Beach parking lots reach capacity, Metro Vancouver staff close the park access to public parking while facilitating bus, emergency vehicle, and resident access as needed. When access to the parking lots are halted, visitors to Sasamat Lake park their vehicles along Bedwell Bay Road while accessing the lake at signed access points.

From discussions with Metro Vancouver staff, City staff understand that some programming at Sasamat Lake is served by parking along Bedwell Bay Road. Activities such as fishing and swimming via the float bridge at the south end of the lake are more conveniently served by street parking.

Specific concerns have been noted by staff when vehicles park along Bedwell Bay Road that include:

- vehicles parked on the shoulder edge that protrude over the white edge line limiting sightlines and available travel portion of the roadway;
- vehicles parked on the shoulder of Bedwell Bay Road that force pedestrians to walk on the traveled portion of the roadway while carrying various large items for beach use;
- unmarked steep slopes adjacent to the road shoulder that can make access difficult and potentially unsafe. Activity in these areas can also increase erosion of steep slopes adjacent to the roadway; and
- vehicles searching for parking spaces that make frequent U-turns on Bedwell Bay Road.

The Village of Belcarra letter further identifies concerns around illegal or informal parking, pedestrian activity, and park related activity potentially conflicting with roadway travel and emergency access. In the letter, Belcarra requests restricting parking to only one side of Bedwell Bay Road, the addition of parking signage, and regular enforcement.

In response to these concerns, staff had previously identified criteria as mentioned in the 2011 report for evaluating parking on Bedwell Bay Road. For this review, the criteria were updated as summarized below:

- provide adequate sight distances for vehicles travelling on the roadway at the posted speed limit;
- maximize the amount of on-street parking available for visitors;
- maintain safety for pedestrians and general traffic on the roadway; and
- provide minimum 2m wide paved or gravel shoulder measured from the painted edge line.

The above criteria allow vehicles to park along the roadway on a reasonably level area while providing more space in the roadway to accommodate through traffic and pedestrian movements. This would increase safety for general traffic as well as pedestrians accessing Sasamat Lake.

Considered at June 25, 2019 Regular Council Meeting

RC - Agenda - 2019 06 25

Item 9.6

Attachment 1

Considered at September 25, 2018 Regular Council Meeting

RC - Agenda - 2018 09 25

Item 9.13

Report/Recommendation to Council

Proposed Parking Restrictions on Bedwell Bay Road

September 14, 2018

There are currently approximately 380 on-street parking stalls available along Bedwell Bay Road. A preliminary site review was conducted in September 2018 that resulted in the identifications of locations along the roadway that do not meet the above criteria. Approximately 750m (equivalent to 120 parking stalls) of additional on-street parking have been identified to be marked as 'no parking zones'. As a result, a remainder of approximately 260 parking stalls will be available to visitors along Bedwell Bay Road. A detailed site review is required to confirm the exact locations of these 'no parking zones' prior to implementation.

Maps are included as **Attachment 3** that document the preliminary proposed plans for implementing the 'no parking zones' along Bedwell Bay Road. The proposed 'no parking zones' will be identified in the field with "No Parking" signs installed along the edge of Bedwell Bay Road. If approved, staff will proceed with a detailed site visit to determine the exact locations of sign installation prior to implementing the parking changes.

Other Options

1. THAT staff be directed to consult with Metro Vancouver to consider potential locations within existing Metro Vancouver lands to increase availability of off-street parking.
2. THAT no changes to parking along Bedwell Bay Road be made.
3. THAT alternative direction be provided to staff.

Financial Implications

This project will require the installation of several signs and posts, as well as a detailed site visit to determine the exact locations of the 'no parking zones'. It is anticipated that the total costs for installation will be under \$7,000. The anticipated total costs for the detailed site visit will be under \$3,000. In total, \$10,000 should be budgeted for this initiative.

If this initiative is approved, staff will include the above costs in the proposed 2019 to 2022 capital plan.

Communications / Civic Engagement

No public consultation on the proposed plan has been undertaken to date. If this initiative is approved, staff will notify the Village of Belcarra and Metro Vancouver of the timing of the changes.

Council Strategic Plan Objectives

This project is consistent with the 2015-2018 Council Strategic Plan through responsive transportation plans and service excellence.

Attachments:

1. Council Report Regarding Proposed Parking Restriction Changes on Bedwell Bay Road, dated May 17, 2011.
2. Letter from Village of Belcarra.
3. Maps of Preliminary Proposed No Parking Zones.

Considered at June 25, 2019 Regular Council Meeting

RC - Agenda - 2019 06 25

Item 9.6

Attachment 1

Considered at September 25, 2018 Regular Council Meeting

RC - Agenda - 2018 09 25

Item 9.13

Report/Recommendation to Council

Proposed Parking Restrictions on Bedwell Bay Road

September 14, 2018

Prepared by:	Reviewed by:
 Ava Li, EIT Traffic Engineer (Consultant) R.F. Binnie & Associates Ltd.	 Stephen Judd, P.Eng. Manager of Infrastructure Engineering Services  Jeff Moi, P.Eng., PMP General Manager of Engineering and Operations
Reviewed for Form and Content / Approved for Submission to Council:	
City Manager's Comments  Tim Savoie, MCIP, RPP City Manager	
Corporate Review Environment and Parks Finance and Technology (Financial Services, Information Services) Police	Initials   

Considered at June 25, 2019 Regular Council Meeting

RC - Agenda - 2019 06 25

Item 9.6

Attachment 1

Considered at September 25, 2018 Regular Council Meeting

RC - Agenda - 2018 09 25

Item 9.13

Attachment 1



CITY OF PORT MOODY

REPORT/RECOMMENDATION TO COUNCIL

DATE: May 17, 2011

File No. 5400-20-12

SUBMITTED BY: Development Services - Engineering

SUBJECT: Proposed Parking Restriction Changes on Bedwell Bay Road

PURPOSE:

To provide information related to parking concerns along Bedwell Bay Road near Sasamat Lake and request authorization for installation of 'no parking zones' along Bedwell Bay Road

BACKGROUND:

In the summer of 2010, the Port Moody Police Department (PMPD) identified parking related safety concerns along sections of Bedwell Bay Road near Sasamat Lake. During the summer months, Sasamat Lake attracts a number of regional visitors who access the lake/facilities via the White Pine Beach parking lots. When the GVRD White Pine Beach Parking lots reach capacity, GVRD staff close the park access to public parking (facilitating bus, emergency vehicle and resident access as needed). When the parking lots are full, visitors to Sasamat Lake park their vehicles along Bedwell Bay Road to enter signed access points to the lake.

When vehicles park along Bedwell Bay Road the following specific concerns have been noted by the PMPD and staff:

- Vehicles parked on the shoulder edge and protrude over the white edge line and limit sightlines and the available travel portion of the roadway;
- Vehicles parked on the shoulder of Bedwell Bay Road force pedestrians to walk on the travel portion of the roadway;
- Unmarked steep slopes adjacent to the road shoulder make access difficult and unsafe. Activity in these areas can also increase erosion of steep slopes adjacent to the roadway; and
- Vehicles searching for parking spaces make frequent u-turns on Bedwell Bay Road.

In response to these concerns staff have developed criteria for determining where parking could be permitted on Bedwell Bay Road based on typical engineering practices

Considered at June 25, 2019 Regular Council Meeting

RC - Agenda - 2019 06 25

Item 9.6

Attachment 1

Considered at September 25, 2018 Regular Council Meeting

RC - Agenda - 2018 09 25

Item 9.13

Attachment 1

Proposed Parking Restriction Changes on Bedwell Bay Road
May 17, 2011

Page 2

and site reviews. Parking adjacent to Bedwell Bay Road should meet the following criteria:

- Minimum two metre wide paved or gravel shoulder measured from the painted edge line; and
- At least 3.5m of total width of flat area available from the painted edge line to the start of any slope.

These criteria allow vehicles to park along the roadway on a reasonably level area while permitting pedestrian access passed parked vehicles.

A detailed site review resulted in the identification of locations along the roadway that do not meet the above criteria. In total, approximately 1600m (equivalent to 240 parking stalls) of road shoulder have been identified to be marked as 'no parking zones'. Approximately 675m (equivalent to 140 parking stalls) of shoulder meets the criteria and can be utilized for parking. The attached map outlines the proposed 'no parking zones'.

The proposed 'no parking zones' will be identified in the field with "No Parking" signs installed along the edge Bedwell Bay Road. If authorized, staff will proceed with installation in June 2011, to ensure the restrictions are in effect for the summer months.

Staff expect that the parking restrictions will have an impact on visitors to Sasamat Lake. City Bylaw Enforcement Officers and PMPD will coordinate education and enforcement efforts of the new parking restrictions over the summer of 2011. Engineering staff will liaise with these groups to determine the effect of the proposed restrictions and may proceed with further changes as needed.

COMMUNICATIONS:

Staff worked in coordination with Port Moody Police to develop the proposed plan. In addition staff discussed the parking problem with the Village of Belcarra staff and potential changes to parking restrictions along Bedwell Bay Road. Belcarra staff expressed concern with implementation of parking restrictions resulting in increased parking in their jurisdiction.

As this is primarily a traffic safety initiative, no public consultation on the proposed plan has been undertaken to date.

Considered at June 25, 2019 Regular Council Meeting

RC - Agenda - 2019 06 25

Item 9.6

Attachment 1

Considered at September 25, 2018 Regular Council Meeting

RC - Agenda - 2018 09 25

Item 9.13

Attachment 1

Proposed Parking Restriction Changes on Bedwell Bay Road
May 17, 2011

Page 3

BUDGETARY IMPACT:

This initiative will require the installation of several signs and posts. It is anticipated that the total costs for installation will be less than \$4000 which would be funded from existing Traffic Safety Improvements budget.

COUNCIL STRATEGIC PLAN OBJECTIVES:

This project is consistent with the 2009 Council Strategic Plan by improving livability through increased traffic safety and will improve residents' ability to travel effectively around the community.

POLICY IMPLICATIONS:

None.

ALTERNATIVES:

- That staff consult with Metro Vancouver to consider potential locations within existing Metro Vancouver lands to increase availability of off-street parking.
- That no changes to parking along Bedwell Bay Road be made.
- That Council provide alternative direction to staff.

RECOMMENDATION:

THAT Council authorize the installation of 'no parking zones' along Bedwell Bay Road as per the report dated May 17, 2011 from Development Services-Engineering.

Prepared By: Mark Halpin

Approved for Submission to Council

Mark Halpin
Transportation Engineering Technologist

Gaëtan Royer
City Manager

Considered at June 25, 2019 Regular Council Meeting

RC - Agenda - 2019 06 25

Item 9.6

Attachment 1

Considered at September 25, 2018 Regular Council Meeting

RC - Agenda - 2018 09 25

Item 9.13

Attachment 1

Proposed Parking Restriction Changes on Bedwell Bay Road
May 17, 2011

Page 4

APPROVALS	
Supervisor Cory Day, P. Eng., City Engineer	Dept. Head Tim Savoie, MCIP, Director, Development Services

CORPORATE REVIEW		COMMITTEE REVIEW
		(List Relevant Committees)
	(Initials)	
Administration/ Legislative Services/ Mayor's Office		
Communications/Finance/ Human Resources/IT		
Culture/Environment/Facilities/Parks/Recreation		
Engineering/Operations		
Fire & Rescue		
Library		
Planning & Development/Building, Bylaw & Licensing		
Police		

COUNCIL AGENDA INFORMATION		
Regular Council Meeting	Date:	Item #[]

Considered at June 25, 2019 Regular Council Meeting

RC - Agenda - 2019 06 25

Item 9.6

Attachment 1

Considered at September 25, 2018 Regular Council Meeting

RC - Agenda - 2018 09 25

Item 9.13

Attachment 2



VILLAGE OF BELCARRA

"Between Forest and Sea"

4084 BEDWELL BAY ROAD, BELCARRA, B.C. V3H 4P8
TELEPHONE 604-937-4100 FAX 604-939-5034
belcarra@belcarra.ca • www.belcarra.ca



July 26, 2018

Mayor & Council
City of Port Moody
100 Newport Drive
Port Moody, BC, V3H 5C3

Steve Schaffrick
Division Manager, Regional Area
Metro Vancouver Parks
Metrotower III, 4730 Kingsway
Burnaby, BC, V5H 0C6

David Fleugel
Chief Constable
Port Moody Police
3051 St. Johns Street
Port Moody, BC, V3H 2C4

Re: A Dangerous Parking Situation on Bedwell Bay Road by Sasamat Lake

This is to advise that at a meeting of Belcarra Council held July 23rd, 2018, the following motion was passed:

"That a letter be written to the City of Port Moody Mayor and Council, the Port Moody Police, and Metro Vancouver Parks with a copy to the RCMP to express concern regarding the parking situation on the West side of Sasamat Lake on both sides of Bedwell Bay Road."

Members of Belcarra Council, staff and residents have expressed concern over the haphazard and illegal parking that continues to take place along Bedwell Bay Road on the West side of Sasamat Lake. The behavior of visitors parking along this stretch of road is unacceptable and dangerous. When people exit their vehicles, vehicle doors often remain open while water-craft paraphernalia is removed. Pedestrians then leisurely stroll onto and across Bedwell Bay Road which creates an extremely dangerous situation for both the pedestrians and for general vehicle traffic.

It is recommended that parking be allowed only on one side of Bedwell Bay Road in order to ensure that both emergency vehicles and general vehicular traffic have sufficient space to safely proceed through that area.

We also request that sufficient signage be posted that is visible to vehicles, pedestrians and cyclists, and that this area be patrolled on a regular basis to ensure only legal and orderly parking.

Your immediate attention to this difficult and dangerous situation would be appreciated.

Sincerely,

Ralph Drew
Mayor

cc: Corporal Neil Roemer, RCMP, Coquitlam Detachment

Considered at June 25, 2019 Regular Council Meeting

RC - Agenda - 2019 06 25

Item 9.6

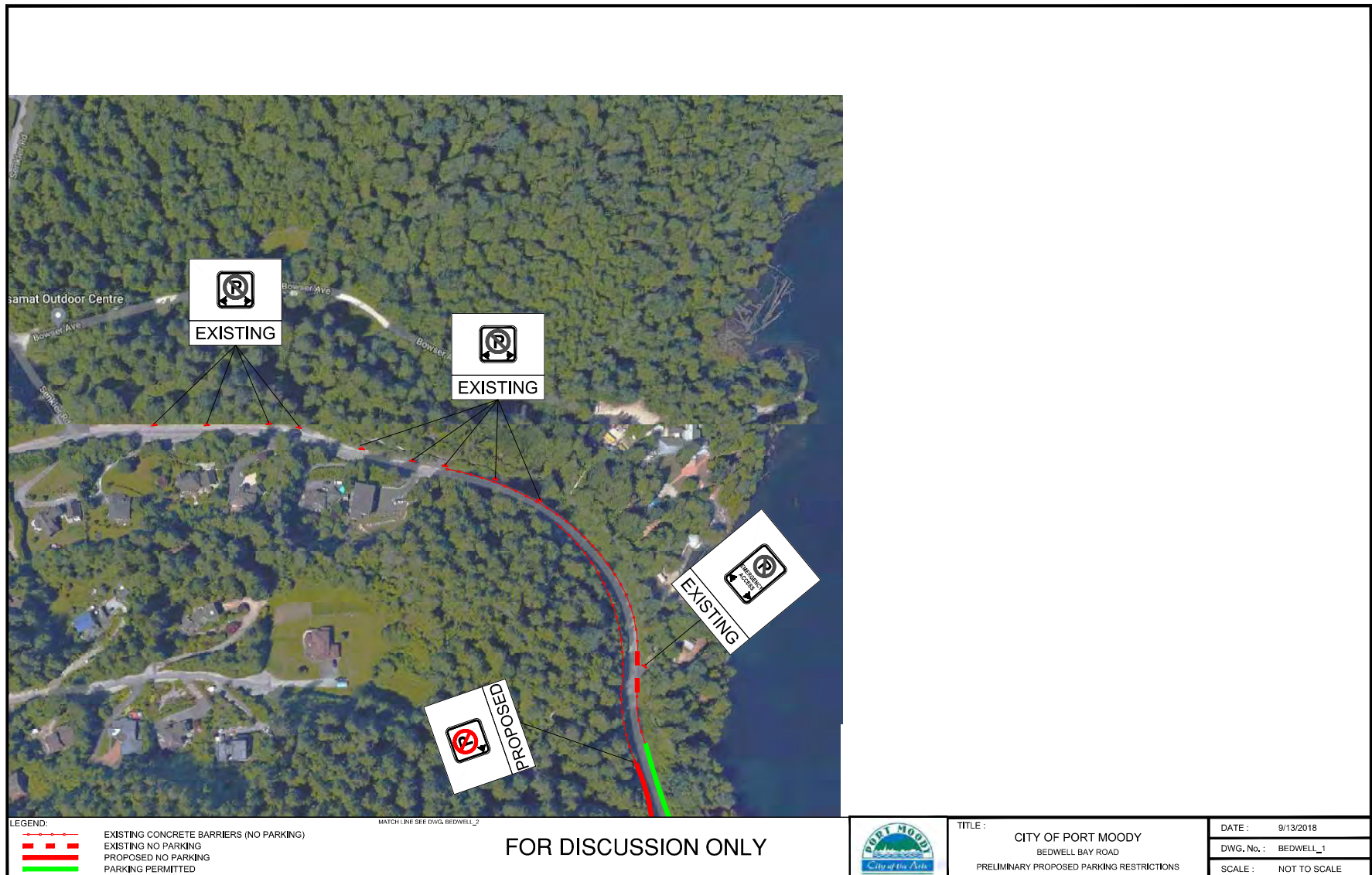
Attachment 1

Considered at September 25, 2018 Regular Council Meeting

RC - Agenda - 2018 09 25

Item 9.13

Attachment 3



Considered at June 25, 2019 Regular Council Meeting

RC - Agenda - 2019 06 25

Item 9.6

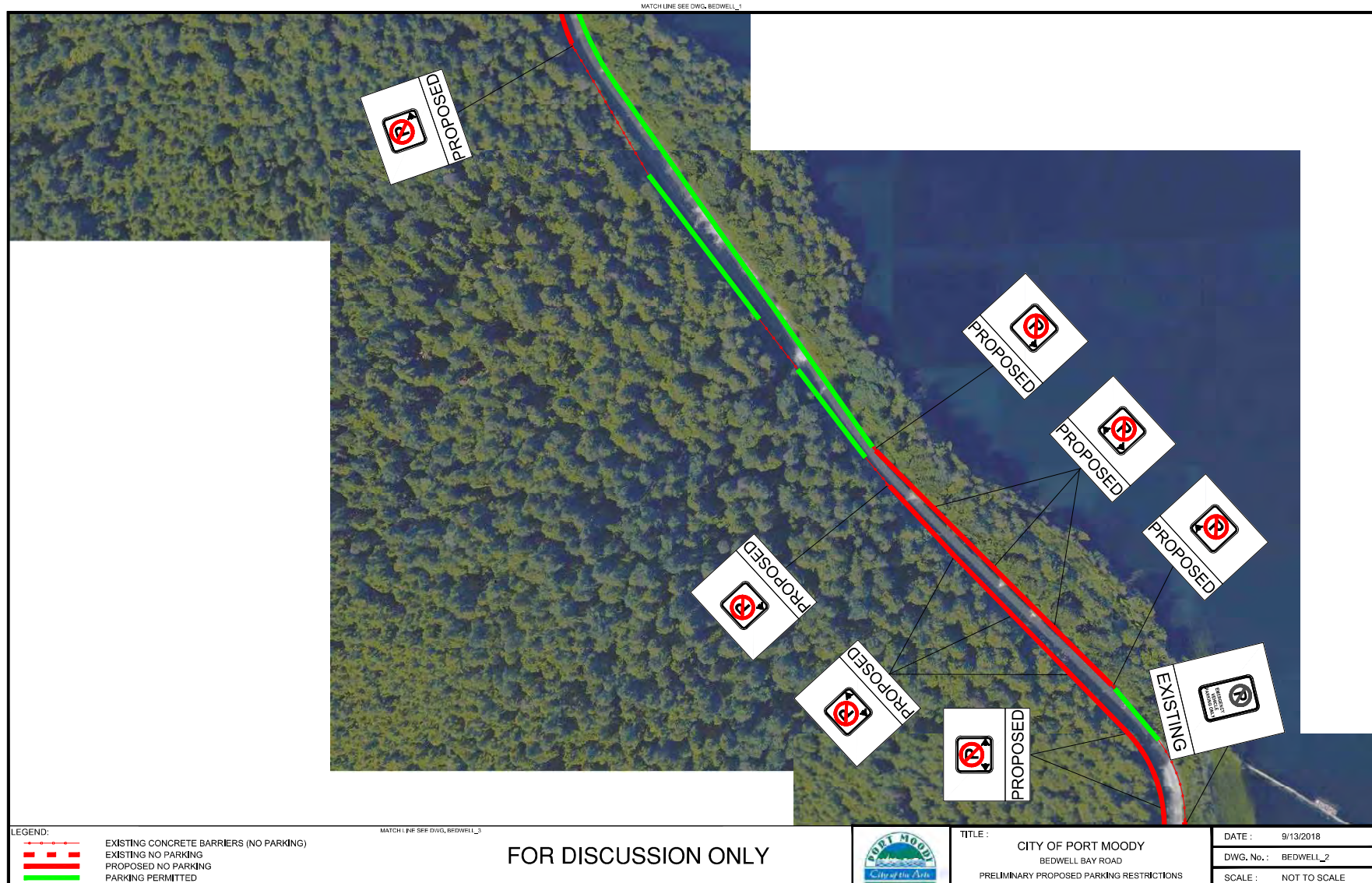
Attachment 1

Considered at September 25, 2018 Regular Council Meeting

RC - Agenda - 2018 09 25

Item 9.13

Attachment 3



Considered at June 25, 2019 Regular Council Meeting

RC - Agenda - 2019 06 25

Item 9.6

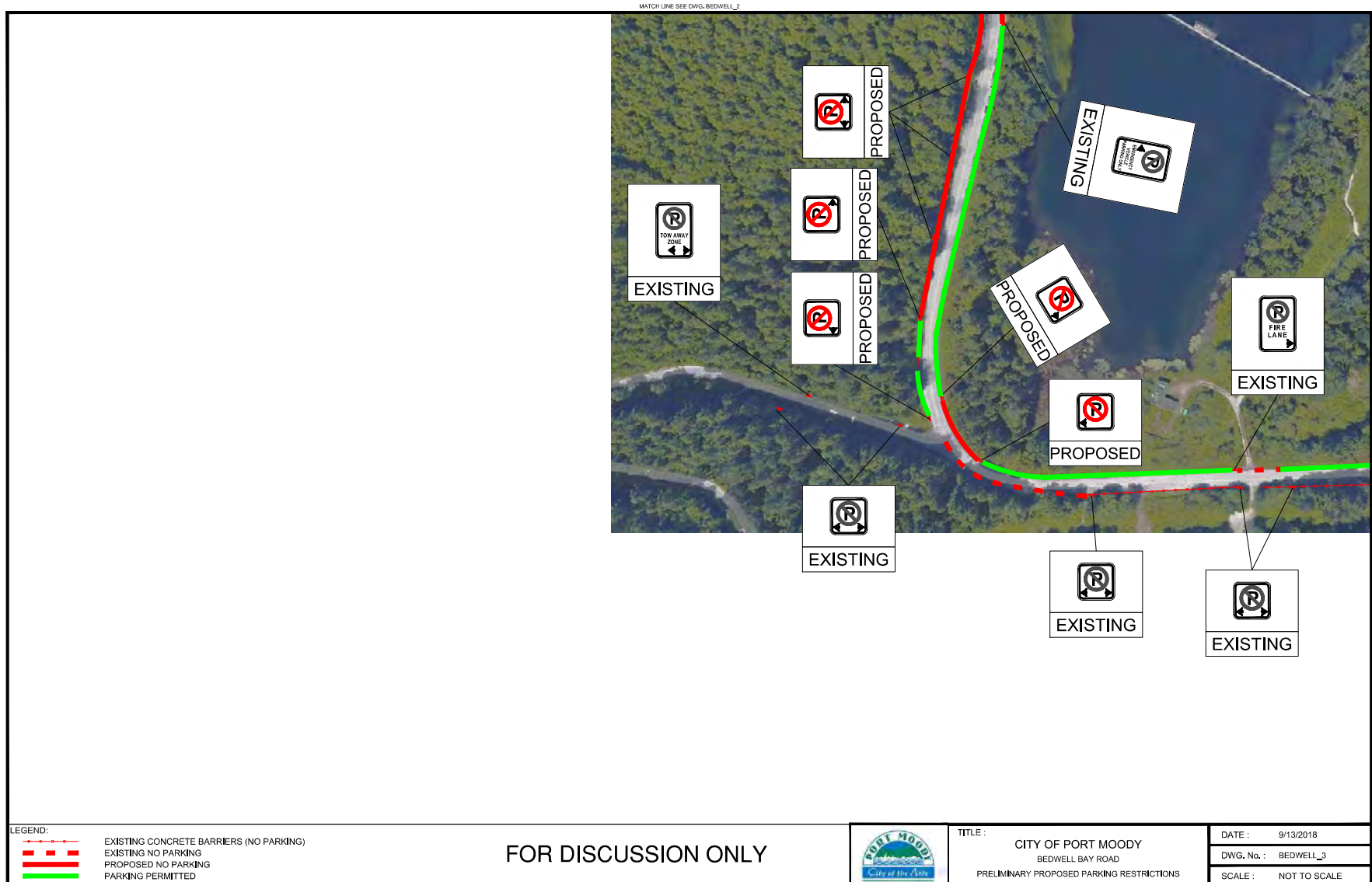
Attachment 1

Considered at September 25, 2018 Regular Council Meeting

RC - Agenda - 2018 09 25

Item 9.13

Attachment 3



Considered at June 25, 2019 Regular Council Meeting

RC - Agenda - 2019 06 25

Item 9.6

Attachment 1

Considered at September 25, 2018 Regular Council Meeting

RC - Agenda - 2018 09 25

Item 9.13

Attachment 3

