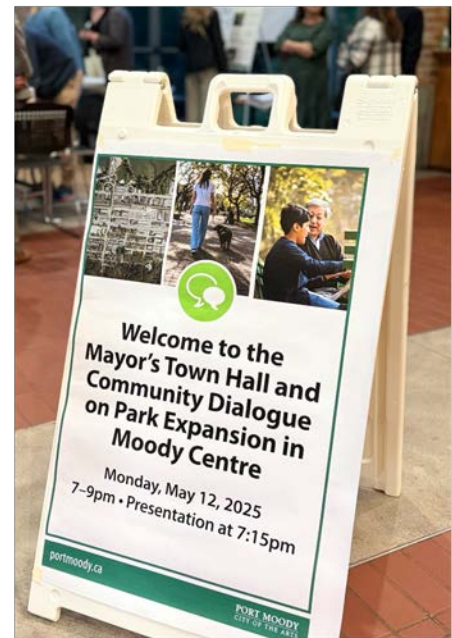


City of Port Moody

# Mayor's Town Hall and Community Dialogue on Park Expansion in Moody Centre

## Engagement Summary



Mayor's Town Hall & Community Dialogue on Park Expansion in Moody Centre:  
Engagement Summary | *Spring 2025*



*Prepared by MODUS Planning, Design & Engagement, Inc. on behalf of the City of Port Moody.*

## Engagement Snapshot

The City of Port Moody has developed a parkland strategy to guide long-term planning for parkland throughout Port Moody over the next 30 years. To support finalization and implementation of the parkland strategy, the City hosted a Town Hall and Community Dialogues on May 12<sup>th</sup> from 7-9pm. The purpose of this event was to explore the goals laid out in the strategy and consider specific conditions and needs for Moody Centre. Input received from attendees was considered as staff refined the Draft Parkland Strategy, and it will be considered during the Strategy's implementation. Participants' input is also being considered as we make updates to the Official Community Plan (OCP), Port Moody's long-term vision for the future.

49

People attended the Town Hall and Community Dialogues

WHAT WE HEARD: TOWN HALL	WHAT WE HEARD: COMMUNITY DIALOGUES
78 submitted questions were submitted during the Q&A. The types of questions we heard included:	The following themes emerged across all engagement activities:
 <b>Planning Approach:</b> Questions related to the City's planning approach, including how parkland needs are calculated and plans for specific sites	<b>Natural Areas and Features:</b> An appreciation for the beautiful natural areas and trails as well as desire to protect and expand them 
 <b>Rocky Point Park:</b> Questions and suggestions related to expansion and improvement of Rocky Point Park	<b>Walking and Cycling Trails:</b> Suggestions to build a more interconnected and natural walking and cycling network in Moody Centre 
 <b>Partnerships:</b> Questions regarding how the City pursues partnerships with other levels of government and other key interest-holders to deliver parkland and park services	<b>Opportunities for Play:</b> A desire for more children's play areas and opportunities for play throughout Moody Centre 
 <b>Acquisitions:</b> Questions about how much budget and funding the City has for parkland acquisitions	<b>Park Expansion:</b> Calls to expand parks throughout Moody Centre, including Rocky Point Park 
	<b>Overcrowding:</b> Concerns that many parks in Moody Centre feel overcrowded. 

Mayor's Town Hall & Community Dialogue on Park Expansion in Moody Centre:  
Engagement Summary | *Spring 2025*

## Table of Contents

<b>Engagement Snapshot.....</b>	<b>iii</b>
<b>Table of Contents .....</b>	<b>1</b>
<b>Introduction.....</b>	<b>1</b>
Event Overview.....	1
<b>Public Engagement .....</b>	<b>2</b>
What We Did .....	2
What We Heard .....	3
<b>Next Steps .....</b>	<b>13</b>
<b>Appendix .....</b>	<b>15</b>

## Introduction

### Event Overview



**Mayor's Town Hall and  
Community Dialogue on  
Park Expansion in Moody Centre**

**May 12, 2025 • 7–9pm  
Presentation at 7:15pm  
Port Moody Civic Centre  
100 Newport Drive**

**portmoody.ca**

**PORT MOODY**  
CITY OF THE ARTS

The City of Port Moody is developing a parkland strategy to guide long-term planning for parkland throughout Port Moody over the next 25 years. It will provide a framework for decision-making and prioritization of investment in existing and new parkland such as parks, greenways, natural areas, and public open spaces.

To better understand parkland needs for Moody Centre and support implementation of the parkland strategy, the City hosted a Town Hall and Community Dialogue to explore strategy goals for the specific conditions and needs for Moody Centre. The event took place on May 12<sup>th</sup>, 2025 from 7-9 PM. The Town Hall provided participants with opportunities to learn more about the strategy through a presentation from staff and ask questions. The Community Dialogue encouraged participants to share their thoughts and experiences through different activity stations and connect directly with staff and Council.

#### The Purpose of Public Engagement

The City typically conducts public engagement processes for significant policies or projects that have considerable impact on the public, and where there is an opportunity for the public to inform or influence the decision; and when there is a legislative requirement to seek input from the public.

Public engagement seeks to give those who are interested/affected a chance to ask questions, gain knowledge and deepen their understanding of a topic, and share relevant values-based information and lived experience. We strive to provide meaningful, inclusive experiences for those who choose to participate.

Mayor's Town Hall & Community Dialogue on Park Expansion in Moody Centre:  
Engagement Summary | *Spring 2025*

### How We Use Participants' Input

Community input collected from participants is considered by City staff when making recommendations and developing draft plans and strategies, and by Council during their decision-making process. Community input is one factor of many. A variety of other factors must also be considered and include technical information, advice provided by subject matter experts, available budget, strategic goals, and other plans or strategy documents.

While public engagement results provide the City with valuable information, please note the views expressed do not necessarily reflect the views of all Port Moody residents. Public engagement is not intended to be a vote, and the results are not intended to be statistically representative of the whole community.

## Public Engagement

### What We Did

On May 12, 2025, the Mayor hosted a town hall and community dialogue at Port Moody City Hall to discuss parkland expansion in Moody Centre. The event was promoted through:

- Media release/web news story published at [portmoody.ca](https://portmoody.ca)
- Social media channels (Facebook, X, Instagram)
- Website homepage (feature box)
- Event calendar listing ([portmoody.ca](https://portmoody.ca))
- Galleria tv monitor (promotional slide)
- Pattison digital billboards
- Newport Digital Sign
- Direct email to Moody Centre businesses/landowners

The event began with a presentation in the Inlet Theatre, followed by a Q & A session. Attendees were invited to pose questions to City staff, then move into the Galleria for roundtable discussions. Mayor and Council were present to listen to the dialogue.

Approximately 49 people were present during the presentation and Q & A session. We received 78 questions from participants. All questions and answers have been posted to [portmoody.ca/parks](https://portmoody.ca/parks). In the Galleria, there were four stations with a variety of ways to provide feedback. Roundtable discussions were focused on the following four topics as they relate specifically to Moody Centre:

- adapting to changes (e.g. climate change, population growth);
- what is working well in existing parks and open spaces;
- ideas and examples that could help inform parks planning; and
- delivering parkland services (including acquisition, partnerships, phasing, and innovation).

## What We Heard

The following section summarizes what we heard at the Town Hall Q&A and each station of the community dialogues. Per the public engagement best practices that inform the City's Public Engagement Policy, comments have been analyzed and the common themes are included in this public engagement summary to provide key insights. Complete verbatim responses have been anonymized and shared directly with Council to provide decision-makers with the full range of input collected.

### Town Hall Q&A

To start the Town Hall, staff provided an overview of the Parkland Strategy process and presented the draft recommendations within the Strategy for Moody Centre. Attendees were then provided an opportunity to ask questions via the [sli.do](https://sli.do) platform or written on note paper. The types of questions we heard during the Town Hall Q&A included questions related to:

- Planning Approach to Parks
- Expanding and Improving Rocky Point Park
- Partnerships
- Parkland Acquisitions

All questions and answers have been posted to [portmoody.ca/parks](https://portmoody.ca/parks).

## Community Dialogue Activities

### Adapting to Change

**MAYOR'S TOWN HALL AND COMMUNITY DIALOGUE ON PARK EXPANSION IN MOODY CENTRE**

**Adapting to Change**

**Key Trends**  
Communities everywhere are adapting to changes – from climate change and population growth, to shifts in how we live, work, and connect. These global forces of change will shape the way we plan and consider the valuable role of parks in Moody Centre.

**climate**  
Climate change is reshaping how we design, plan, and experience parks in growing urban areas like Moody Centre. Rising temperatures, more intense storms, and changing rainfall patterns affect both ecosystems and park experiences.  
In Moody Centre, parks and greenspaces can help manage flooding, provide shade, support biodiversity, and offer year-round comfort for the community.

**population & demographics**  
Port Moody's population is expected to reach 71,800 by 2050, with growth in Moody Centre, Glenayre, Seaview, College Park, Harbour Heights, and Coronation Park. Seniors (65+) will make up a larger share of the city's expected population.  
Increased housing density and diverse housing forms will lead to a decrease in private outdoor spaces like backyards and different patterns of park use.

**lifestyle and societal shifts**  
As lifestyles evolve, parks are becoming essential for wellness, recreation, and socializing. Technology is changing how people find and use parks through apps and digital tools to discover and navigate spaces. Apartment living, remote work and flexible schedules increase demand for nearby green space and lead to more spread-out park use throughout the day and week.

Prepared by MOODY on behalf of the City of Port Moody

**PORT MOODY**  
CITY OF THE ARTS

*Participants were asked to reflect on global forces of change (climate, population & demographics, lifestyle & societal shifts) and respond to a series of questions including:*

- *How are these key trends affecting your use of parks and amenities in Moody Centre?*
- *Are you using the park in different ways, at different times?*



Mayor's Town Hall & Community Dialogue on Park Expansion in Moody Centre:  
Engagement Summary | Spring 2025

When we asked how key trends (e.g. climate change, population growth, demographic changes) are affecting participants' use of parks and amenities in Moody Centre, the following key themes emerged in response to each question:

**How are these key trends affecting your use of parks and amenities in Moody Centre? (n=15)**

- **Natural areas and trees (8):** residents noted a desire to retain and expand natural spaces within parks to support wellness activities and time in nature. Residents also noted a desire for more trees within parks.
- **Parks are feeling busier (5):** residents noted both the impact of growth and Port Moody becoming a destination for non-residents as potential factors.

Input also includes the following **individual comments (2)**: Demographic shifts leading to changes in the ways residents interact with parks. A desire for spaces that provide a mixture of green spaces and amenities.

**Are you using the park in different ways, at different times? (n=4)**

- **Climate change and weather (4):** residents noted the impact of hotter summers and expressed a desire for more vegetation within parks to provide shade and combat climate change. Residents also noted decreased use of park spaces due to wet weather in the winter.

**Other General Comments**

- **High-rise residential towers (5):** residents noted concerns regarding potential impacts of the development of high-rise residential towers, particularly along the shoreline.



Comments at this station were captured through a graphic recording, shown on the following page.



# ADAPTING to CHANGE

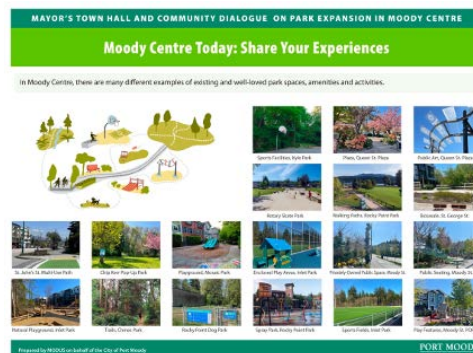


Mayor's Town Hall & Community Dialogue on Park Expansion in Moody Centre:  
Engagement Summary | Spring 2025

## Moody Centre Today: Share Your Experiences

Participants were invited to consider the different examples of existing and well-loved park spaces, amenities and activities in Moody Centre and respond to questions including:

- What type of park spaces and features do you enjoy in Moody Centre? What do you like about them?
- How do you usually get to parks in Moody Centre? What makes you choose that route, and what do you enjoy seeing or experiencing along the way?
- What would encourage you to go to Moody Centre parks more often and spend more time in them?



### What type of park spaces and features do you enjoy in Moody Centre? What do you like about them? (n=30)

- **Bike Paths and Walking Trails (8):** residents noted frequent use of walking trails and bike paths, with some comments noting a desire for improved trails within Chines Park and higher levels of connectivity between parks
- **Rocky Point Park / Waterfront Park Space (6):** residents noted enjoyment of Rocky Point Park, waterfront access and diversity of amenities
- **Variety of parks across Moody Centre (4):** residents noted enjoyment of the variety of parks within Moody Centre, with some comments noting a desire for smaller parks across the neighbourhood
- **Natural Areas and Trees (3):** residents noted enjoyment of trees, nature-based features, and trails through natural area parkland
- **Arts and Cultural Park Features (3):** enjoyment of particular park features, such as sculptures, and a desire for more features within Moody Centre parks were noted
- **Children's play spaces (3):** residents suggested additional play spaces for younger children

Input also includes the following **individual comments (3):** concerns regarding joint-use school sites, desire for additional park infrastructure, and zoning of the site next to Rocky Point Park.

### How do you usually get to parks in Moody Centre? What makes you choose that route, and what do you enjoy seeing or experiencing along the way? (n=11)

- **Walking (3)**
- **Driving (2)**
- **Combination of modes (2):** walking and cycling, and walking and driving were noted

Input also includes the following **individual comments (4):** cycling, transit, water transportation. Natural features were noted as an item enhancing enjoyment.



**What would encourage you to go to Moody Centre parks more often and spend more time in them (n=22)**

- **Park features and activations (9):** residents noted desires for a variety of additional features within Moody Centre parks, with some noting that many parks felt empty, an example that was provided of a well-activated space was the shipyard (CNV)
- **Trails and nature-based features (5):** residents noted a desire for additional trail connections, particularly along the waterfront, and a desire for additional nature-based features within parks
- **Additional park space (4):** residents noted a desire for more park spaces, with some noting a specific desire for the expansion of existing parks
- **Bike amenities and infrastructure (4):** A desire for additional bike amenities such as storage, was noted, in addition to a desire for additional connectivity through separated bike paths

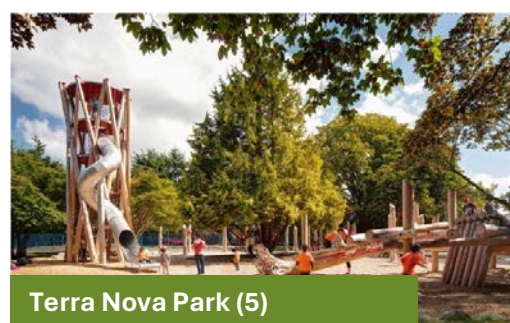
**Finding Inspiration Beyond Our City**

Participants were asked to select ideas of different park spaces, features and amenities that they would like to see reflected in Moody Centre's parks. They were then asked questions including:

- Are there any other examples of parks and park amenities that you would like to see in Moody Centre?
- Are there any examples that would not be a good fit for Moody Centre? Why not?
- What do you like most about these examples of parks and park amenities?

**Examples and inspiration images starting from the most preferred from this activity include:**

PREFERENCE  
FOR  
INSPIRATION  
IMAGES





Mayor's Town Hall & Community Dialogue on Park Expansion in Moody Centre:  
Engagement Summary | Spring 2025

PREFERENCE  
FOR  
INSPIRATION  
IMAGES



The High Line (4)



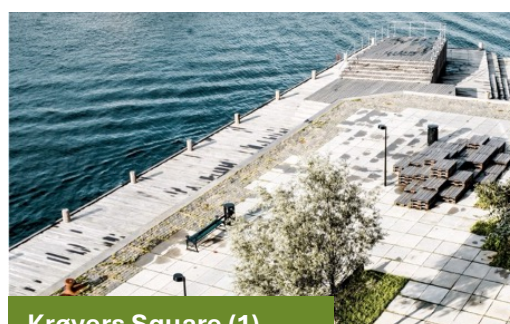
Garden Square (1)



Holland Street Upgrade (1)



Gehl Pilot Project (1)



Krøyers Square (1)



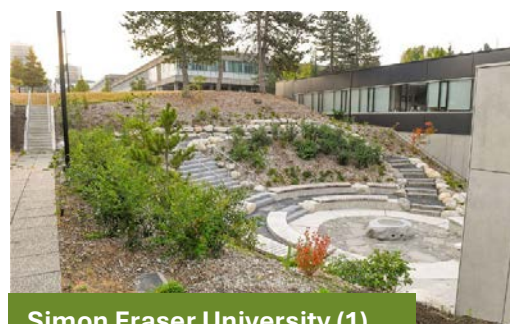
Southeast False Creek (1)



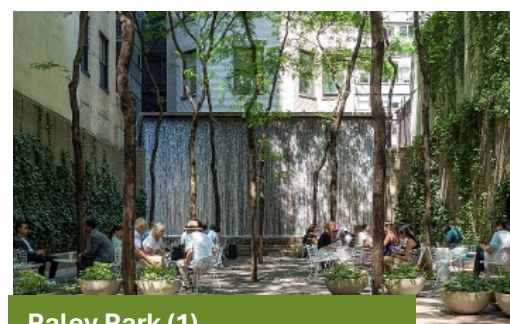
Zhengzhou Central Plaza (1)



River District (1)



Simon Fraser University (1)



Paley Park (1)

### What do you like most about these examples of parks and park amenities (n=11)

- **Natural areas and nature-based features (6):** residents noted enjoyment of examples that included natural areas and nature-based features such as trees, flowers, and a "living bridge" concept
- **Diversity of uses and amenities (2):** spaces that included a diverse range of uses and amenities were noted as desirable

Input also includes the following **individual comments (3)**: a creative use of space, spaces that support physical activity, and connections between parks and trails

### Are there any examples that would not be a good fit for Moody Centre? Why not? (n=17)

- **Lack of natural features (5):** residents noted desire to retain natural features within parks, and indicated that a lack of natural features would have a negative impact on park enjoyment
- **Small, non-functional park spaces (2):** residents noted concern regarding the design of small spaces and potential lack of functionality
- **Restrictions on park use (2):** residents noted concern regarding potential restrictions on park use, such as restricted hours for joint-use school sites

Input also includes the following **individual comments (5)**: lack of programming/activation, specific park features, concerns regarding park management, concerns regarding traffic, a desire for additional public education. There were **comments (3)** regarding concerns about the potential impact of residential towers developed within Moody Centre. However, these comments did not include mention of parkland.

### Are there any other examples of parks and park amenities that you would like to see in Moody Centre? (n=24)

- **Sports and wellness amenities (7):** residents noted a desire for additional amenities to support sports, and both physical and mental wellness
- **Natural areas and nature-based features (3):** a desire for features such as butterfly gardens, and access natural areas, particularly along riparian corridors was noted
- **More diverse amenities (3):** residents noted a desire for amenities to support use by a wider range of ages and abilities
- **Arts & culture amenities (2):** residents noted a desire for music-based amenities and heritage-based amenities within parks
- **Additional park infrastructure (2):** residents noted a desire for additional park infrastructure, such as seating and picnic tables
- **Pop-up parks (2):** residents noted support for pop-up parks to trial innovative ideas
- **Additional parkland (2):** residents noted a desire for additional parkland within Moody Centre

Input also includes the following **individual comments (3)**: community connections, stewardship, linear parks.

Mayor's Town Hall & Community Dialogue on Park Expansion in Moody Centre:  
Engagement Summary | Spring 2025

## Sustain-a-bucks

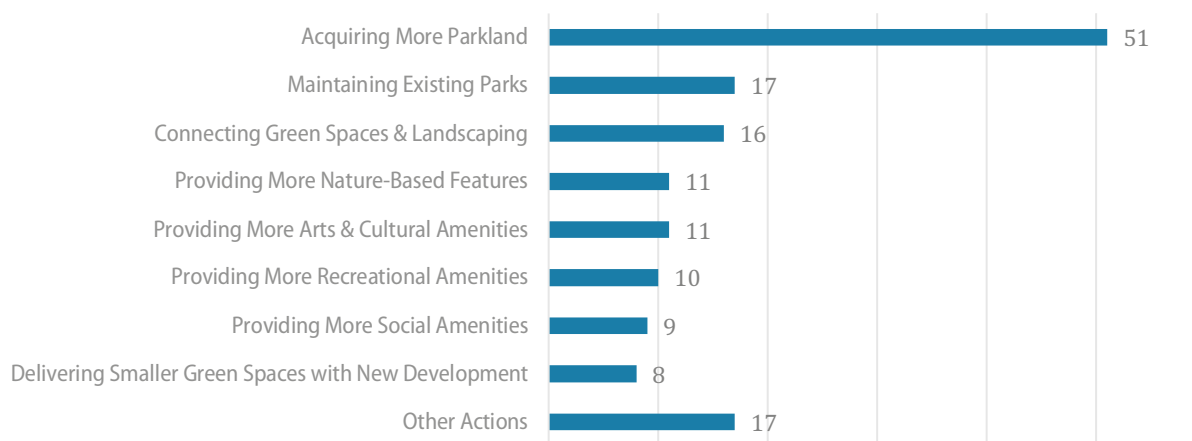
Participants were asked to imagine they were in charge of community spending for Moody Centre parkland.

Each participant was given 10 chips ('bucks') to distribute across different actions and strategies where they would want to see planning efforts focused. Participants were then asked to explain their rationale for what they prioritized.



## What are your top priorities for parks planning? (150 responses)

### Top Priorities and Actions



The top three priorities and actions chosen by participants were **Acquiring More Parkland (51)**, **Maintaining Existing Parks (17)** and **Connecting Green Spaces & Landscaping (16)**.

Additional comments were shared for the following actions and strategies:

### Acquiring More Parkland

- Rocky Point Park is at capacity in terms of features. Consider how other parks and green spaces could provide spaces for other types of activities, like frisbee and kites.
- Consider changes to further prioritize waterfront parks
- Mitigating climate change
- Protecting biodiversity
- Mental health benefits

**Providing More Nature-Based Features**

- Daylighting streams
- Focus on natural areas instead of “nature-based” features

**Connecting Green Spaces & Landscaping**

- More connected green spaces as an alternative to Rocky Point Park, as an alternative draw for visitors
- Increased accessibility through the Chines towards Coquitlam is needed
- More gardens

**Delivering Smaller Green Spaces with New Development**

- Avoid small green areas that count towards parkland but will not be used or used very little
- Small green spaces should also support recreational activities such as running, dog-walking and frisbee

**Providing More Social Amenities**

- Chessboards or other social gathering activities
- Neighbourhood, community and safety

In addition, **Other Actions** were identified, including:

- Activate Neighbourhood Parks
- Activated Alternatives
- Car Free Events
- The Shipyards in North Vancouver



## Feedback from Businesses & Landowners

Representatives of local businesses, developers, and landowners were invited to share their feedback through dialogue at a separate station responding to the following questions:

- What types of nearby park spaces, uses and features support your business? Which pose challenges, based on their design or location?
- How can public park spaces and public-private partnerships create value from your perspective?
- What would make partnership worthwhile for you?
- What challenges or trade-offs do you face in contributing to or investing in these shared spaces?

### How can public park spaces and public-private partnerships create value from your perspective? (n=3)

- Spaces for businesses to spill out into pedestrian-oriented gathering spaces to sit, eat and gather
- Flexible use of the limited green space that is available
- Develop a system for residents to donate or contribute to local parks

### What would make partnership worthwhile to you? (n=2)

- Strategic joint partnerships to provide shared amenities with comprehensive developments
- Park space where users can grab food and sit at picnic table (e.g. to-go window at Rumer's Riverfront location)

### What challenges or trade-offs do you face in contributing to or investing in these shared spaces? (n=3)

- Daycare grant funding
- Changing political winds
- Business timeline does not align with political timelines

### What types of nearby park spaces, uses and features support your business?

#### Which pose challenges, based on their design or location? (n=5)

- Parks that integrate into the city
- Opportunity to showcase 'west coast' design elements
- Parks with amenities attract families-surrounding and integrated businesses, investments, etc.
- As a daycare, need equipment for all ages
- No clock radios

## Next Steps

Input received at the Mayor's Town Hall and Community Dialogue on Park Expansion in Moody Centre was considered as staff refined the Draft Parkland Strategy, and it will be considered during the Strategy's implementation as we plan and design future parks in Moody Centre. Participants' input is also being considered as we make updates to the Official Community Plan (OCP), Port Moody's long-term vision for the future.



Mayor's Town Hall & Community Dialogue on Park Expansion in Moody Centre:  
Engagement Summary | *Spring 2025*



*Prepared by MODUS Planning, Design & Engagement, Inc. on behalf of the City of Port Moody.*

## Appendix

### Display Boards for Community Dialogues

## MAYOR'S TOWN HALL AND COMMUNITY DIALOGUE ON PARK EXPANSION IN MOODY CENTRE

# Adapting to Change

## Key Trends

Communities everywhere are adapting to changes - from climate change and population growth, to shifts in how we live, work, and connect. These global forces of change will shape the way we plan and consider the valuable role of parks in Moody Centre.

### climate



Climate change is reshaping how we design, plan, and experience parks in growing urban areas like Moody Centre. Rising temperatures, more intense storms, and changing rainfall patterns affect both ecosystems and park experiences.

In Moody Centre, parks and greenspaces can help manage flooding, provide shade, support biodiversity, and offer year-round comfort for the community.

### population & demographics



Port Moody's population is expected to reach 71,800 by 2050, with growth in Moody Centre, Glenayre, Seaview, College Park, Harbour Heights, and Coronation Park. Seniors (65+) will make up a larger share of the city's expected population.

Increased housing density and diverse housing forms will lead to a decrease in private outdoor spaces like backyards and different patterns of park use.

### lifestyle and societal shifts

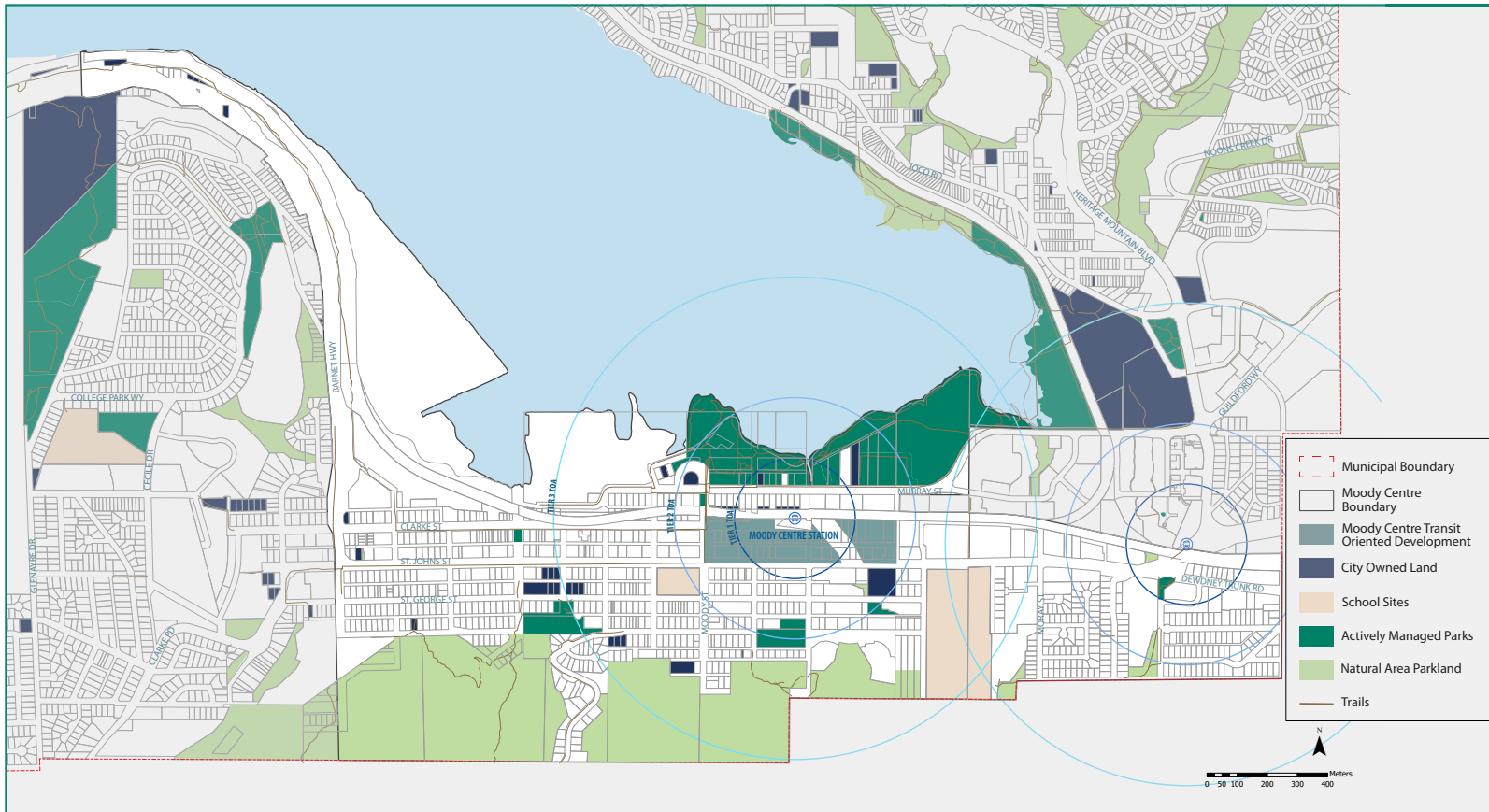


As lifestyles evolve, parks are becoming essential for wellness, recreation, and socializing. Technology is changing how people find and use parks through apps and digital tools to discover and navigate spaces. Apartment living, remote work and flexible schedules increase demand for nearby green space and lead to more spread-out park use throughout the day and week.



Mayor's Town Hall & Community Dialogue on Park Expansion in Moody Centre:  
Engagement Summary | Spring 2025

**MAYOR'S TOWN HALL AND COMMUNITY DIALOGUE ON PARK EXPANSION IN MOODY CENTRE**



**Transit Oriented Area (TOA):**

Provincial housing legislation designates TOAs around SkyTrain stations to increase density near rapid transit. For Port Moody, the two TOAs are located at Inlet Centre SkyTrain Station and Moody Centre SkyTrain Station. Height and density allowances are determined based on the distance from the transit centre in a series of rings set at 200m (Tier 1), 400m (Tier 2), and 800m (Tier 3) away.

## MAYOR'S TOWN HALL AND COMMUNITY DIALOGUE ON PARK EXPANSION IN MOODY CENTRE

# Moody Centre Today: Share Your Experiences

In Moody Centre, there are many different examples of existing and well-loved park spaces, amenities and activities.



Sports Facilities, Kyle Park



Plaza, Queen St. Plaza



Public Art, Queen St. Plaza



Rotary Skate Park



Walking Paths, Rocky Point Park



Bioswale, St. George St.



St. John's St. Multi-Use Path



Chip Kerr Pop-Up Park



Playground, Mosaic Park



Enclosed Play Areas, Inlet Park



Privately-Owned Public Space, Moody St.



Public Seating, Moody St.



Natural Playground, Inlet Park



Trails, Chines Park



Rocky Point Dog Park



Spray Park, Rocky Point Park



Sports Fields, Inlet Park



Play Features, Moody St. POPS

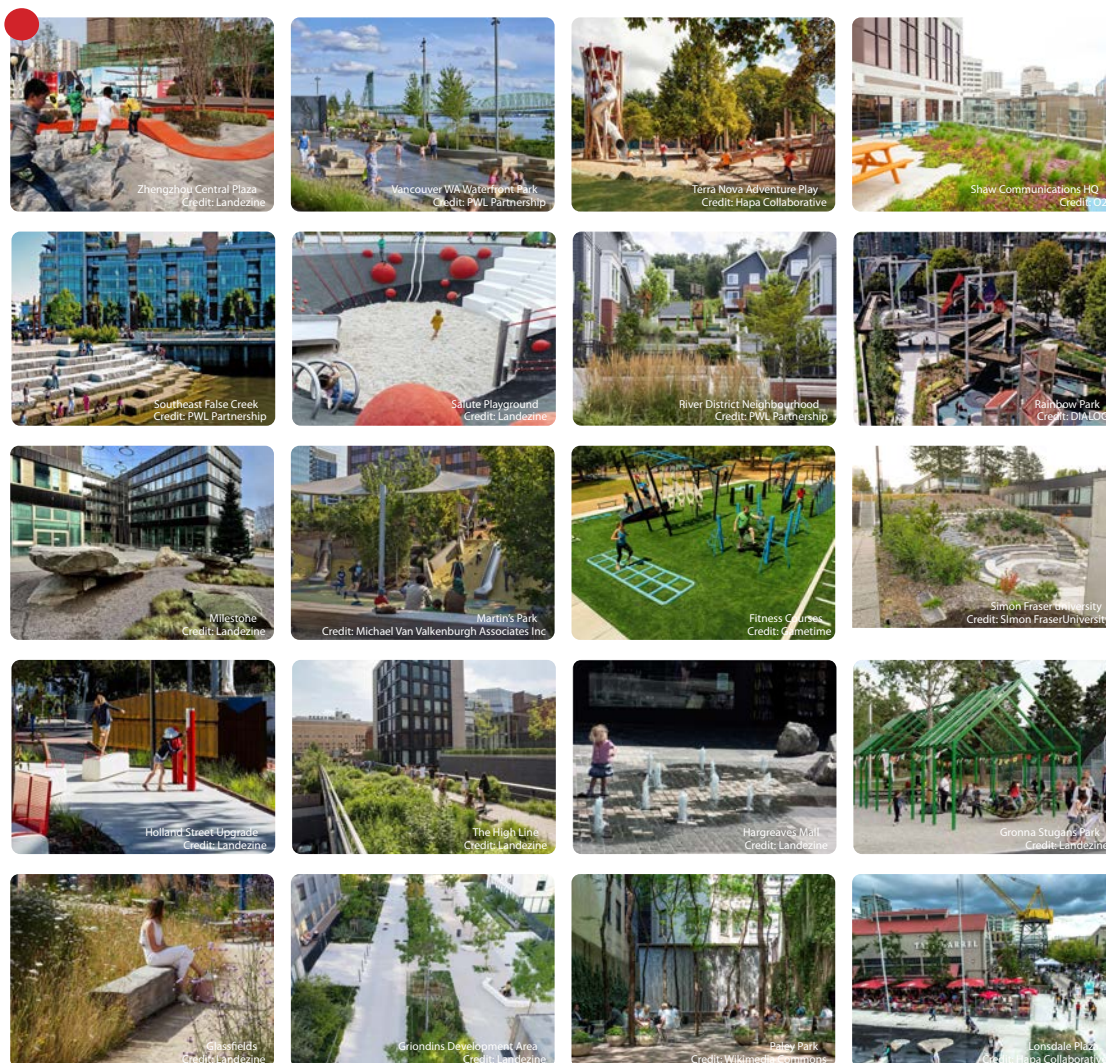


## MAYOR'S TOWN HALL AND COMMUNITY DIALOGUE ON PARK EXPANSION IN MOODY CENTRE

### Finding Inspiration Beyond Our City

#### Examples of Parks and Amenities

See how other cities around the world are designing parks to support growing communities. As cities grow, many are creating innovative parks and urban green spaces that support climate resilience, public health, creativity, and fun for all ages. **Use sticky dots to choose the ideas you'd most like to see reflected in Moody Centre's parks.**





## MAYOR'S TOWN HALL AND COMMUNITY DIALOGUE ON PARK EXPANSION IN MOODY CENTRE

### Finding Inspiration Beyond Our City

#### Examples of Parks and Amenities

See how other cities around the world are designing parks to support growing communities. As cities grow, many are creating innovative parks and urban green spaces that support climate resilience, public health, creativity, and fun for all ages. **Use sticky dots to choose the ideas you'd most like to see reflected in Moody Centre's parks.**



MAYOR'S TOWN HALL AND COMMUNITY DIALOGUE ON PARK EXPANSION IN  
MOODY CENTRE

## Delivering Parkland Services

Delivering great parks and urban green spaces in a growing neighbourhood takes careful planning, collaboration, and timing. Strategies like parkland acquisition, partnerships, and phasing (i.e. expanding and enhancing parkland services over time) can help deliver a connected and high-quality park system in Moody Centre that is connected to surrounding neighbourhoods.

## Tools for park service delivery

**Acquisition:** Parkland acquisition will be prioritized as the primary focus of investment to address long-term parkland needs and ensure equitable access. Expanding Port Moody's parkland requires strategic planning and resource management. Acquiring land early, when possible - securing opportunities before rising land costs and development pressures reduce availability - is a priority, even if park improvements are deferred until funding is available. The City will target larger, contiguous parcels where possible and acquire land in locations that improve access and connectivity.

**Partnerships:** Expanding parkland services will rely on strong partnerships—with School District 43 to expand joint-use agreements, with developers to create publicly accessible open spaces, and with other City departments like Engineering to deliver green streetscapes. Together, these efforts will strengthen the network of parks and urban green spaces, including tree canopies, pop-up park spaces, and enhanced pedestrian corridors.

**Phasing:** Delivering new parks and amenities in Moody Centre will occur in stages, recognizing that growth, redevelopment, and funding will happen over time. Park development will be phased to align with neighbourhood growth, evolving community needs, and funding availability, aiming to deliver new parks and trails where and when they are most needed. This approach also allows for coordination with renewals of existing parks, connectivity improvements, and other essential services.

**Innovation:** In a growing urban neighbourhood like Moody Centre, parks will need to be thoughtfully designed to make the most of limited space. Multi-functional, inclusive designs will blend play, gathering, nature, and recreation, often in creative formats. Pop-up parks, air space parks, and enhanced streets and plazas will help expand access to green open spaces, supporting a vibrant and climate-resilient community.

