

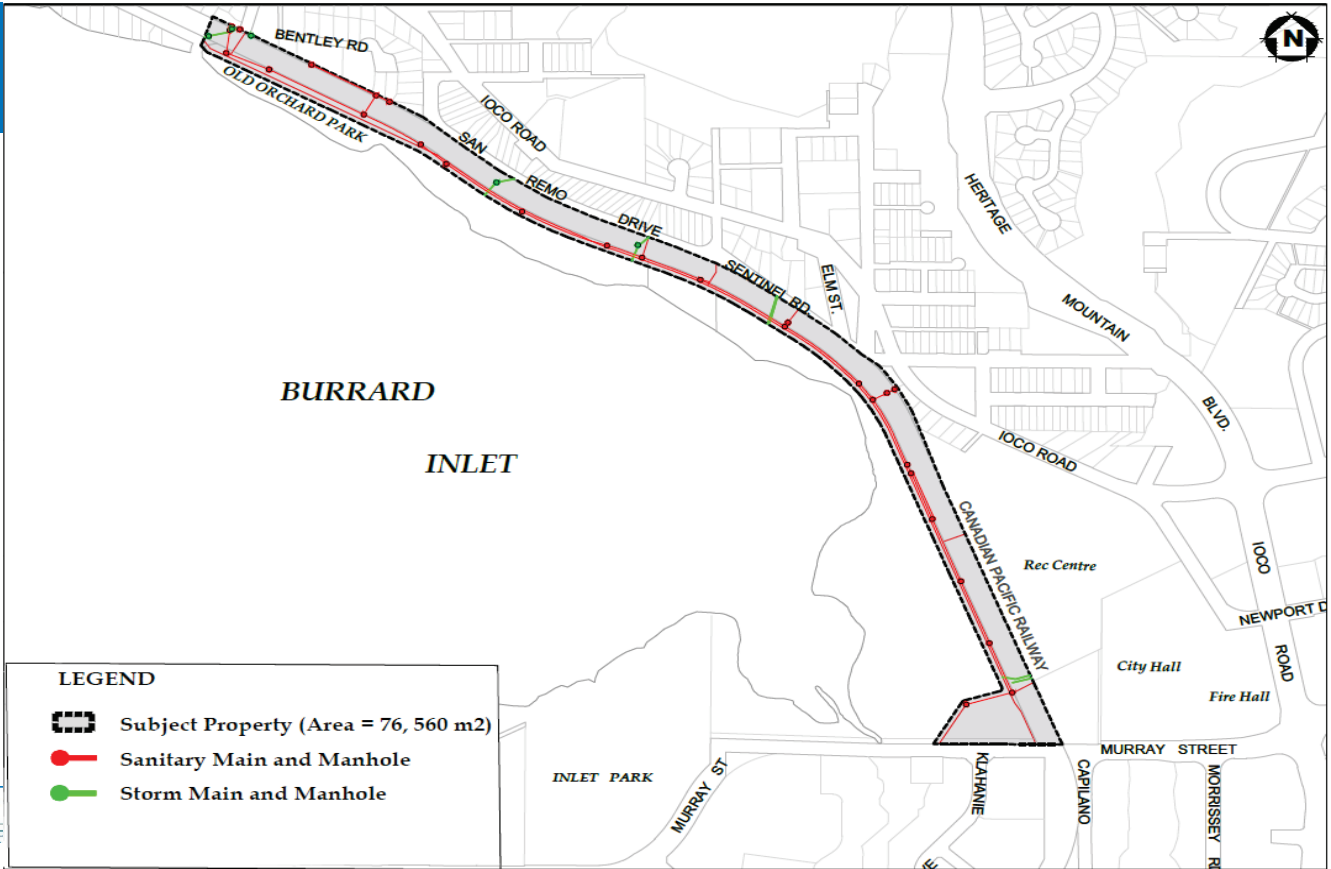


# Shoreline Trail Sanitary Sewer Upgrades Project

Parks & Environment Committee  
September 12, 2024

## Project Background

- Two sanitary sewer mains have reached end-of-life and are slated for rehabilitation
  - Gravity sanitary sewer main
  - Low pressure sanitary sewer main
- Shoreline Trail paved pathway to be rehabilitated at same time
  - Highly used for recreational purposes
  - In poor condition (root heaves, drainage issues, etc.)

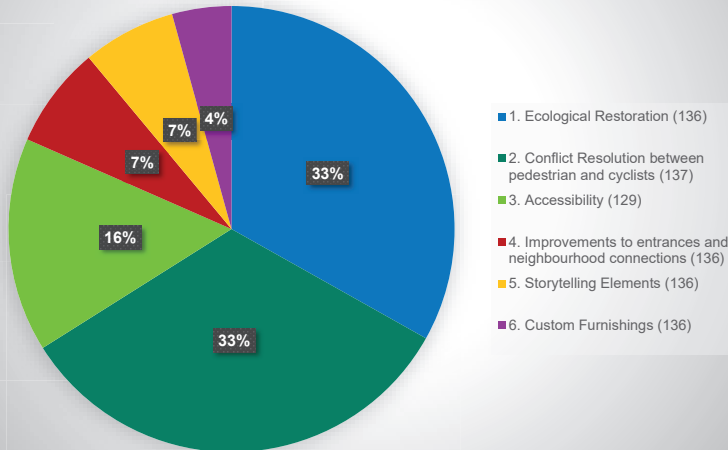


## Stakeholder Engagements

- Stakeholder and partner engagements were carried out with:
  - Parks and Recreation Committee
  - Environmental Protection Committee
  - Transportation Committee
  - Senior Focus Committee
  - Stewardship Group
  - HUB Tri-Cities Group
  - First Nations
- Key Feedback Items:
  - Important environmental features – impacts should be minimum
  - Existing pathway needs rehabilitation due to safety concerns with tripping hazards and drainage issues.
  - Pathway functions as a recreational facility – prioritize recreational users over commuters

# Public Engagement

## Survey Results - What kind of improvements to the trail would be most meaningful to the community?

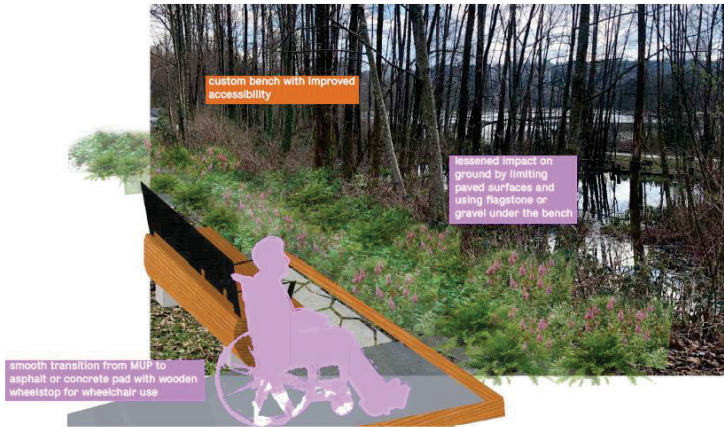


- Held at Old Orchard Park on August 28 and 29, 2020
- Online survey asked the public to rate the proposed key features from most to least important
- Feedback indicated that majority values improvements to the pathway such as:
  - Widen where possible
  - Accessibility improvements
  - Fix drainage/root heaving issues
  - Ecological restoration

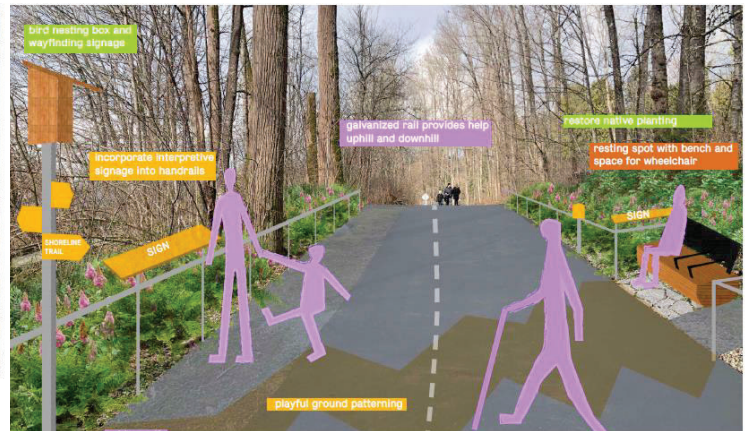
# Options Analysis - Pathway

- Three options were considered for upgrading the pathway considering variations of the following:
  - 3.3m wide – full depth repaving
  - 4.8m wide – full depth repaving
  - Surface repaving only
- Additional considerations include:
  - Accessibility improvements
  - Consistent widths (widening to 3.3m)
  - Wayfinding and story-telling boards including connections to the Shoreline House Post project slated to be completed in 2023

# Proposed Pathway Design Features



Accessibility improvements – Wheelchair pads



Accessibility improvements – Additional benches, handrails

# Proposed Pathway Design Features

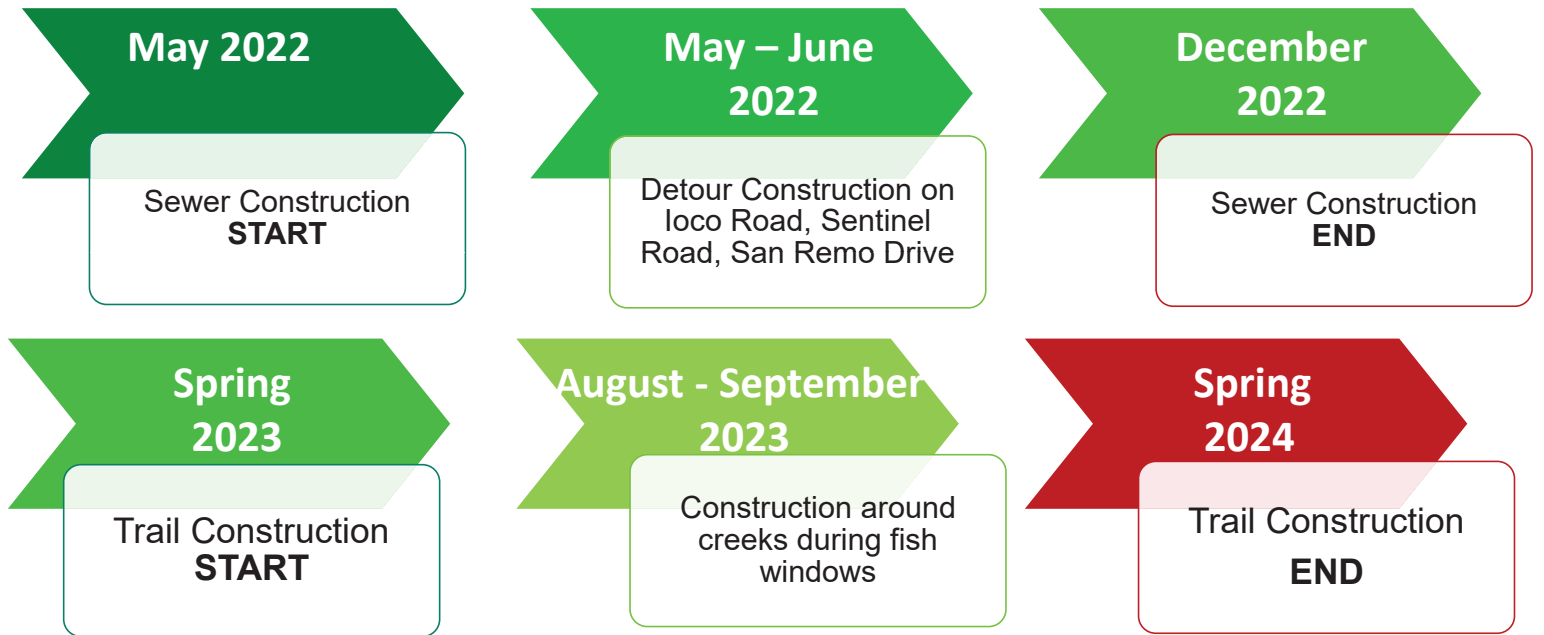


Wayfinding signage



Environmental Restoration – Pollinator meadows  
Path Widening – 3.3m consistent widths

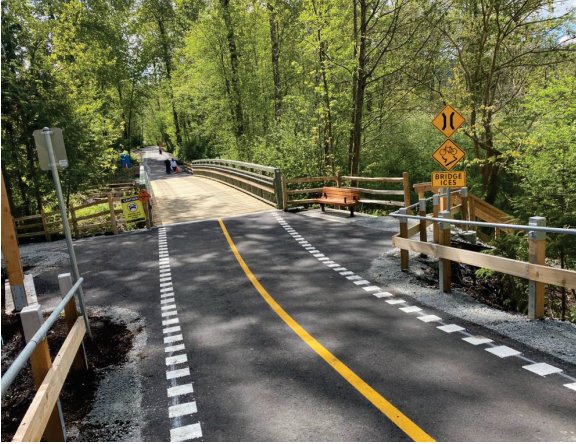
## Project Timeline - Construction



## Construction Progress

- Trail Construction works were completed in May 2024
- Minimal environmental impacts and inconvenience to users
- Work to mitigate deficiencies and maintenance of plantings ongoing

## Key Features



- Gathering spaces
- Pavement markings at conflict areas
- Improvements to trail connections
- Improved widths to consistent 3.3m



- Better connection to Alderside Road including new crosswalk

## Key Features

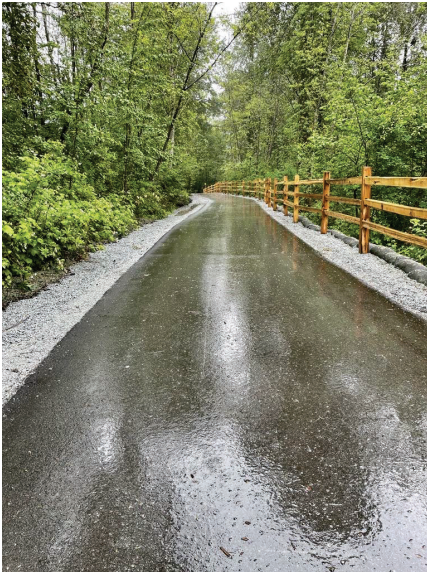


- Accessibility ramp and stairs at Old Orchard Hall

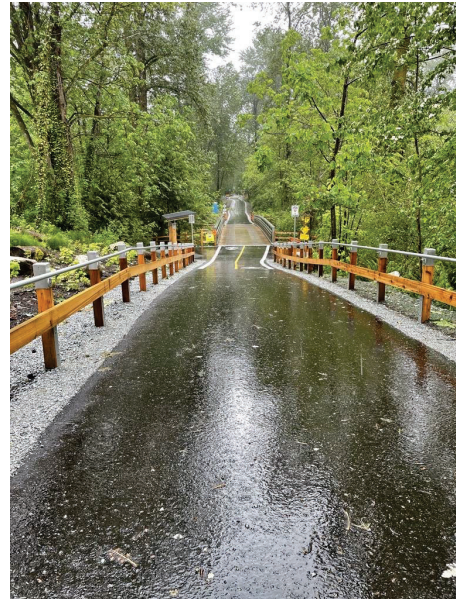


- New bollards with locking mechanism

## Key Features



- Fencing at retaining walls



- Handrails where the grade is greater than 8%

## Key Features



- New triple waste receptacles



- New bike racks



- New benches

# Key Features



- New Kiosks

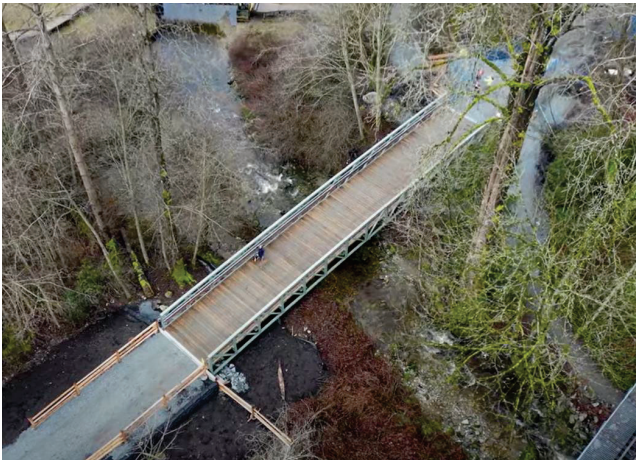


- Interpretive Panels



- Interpretive Icons

# Key Features



- Noons Creek Bridge Replacement

[The City of Port Moody Shoreline Trail Bridge Project 2024 - YouTube](#)





# Key Features



- Restoration planting



**Thank You**

