



# City of Port Moody

## Bylaw No. 3471

A Bylaw to amend City of Port Moody Official Community Plan Bylaw, 2014, No. 2955 to change the land use designation on a portion of the subject site at 2331 St. Johns Street from Multi-Family Residential to Mixed Use – Moody Centre and to change the proposed number of storeys for the subject properties at 2331-2335 St. Johns Street and a 5.5-metre-wide portion of Queens Street right-of-way from three (3) and four (4) to six (6) storeys.

The Council of the City of Port Moody enacts as follows:

### 1. Citation

- 1.1 This Bylaw may be cited as “City of Port Moody Official Community Plan Bylaw, 2014, No. 2955, Amendment Bylaw No. 38, 2024, No. 3471 (2331-2335 St. Johns Street and a 5.5-metre-wide portion of Queens Street right-of-way)”.

### 2. Amendments

- 2.1 The Official Community Plan Overall Land Use Plan – Map 1 in Schedule “A” of City of Port Moody Official Community Plan Bylaw, 2014, No. 2955 is amended as indicated on Schedule A of this Bylaw, to change the land use designation of the following properties from Multi-Family Residential to Mixed Use – Moody Centre:

Strata Lot 1 District Lot 202 Group 1 New Westminster District Strata Plan NW282 Together With An Interest In The Common Property In Proportion To The Unit Entitlement Of The Strata Lot As Shown On Form 1  
PID: 001-257-692

Strata Lot 2 District Lot 202 Group 1 New Westminster District Strata Plan NW282 Together With An Interest In The Common Property In Proportion To The Unit Entitlement Of The Strata Lot As Shown On Form 1  
PID: 000-765-040

Strata Lot 3 District Lot 202 Group 1 New Westminster District Strata Plan NW282 Together With An Interest In The Common Property In Proportion To The Unit Entitlement Of The Strata Lot As Shown On Form 1  
PID: 001-257-706

Strata Lot 4 District Lot 202 Group 1 New Westminster District Strata Plan NW282 Together With An Interest In The Common Property In Proportion To The Unit Entitlement Of The Strata Lot As Shown On Form 1  
PID: 001-257-714

- 2.2 The Official Community Plan Overall Land Use Plan – Map 11 – Evergreen Line Sub-Areas Map in Schedule “A” of City of Port Moody Official Community Plan Bylaw, 2014, No. 2955 is amended by changing the maximum number of storeys permitted from three and four to six for the following properties as indicated on Map 11 – Evergreen Line Sub-Areas Map, attached to this Bylaw as Schedule B, and on Detail Map, attached to this Bylaw as Schedule C:

Strata Lot 1 District Lot 202 Group 1 New Westminster District Strata Plan NW282 Together With An Interest In The Common Property In Proportion To The Unit Entitlement Of The Strata Lot As Shown On Form 1  
PID: 001-257-692

Strata Lot 2 District Lot 202 Group 1 New Westminster District Strata Plan NW282 Together With An Interest In The Common Property In Proportion To The Unit Entitlement Of The Strata Lot As Shown On Form 1  
PID: 000-765-040

Strata Lot 3 District Lot 202 Group 1 New Westminster District Strata Plan NW282 Together With An Interest In The Common Property In Proportion To The Unit Entitlement Of The Strata Lot As Shown On Form 1  
PID: 001-257-706

Strata Lot 4 District Lot 202 Group 1 New Westminster District Strata Plan NW282 Together With An Interest In The Common Property In Proportion To The Unit Entitlement Of The Strata Lot As Shown On Form 1  
PID: 001-257-714

Lot 22 Block 1 District Lot 202 Group 1 New Westminster District Plan 55  
PID: 011-453-877

- 2.3 The Official Community Plan Overall Land Use Plan – Map 11 – Evergreen Line Sub-Areas Map in Schedule “A” of City of Port Moody Official Community Plan Bylaw, 2014, No. 2955 is amended by designating the maximum number of six storeys for the 5.5-metre-wide portion of Queens Street right-of-way as indicated on Map 11 – Evergreen Line Sub-Areas Map, attached to this Bylaw as Schedule B, and on Detail Map, attached to this Bylaw as Schedule C.

### 3. Attachments and Schedules

- 3.1 The following schedules are attached to and form part of this Bylaw:
- Schedule A – Location Map
  - Schedule B – Map 11 – Evergreen Line Sub-Areas Map
  - Schedule C – Detail Map

4. Severability

4.1 If a portion of this Bylaw is found invalid by a court, it will be severed, and the remainder of the Bylaw will remain in effect.

Read a first time this 23<sup>rd</sup> day of July, 2024.

Read a second time this 23<sup>rd</sup> day of July, 2024.

Public Hearing held this \_\_\_ day of \_\_\_\_, 2024.

Read a third time this \_\_\_ day of \_\_\_\_, 2024.

Adopted this \_\_\_ day of \_\_\_\_, 2024.

\_\_\_\_\_  
M. Lahti  
Mayor

\_\_\_\_\_  
S. Lam  
City Clerk

I hereby certify that the above is a true copy of Bylaw No. 3471 of the City of Port Moody.

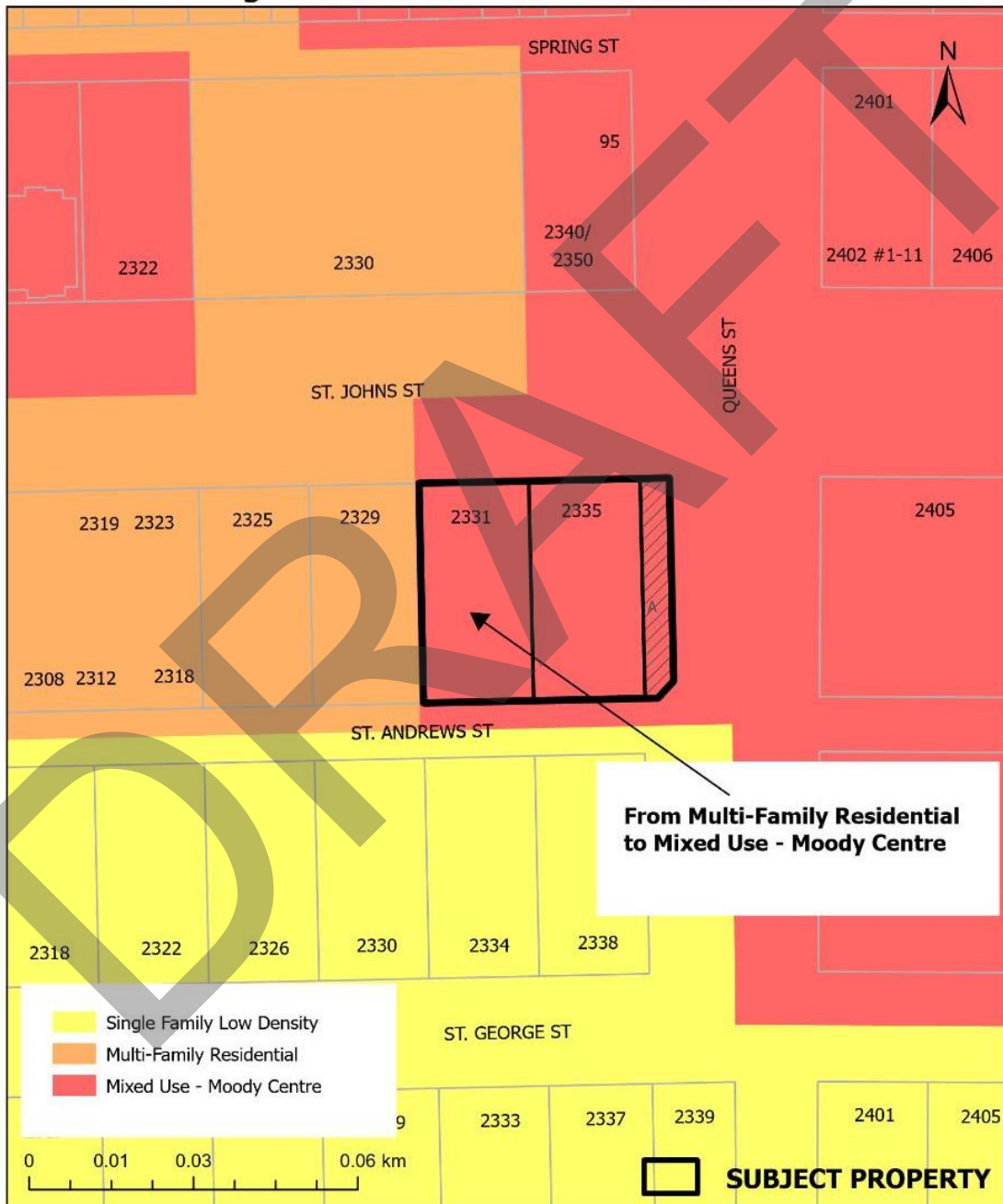
\_\_\_\_\_  
S. Lam  
City Clerk

Schedule A to Bylaw No. 3471 – Location Map

This is a certified true copy of the map referred to in section 2 of City of Port Moody Official Community Plan Bylaw, 2014, No. 2955, Amendment Bylaw No. 38, 2024, No. 3471 (2331-2335 St. Johns Street and a 5.5-metre-wide portion of Queens Street right-of-way).

\_\_\_\_\_  
Corporate Officer

Land Use Designations 2331-2335 St Johns St

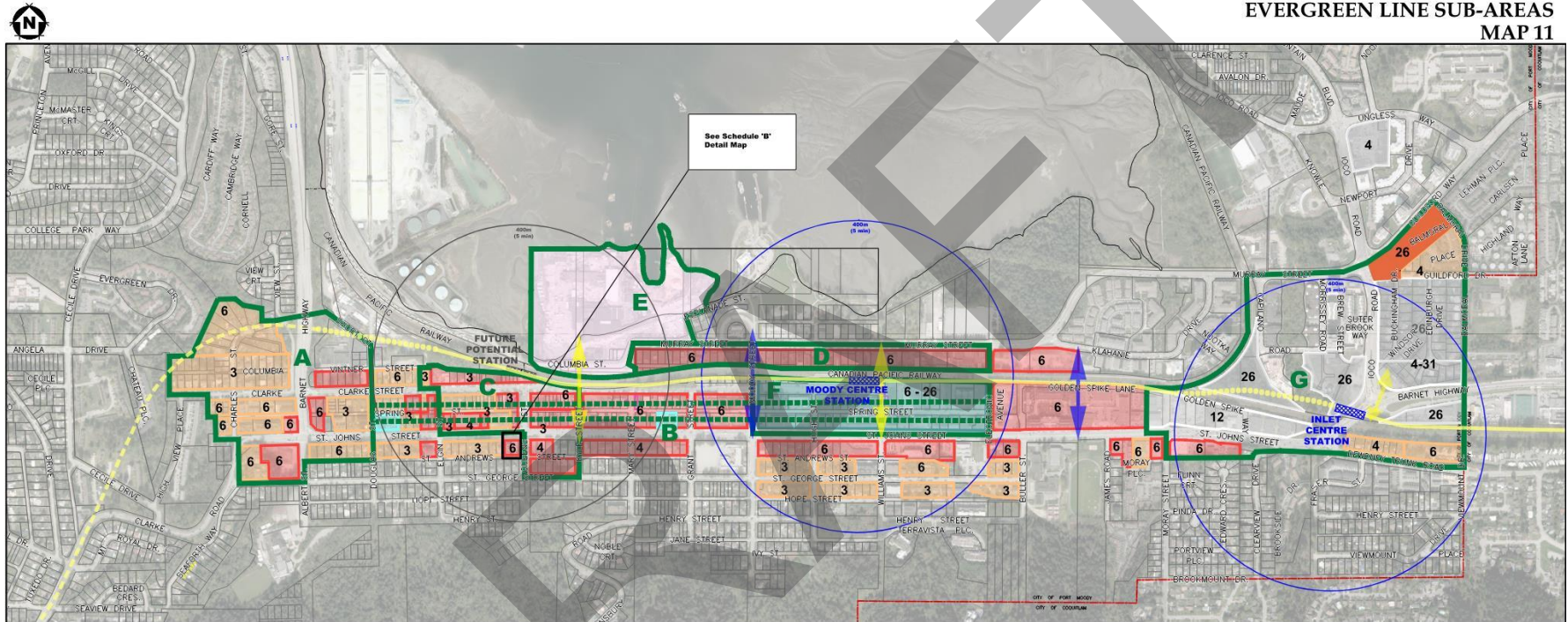


File: M:\Mapping Requests - Internal\LOCATION MAPS - (St. Johns Street)\2331-2335 St. Johns Street\2331-2335 St. Johns Street - OCP LanduseV2.pdf

Last Modified: 7/9/2024

Schedule B to Bylaw No. 3471

**DRAFT OFFICIAL  
COMMUNITY PLAN  
EVERGREEN LINE SUB-AREAS  
MAP 11**



**EVERGREEN LINE SUB AREAS**

- A** Westport
- B** Spring Street Promenade
- C** Heritage Commercial District
- D** Murray Street Boulevard
- E** Oceanfront District
- F** Moody Centre Station Transit Oriented Development
- G** Inlet Centre Station Transit Oriented Development

**LEGEND**

- Multi-Family Residential
- High-Rise Residential
- Mixed Use - Inlet Centre
- Mixed Use - Moody Centre
- Moody Centre Station Transit-Oriented Development
- Public and Institutional
- Mixed Employment
- Mixed Use - Oceanfront District
- Evergreen Line - Tunnel
- Evergreen Line - Elevated
- Evergreen Line - Ground Level
- 400m Radius from Station (= 5 min Walk)
- Existing Connections
- Future Connections
- Municipal Boundary

3 Proposed Number of Storeys

The City of Port Moody makes no representation or warranty expressed or implied with respect to the accuracy, completeness or appropriateness of the information contained herein.  
Produced by Engineering & Parks Date: 9-Jul-2024

\*NOTES: This map shows the amended locations of the Evergreen Line Stations and Future Potential Station. Evergreen Line projected completion date of 2016.

Schedule C to Bylaw No. 3471 – Detail Map

