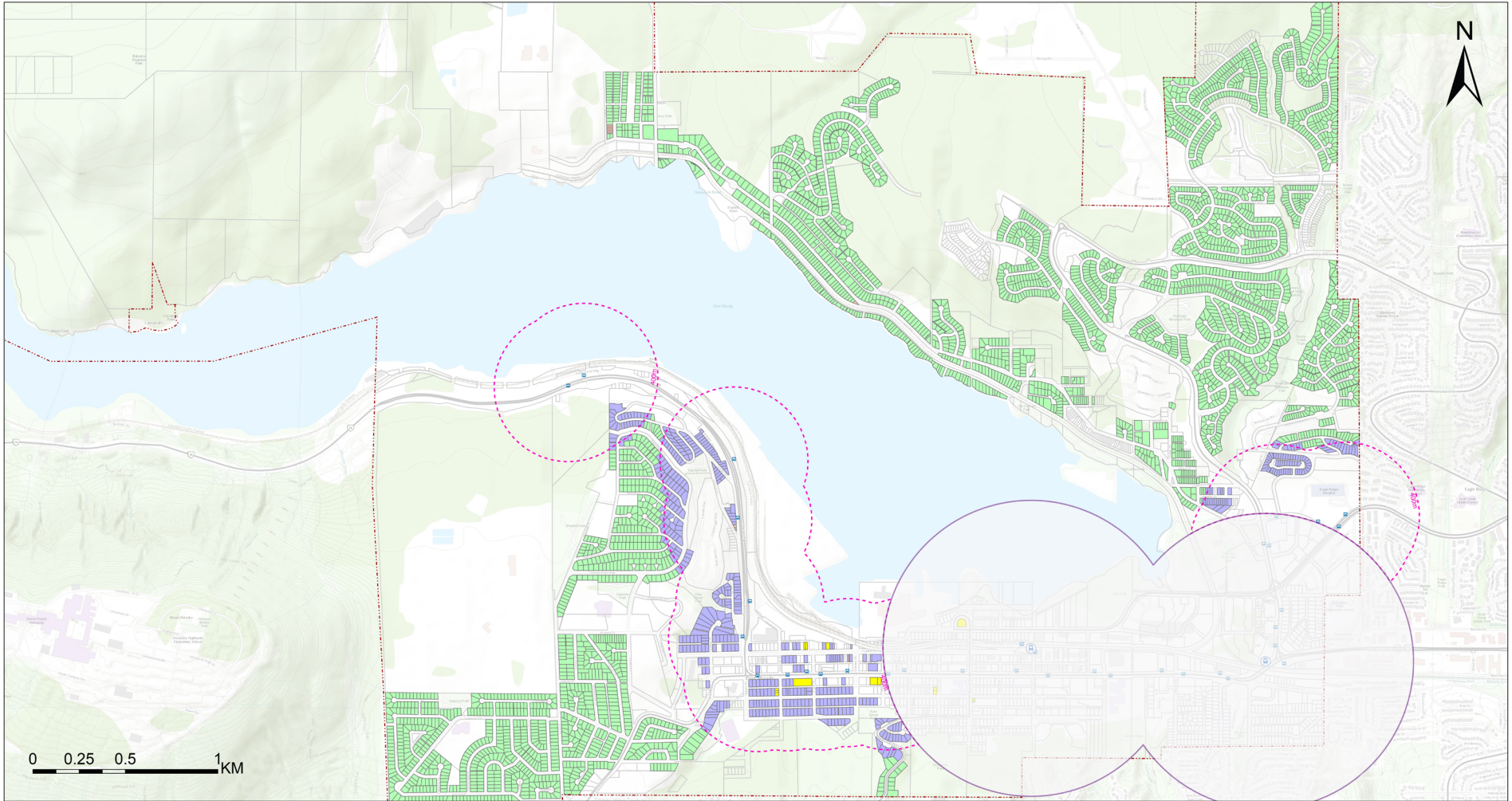


# Map 3 Small-Scale Multi-Unit Housing (SSMUH) Areas



**PORT MOODY**  
CITY OF THE ARTS

SSMUH - Housing Units Per Lot:

- 3 Units
- 4 Units
- 6 Units

- Prescribed Bus Stops
- Prescribed Bus Stop 400m Radius
- Transit Oriented Areas (TOA)

- Exempted Heritage Properties \*
- Municipal Boundary

\* Properties under a completed Heritage Revitalization Agreement prior to December 7, 2023, and Municipally Designated Heritage Properties.

Notes: Refer to Chapter 11: Heritage Conservation in Official Community Plan Bylaw No. 2955 for further information regarding the Moody Centre and Ioco Townsite Heritage Conservation Areas designated in the plan.

All City policies still apply to new developments in SSMUH area.

Date Printed: 5/16/2024