

SUBDIVISION PLAN OF:
 LOTS 36, 37, 38, 39, 41 PLAN 55
 LOT 40 EXCEPT THE WEST 3 FEET PLAN 55
 THE WEST 3 FEET OF LOT 40 PLAN 55
 LOT 42 EXCEPT PLAN EPP17730
 LOTS A AND B PLAN EPP118323
 SOUTH HALF LOT 44 PLAN 55
 NORTH HALF LOT 44 PLAN 55
 SOUTH HALF LOT 43 PLAN 55
 NORTH HALF LOT 43 PLAN 55
 PART OF PARCEL A ((REFERENCE PLAN 3753) PLAN 55
 PART OF LOT 65 EXCEPT PLAN LMP18410 PLAN 22766
 ALL OF BLOCK 3 DISTRICT LOT 202 GROUP 1 NEW WESTMINSTER DISTRICT

PURSUANT TO SECTION 100(1)(b) OF THE LAND TITLE ACT AND
 BCGS 92G.026

0 25 50 m
 The intended plot size of this plan is 864 mm in width by 560 mm in height
 (D 502) when plotted at a scale of 1:500

This Plan Lies Within Integrated Survey Area No. 35 - Port Moody, NAD83 (CSRS) 4.0.BC1.MWRD

Grid bearings are derived from observations between
 geodetic control monuments 82C1949 and 82D1950 and
 are referred to the central meridian of UTM Zone 10N.

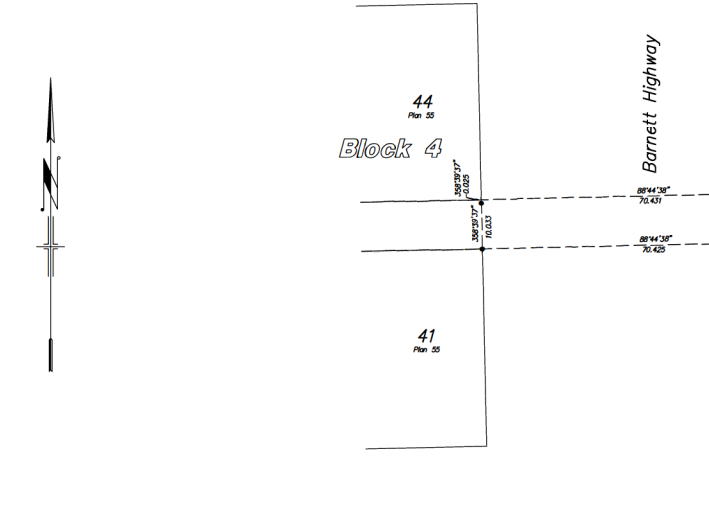
The UTM coordinates and estimated absolute accuracy achieved
 are derived from the MASCOF published coordinates and standard deviations
 for geodetic control monuments 89J3249 and 89J1950.

This plan shows horizontal ground-level distances unless otherwise specified.
 To compute grid distances, multiply ground-level distances by the average
 combined factor of 0.9996006. The average combined factor has been determined
 based on geodetic control monument 89K42M8.

LEGEND:

All Distances Are in Metres And Decimals Thereof

- Control Monument Found
- Standard Iron Post Found
- Standard Iron Post Set
- Lead Plug Found
- Old Survey Monument
- OSM



This plan lies within the Metro
 Vancouver Regional District. **PRELIMINARY**

The field survey represented by this plan was
 completed on the 5th day of May, 2023
 Mike Demaree, BCLS 793

Datum: NAD83 (CSRS) 4.0.BC1.MWRD UTM Zone 10
 UTM Northing: 5436230.808
 UTM Easting: 509661.071
 Point combined factor: 0.9996006
 Estimated absolute accuracy: +/- 0.013 m

Datum: NAD83 (CSRS) 4.0.BC1.MWRD UTM Zone 10
 UTM Northing: 5436236.230
 UTM Easting: 510261.377
 Point combined factor: 0.9996011
 Estimated absolute accuracy: +/- 0.013 m