

City of Port Moody - Neighbourhood Parks

Legend

- Municipal Boundary
- 2021 Census Population by Census Tract

Neighbourhood Parks

Neighbourhood Parks w/ Eagle Park

- Neighbourhood Parks
- 400m Buffer*

* 400m buffer was not included around Eagle Park which is undeveloped. The location of Eagle Park is included for information purposes.

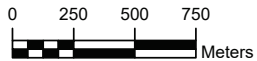
2021 Census Population Data:

Statistics Canada, 2021 Census, Catalogue no. 98-316-X2021001

CSV File: Census metropolitan areas (CMAs), tracted census agglomerations (CAs) and census tracts (CTs)
<https://www12.statcan.gc.ca/census-recensement/2021/dp-pd/prof/details/download-telecharger.cfm?Lang=E>

2021 Geospatial Census Tract Boundaries:

<https://catalogue.data.gov.bc.ca/dataset/current-census-tracts>



The City of Port Moody makes no representation or warranty expressed or implied with respect to the accuracy, completeness or appropriateness of the information contained hereon.

Map produced by the City of the Port Moody Information Services
Date Exported: 5/30/2022 11:35 AM

