

NOTE
 TREES PROPOSED FOR RETENTION ARE AS PER ARBORIST DRAWINGS PROVIDED BY HUGHES CARR, TREE CONSULTANTS LTD. DATED FEBRUARY 8, 2022.

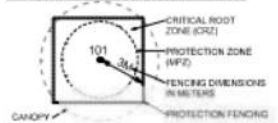
REFER TO ARBORIST DRAWINGS FOR MORE INFORMATION OF TREES PROPOSED FOR RETENTION, THE PROTECTION LEVEL, PROTECTION FENCING AND REPLACEMENT TREES.

REFER TO ARBORIST DRAWINGS FOR TREES THAT ARE TO BE REMOVED.

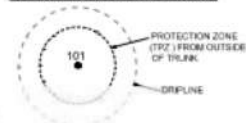
| TREE PROTECTION FENCING | | | |
|-------------------------|------------------|------------|------|
| # | TYPE | DBH METRES | FEET |
| 195 | WESTERN REDCEDAR | 15cm | 1.2m |
| 197 | WESTERN REDCEDAR | 15cm | 3.6m |
| 198 | APPLE | 15cm | 1.3m |
| 199 | WESTERN HEMLOCK | 15cm | 3.2m |
| 200 | MOUNTAIN ASH | 15cm | 1.9m |
| 201 | WESTERN HEMLOCK | 15cm | 5.1m |

| REPLACEMENT TREES | | | |
|-------------------|-------------------|------|--|
| QTY | TYPE | SIZE | |
| 1 | PACIFIC DOGWOOD | 7cm | |
| 1 | WINE MAPLE | 7cm | |
| 1 | JAPANESE SNOWBELL | 7cm | |
| 1 | SITKA SPRUCE | 1.5m | |

TREE PROPOSED FOR RETENTION FENCE



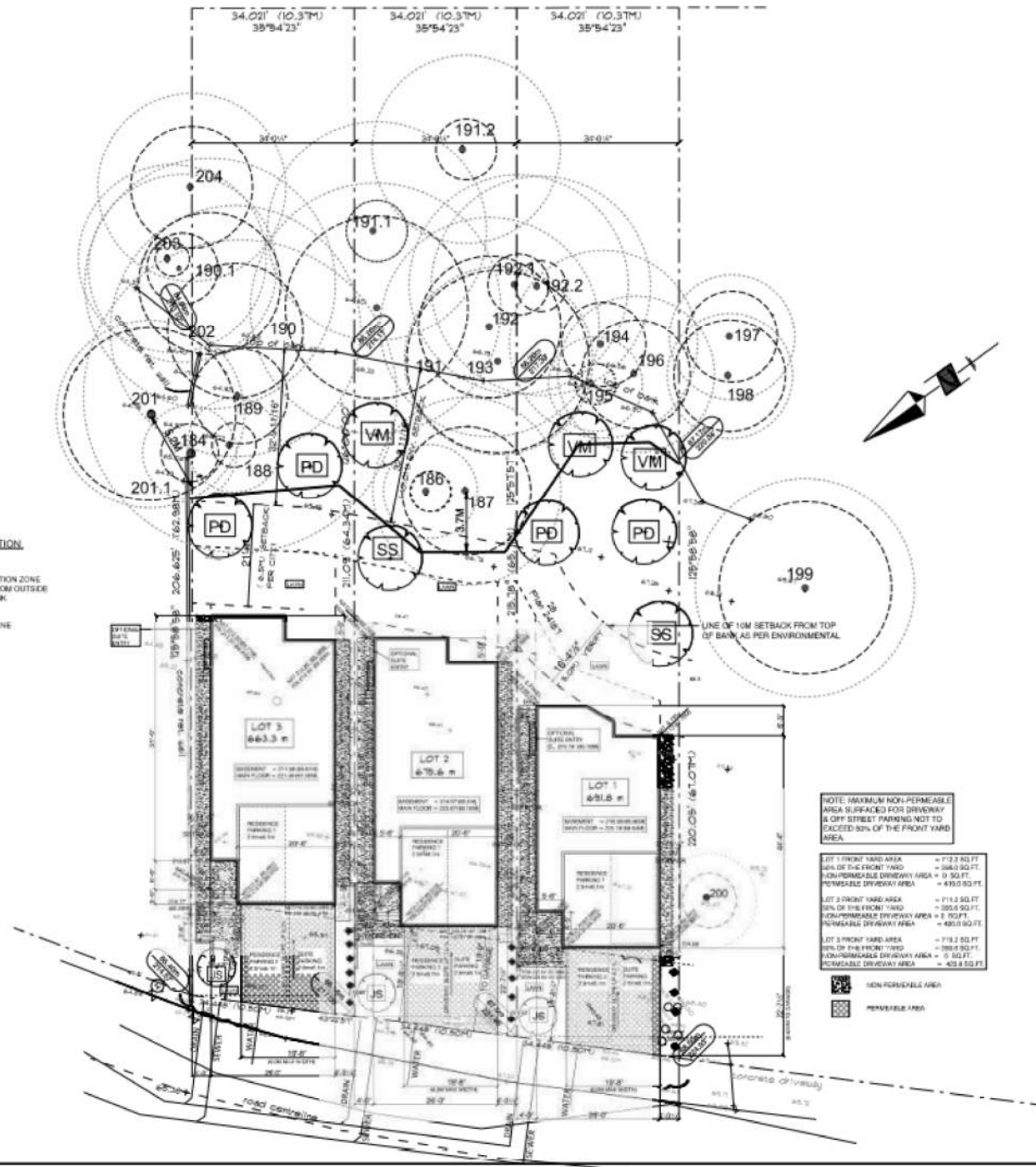
TREES PROPOSED FOR RETENTION



TREE INVENTORY

| # | Type | Action | DBH | MPZ |
|-------|------------------|--------|----------|------|
| 186 | Western redcedar | Retain | 15cm | 1.2m |
| 187 | Western hemlock | Retain | 33/30cm | 3.8m |
| 188 | Apple | Retain | 10/7.5cm | 1.3m |
| 189 | Walnut | Retain | 47cm | 2.8m |
| 190 | Western hemlock | Retain | 66cm | 4.0m |
| 190.1 | Western redcedar | Retain | 70cm | 4.2m |
| 191 | Western hemlock | Retain | 90cm | 5.4m |
| 191.1 | Western hemlock | Retain | 30cm | 1.8m |
| 191.2 | Red alder | Retain | 30cm | 1.8m |
| 192 | Western hemlock | Retain | 70cm | 4.2m |
| 192.1 | Western hemlock | Retain | 30cm | 1.8m |
| 192.2 | Western hemlock | Retain | 25cm | 1.5m |
| 193 | Western redcedar | Retain | 90cm | 5.4m |
| 194 | Western hemlock | Retain | 42cm | 2.5m |
| 195 | Holly | Retain | 15cm | 1.2m |
| 196 | Western hemlock | Retain | 55cm | 3.2m |
| 197 | Red alder | Retain | 45cm | 2.7m |
| 198 | Red alder | Retain | 55cm | 3.3m |
| 199 | Douglas fir | Retain | 85cm | 5.1m |
| 200 | Mountain ash | Retain | 9/9/9cm | 1.6m |
| 201 | Western hemlock | Retain | 85cm | 5.1m |
| 201.1 | Deciduous shrub | Retain | 10/4/4cm | 1.7m |
| 202 | Western hemlock | Retain | 35cm | 2.1m |
| 203 | Western hemlock | Retain | 95cm | 5.7m |
| 204 | Western hemlock | Retain | 60cm | 3.6m |

DBH=diameter, MPZ= protection zone



NOTE: MAXIMUM NON-PERMEABLE AREA SURFACED FOR DRIVEWAY & OFF STREET PARKING NOT TO EXCEED 50% OF THE FRONT YARD AREA.

| | |
|-----------------------------|------------------|
| LOT 1 FRONT YARD AREA | = 712.5 SQ. FT. |
| 50% OF THE FRONT YARD | = 356.25 SQ. FT. |
| NON-PERMEABLE DRIVEWAY AREA | = 0.50 SQ. FT. |
| PERMEABLE DRIVEWAY AREA | = 435.75 SQ. FT. |
| LOT 2 FRONT YARD AREA | = 712.5 SQ. FT. |
| 50% OF THE FRONT YARD | = 356.25 SQ. FT. |
| NON-PERMEABLE DRIVEWAY AREA | = 1.50 SQ. FT. |
| PERMEABLE DRIVEWAY AREA | = 435.75 SQ. FT. |
| LOT 3 FRONT YARD AREA | = 712.5 SQ. FT. |
| 50% OF THE FRONT YARD | = 356.25 SQ. FT. |
| NON-PERMEABLE DRIVEWAY AREA | = 0.50 SQ. FT. |
| PERMEABLE DRIVEWAY AREA | = 435.75 SQ. FT. |

NON-PERMEABLE AREA
 PERMEABLE AREA

REVISIONS:

RUSBOURNE DESIGN LTD
 2514 GLENDOIK WAY
 MILL BAY, B.C., V0R 2P1
 TEL: 604 862 1630
 email: info@rusbournedesigns.com

PROJECT

SEAFORTH WAY,
 PORT MOODY, B.C.

SHEET TITLE

SITE PLAN

DATE May-09-22

DRAWN J.B.

CHECKED B.R.

SCALE: 3/32" = 1'-0"

PLAN NUMBER

TS-4B

SHEET NUMBER

A1