

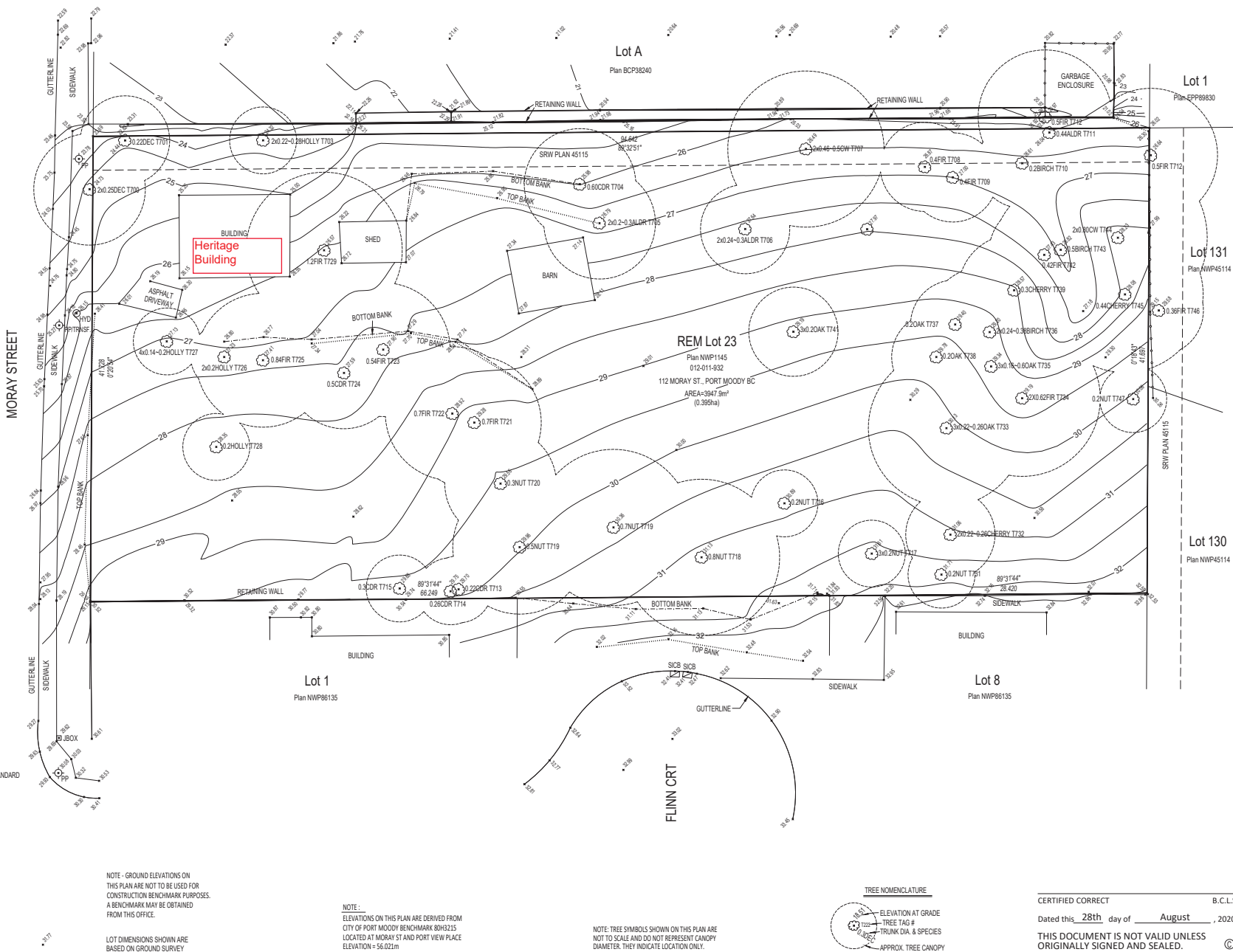
BC LAND SURVEYORS TOPOGRAPHIC PLAN OF WEST HALF LOT 23 EXCEPT: PART SUBDIVIDED BY PLAN 84915;
DISTRICT LOT 233 GROUP 1 NEW WESTMINSTER DISTRICT PLAN 1145



The intended plot size of this plan is 560mm in width
432mm in height (C Size)
when plotted at a scale of 1:250



OLSEN & ASSOCIATES
BRITISH COLUMBIA LAND SURVEYORS
204-15585 24th AVENUE, SURREY, B.C. V4A 2J4
PHONE: 604-531-4367 Fax: 604-531-5811
email: info@olsensurveying.ca
File No: 180557



LEGEND	
WV	INDICATES WATER VALVE
CB	CATCH BASIN
WM	WATER METER
STM MH	STORM MANHOLE
SAN MH	SANITARY MANHOLE
UP	UTILITY POLE
HYD	HYDRANT
PP	POWER POLE
GV	GAS VALVE
LB	LAWN BASIN
PPLS	POWER POLE / LAMP STANDARD
UMH	UNKNOWN MANHOLE
SUMP	SUMP
SV	SEWER VALVE
MW	MONITORING WELL
LS	LAMP STANDARD
LD	LAWN DRAIN
SN	SIGN
GW	GUTTERLINE
UB	UTILITY BOX
EB	ELECTRICAL BOX
INV.	INVERT
DEC	DECIDUOUS
MPL	MAPLE
CDR	CEDAR

NOTE: GROUND ELEVATIONS ON
THIS PLAN ARE NOT TO BE USED FOR
CONSTRUCTION BENCHMARK PURPOSES.
A BENCHMARK MAY BE OBTAINED
FROM THIS OFFICE.

NOTE:
ELEVATIONS ON THIS PLAN ARE DERIVED FROM
CITY OF PORT MOODY BENCHMARK 80H3215
LOCATED AT MORAY ST AND PORT VIEW PLACE
ELEVATION = 56.021m

NOTE: TREE SYMBOLS SHOWN ON THIS PLAN ARE
NOT TO SCALE AND DO NOT REPRESENT CANOPY
DIAMETER. THEY INDICATE LOCATION ONLY.



CERTIFIED CORRECT B.C.L.S.
Dated this 28th day of August, 2020
THIS DOCUMENT IS NOT VALID UNLESS
ORIGINALLY SIGNED AND SEALED.