

IMMIGRANT DEMOGRAPHICS PORT MOODY, B.C.

- 2018 -

PORT MOODY

IMMIGRANT DEMOGRAPHICS

Your quick and easy look at facts and figures around immigration. Newcomers are an important and growing part of your community. Here's what you need to know.

GLOSSARY OF TERMS:

CENSUS refers to the population Census of Canada, which is taken at five-year intervals and counts persons and households and a wide variety of characteristics to provide a statistical portrait of the country.

TOTAL POPULATION refers to the total population counts in private households of a specific geographic area, regardless of immigration status.

IMMIGRANTS includes persons who are, or who have ever been, landed immigrants or permanent residents. In the 2016 Census of Population, 'Immigrants' includes immigrants who landed in Canada on or prior to May 10, 2016.

RECENT IMMIGRANTS are immigrants who arrived in Canada between January 1, 2011 and May 10, 2016.

METRO VANCOUVER comprises 21 municipalities, one electoral district and one First Nation located in the southwest corner of British Columbia's mainland. It is bordered by the Strait of Georgia to the west, the U.S. border to the south, Abbotsford and Mission to the east, and unincorporated mountainous areas to the north.

NOTES:

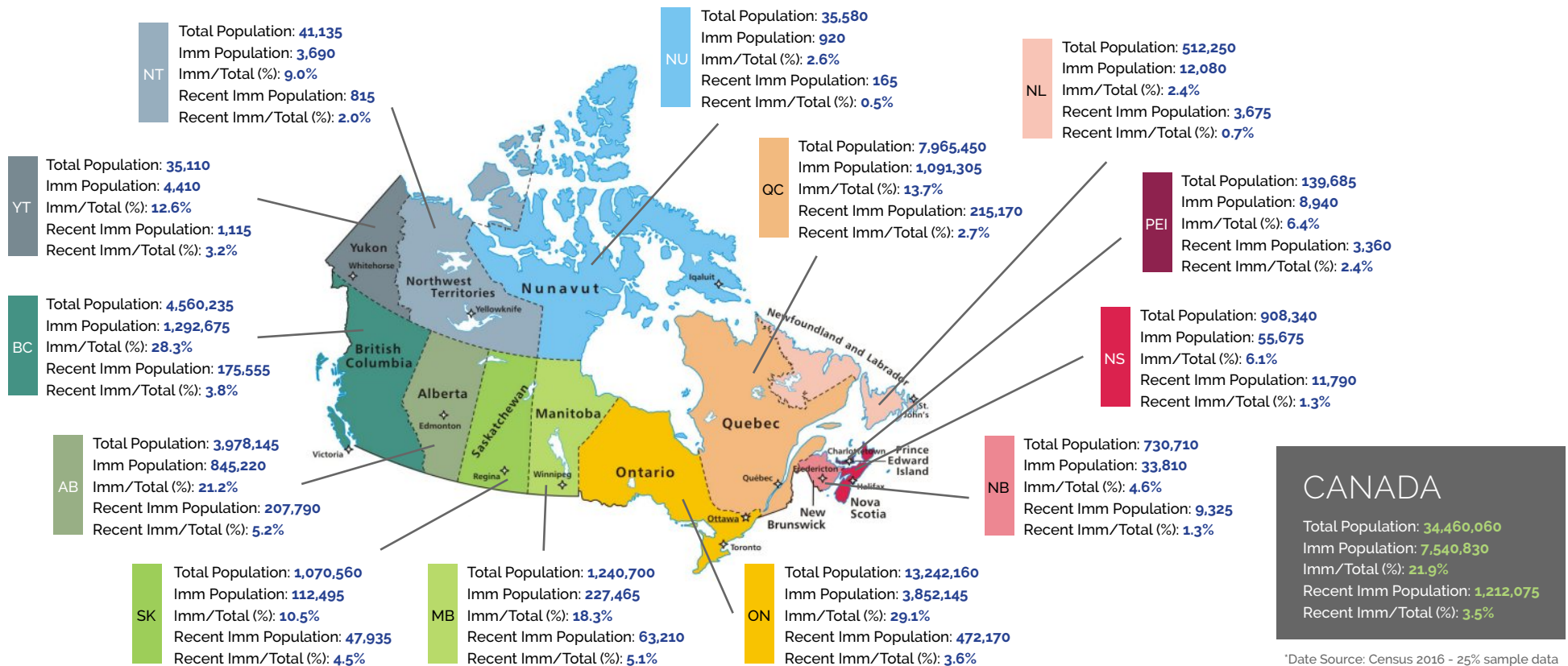
- Total population data in each chart or table may vary slightly due to different data sources, i.e. Census 2016 100% data and 25% sample data; Census 2011 and NHS 2011.
- Totals in each chart or table may vary slightly due to rounding.
- Data sources: the following profile has been developed with data and statistics from Stats Canada Census 2016, Census 2011 and National Household Survey (NHS) 2011, and Census 2006 Profiles.

Port Moody is a city in Metro Vancouver, enveloping the east end of Burrard Inlet. Port Moody is bordered by Coquitlam on the east and south, and Burnaby on the west. The villages of Belcarra and Anmore, along with the rugged Coast Mountains, lie to the northwest and north respectively. The Port Moody Public Library has one location.



Map source: Google Maps

NATIONAL/PROVINCIAL IMMIGRATION TOTALS (CENSUS 2016)



*Date Source: Census 2016 - 25% sample data

- British Columbia has the second highest immigrant population compared to any other province or territory in Canada, only Ontario has a greater immigrant population. Census 2016 reported that a total of 1,292,675 immigrants made B.C. their home, representing 17.1% of Canada's total immigrant population. More than half (51.1%) of Canada's immigrants live in Ontario and 14.5% live in Quebec. The Prairie Provinces are home to 15.7% of Canada's immigrants.
- In the last census period, B.C. received fewer recent immigrants (175,555) than Ontario (472,170), Quebec (215,170) and Alberta (207,790).
- 28.3% of British Columbia's population was born outside Canada, second to Ontario (29.1%) and notably higher than the national level of 21.9%.

POPULATION AND IMMIGRATION – MAINLAND / SOUTHWEST BC (CENSUS 2016 AND NHS 2011)

COMMUNITY	TOTAL POPULATION 2016	TOTAL POP. GROWTH (%) 2011-2016	IMM POPULATION 2016	IMM/TOTAL (%) 2016	RECENT IMM POPULATION 2016	RECENT IMM / TOTAL (%) 2016	IMM POP GROWTH (#) 2011 - 2016	IMM POP GROWTH (%) 2011 - 2016
British Columbia	4,560,235	5.6%	1,292,675	28.3%	175,555	3.8%	100,800	8.5%
Metro Vancouver	2,426,235	6.5%	989,540	40.8%	142,530	5.9%	76,230	8.3%
Vancouver	618,210	4.6%	262,770	42.5%	37,330	6.0%	4,020	1.6%
Surrey	511,545	10.6%	220,155	43.0%	36,335	7.1%	32,310	17.2%
Richmond	196,665	4.1%	118,305	60.2%	15,245	7.8%	5,430	4.8%
Burnaby	230,080	4.3%	115,145	50.0%	16,065	7.0%	3,970	3.6%
Coquitlam	138,090	9.8%	61,060	44.2%	9,530	6.9%	8,980	17.2%
Abbotsford	138,555	5.9%	38,225	27.6%	5,440	3.9%	4,290	12.6%
Delta	100,840	2.4%	31,240	31.0%	3,355	3.3%	2,720	9.5%
North Vancouver, District	84,875	1.8%	26,505	31.2%	3,240	3.8%	1,535	6.1%
New Westminster	69,905	7.6%	24,375	34.9%	3,500	5.0%	2,635	12.1%
Langley District	115,835	12.6%	22,495	19.4%	2,615	2.3%	3,980	21.5%
North Vancouver, City	52,185	9.8%	19,930	38.2%	3,740	7.2%	2,170	12.2%
West Vancouver, District	41,680	-0.5%	18,615	44.7%	2,940	7.1%	1,485	8.7%
Port Coquitlam	57,900	4.7%	18,430	31.8%	1,940	3.4%	2,050	12.5%
Maple Ridge	80,975	8.2%	15,460	19.1%	1,520	1.9%	2,530	19.6%
Chilliwack	82,210	7.5%	10,985	13.4%	1,070	1.3%	1,335	13.8%
Port Moody	33,450	1.6%	10,755	32.2%	1,220	3.6%	365	3.5%
Langley, City	25,315	3.2%	4,395	17.4%	525	2.0%	590	15.5%
White Rock	19,120	3.2%	4,895	25.6%	535	2.7%	360	7.9%
Pitt Meadows	18,425	4.7%	3,955	21.5%	385	2.1%	-35	-0.9%

Note: Table ordered by number of total immigrants.

* Data Source: Census 2016 - 25% sample data; NHS 2011

POPULATION AND IMMIGRATION – MAINLAND / SOUTHWEST BC (CENSUS 2016 AND NHS 2011)

- In 2016, Port Moody had 33,450 residents, of which 10,755 were immigrants. These represented 1.4% and 1.1% of Metro Vancouver's total and immigrant population respectively. The Tri-Cities (Coquitlam, Port Coquitlam and Port Moody combined) had 229,440 residents and 90,245 immigrants, representing 9.5% and 9.1% of Metro Vancouver's total and immigrant population respectively.
- 81.2% of B.C.'s recent immigrants lived in the Metro Vancouver region. Of which 80% resided in Vancouver (26.2%), Surrey (25.5%), Burnaby (11.3%), Richmond (10.7%) and Coquitlam (6.7%).
- Port Moody's growth rate in its immigrant population (3.5%) as well the total population growth (1.6%) were some of the lowest rates in Metro Vancouver, dramatically lower than Metro Vancouver's regional levels – 8.3% growth in immigrant population and 6.5% growth in total population.
- Between 2011 and 2016, Port Moody received 1,220 recent immigrants, compared to the City's net increase in its total immigrant population of 365.



Less than
1.0% of Metro Vancouver's
recent immigrants live
in **Port Moody**



Between 2011 - 2016, Port Moody received

1,220 RECENT
IMMIGRANTS

POPULATION AND IMMIGRATION TRENDS: PORT MOODY

IMMIGRATION TRENDS (2001 - 2016)

	Port Moody			Metro Vancouver		
	Total Population*	Number	Immigrants** % of Total Population	Total Population*	Number	Immigrants % of Total Population
2016	33,551	10,755	32.15%	2,463,431	989,540	40.8%
2011	32,975	10,390	31.6%	2,313,328	913,310	40.0%
2006	27,512	8,050	29.3%	2,116,581	831,265	39.6%
2001	23,816	6,400	26.9%	1,986,965	738,555	37.5%

*Data source: Census data (100% data);

**Data source: Census / NHS data (25% sample data).

- Census 2016 shows that Port Moody had 10,755 immigrant residents, representing 32.15% of its total population significantly lower than the regional level of 40.8% for Metro Vancouver.
- During the recent census period (2011-2016), Port Moody saw a rapid slowdown in both total (1.6%) and immigrant population (3.5%) growth when compared to the significant increases in its total population (19.8%) and immigrant population (29.1%) during the last census period (2006 to 2011).
- Over past census periods, immigration was an important driver of population growth for Port Moody. Since 2001, Port Moody has had an increase of 68% (4,355) in its immigrant population, more than double the growth rate of 30.9% (5,380) for the City's Canadian-born population. Over the same period, Metro Vancouver had an increase of 34.0% in its immigrant population and 18.1% in the Canadian-born population.

IMMIGRANT ARRIVALS BY PERIOD OF IMMIGRATION (CENSUS 2016)

- Census 2016 shows that Port Moody's recent immigrants made up 11.4% (1,225) of its immigrant population, notably lower than Metro Vancouver's regional level of 14.4%.
- Compared to the previous census period (2006-2011), both Port Moody and the Metro Vancouver region received slightly fewer recent immigrants than in the recent census period. Census 2011 showed that 1,940 and 155,125 recent immigrants lived in Port Moody and Metro Vancouver, respectively.

	Port Moody		Metro Vancouver	
	#	%	#	%
Total Immigrants	10,755	100%	989,540	100.0%
2011 to 2016	1,225	11.4%	142,535	14.4%
2006 to 2010	1,875	17.4%	143,580	14.5%
2001 to 2005	1,940	18.0%	124,890	12.6%
1991 to 2000	2,375	22.1%	247,835	25.0%
1981 to 1990	1,190	11.1%	120,730	12.2%
Before 1981	2,145	19.9%	209,975	21.2%

POPULATION BY AGE AT IMMIGRATION (CENSUS 2016 AND NHS 2011)

- Canada's immigration policy generally results in the arrival of many "working age" immigrants. Between 2011 and 2016, about 57.4% of Port Moody's recent immigrants were between the ages of 15 and 44 upon arrival in Canada, notably lower than Metro Vancouver's regional level (62.7%), and also marginally less than the City's level for the previous census period (60.1% between 2006 and 2011).
- Compared with the previous census period, Port Moody received a greater proportion of immigrants aged 45 and over, and a smaller proportion of immigrants aged 14 and younger: 19.7% (Census 2016) vs. 11.9% (NHS 2011) for those aged 45 years and over, 22.2% (Census 2016) vs. 27.6% for those aged 14 years and younger.

	Port Moody				Metro Van	
	Census 2016		NHS 2011		Census 2016	
	#	%	#	%	#	%
Recent Immigrants	1,220	100%	1,940	100%	142,530	100.0%
Under 5 years	95	7.8%	135	7.0%	8,370	5.9%
5 to 14 years	185	15.2%	400	20.6%	16,365	11.5%
15 to 24 years	105	8.6%	190	9.8%	19,855	13.9%
25 to 44 years	595	48.8%	975	50.3%	69,485	48.8%
45 years and over	240	19.7%	230	11.9%	28,450	20.0%

TOP 10 PLACES OF BIRTH - BY TOTAL AND RECENT IMMIGRANT POPULATIONS (CENSUS 2016)

Canada			British Columbia			Metro Vancouver			Port Moody					
	#	%		#	%		#	%	#	%	#	%	#	%
Recent Immigrants	1,212,075	100.0%	Recent Immigrants	175,555	100.0%	Recent Immigrants	142,530	100%	Total Immigrants	10,755	100.0%	Recent Immigrants	1,225	100.0%
Philippines	188,805	15.6%	China	38,105	21.7%	China	35,890	25.2%	Korea, South	1,420	13.2%	China	280	22.9%
India	147,190	12.1%	India	27,455	15.6%	India	21,380	15.0%	China	1,075	10.0%	Korea, South	160	13.1%
China	129,015	10.6%	Philippines	26,685	15.2%	Philippines	20,200	14.2%	United Kingdom	995	9.3%	Iran	155	12.7%
Iran	42,075	3.5%	Iran	8,645	4.9%	Iran	8,315	5.8%	Iran	960	8.9%	United States	105	8.6%
Pakistan	41,480	3.4%	Korea, South	8,030	4.6%	Korea, South	6,635	4.7%	United States	465	4.3%	Philippines	70	5.7%
United States	33,060	2.7%	United Kingdom	6,535	3.7%	United States	4,065	2.9%	Hong Kong	420	3.9%	United Kingdom	65	5.3%
Syria	29,950	2.5%	United States	6,490	3.7%	United Kingdom	3,850	2.7%	Philippines	375	3.5%	Mexico	45	3.7%
United Kingdom	24,445	2.0%	Mexico	2,885	1.6%	Taiwan	2,325	1.6%	Romania	350	3.3%	Ukraine	40	3.3%
France	24,150	2.0%	Taiwan	2,500	1.4%	Mexico	2,295	1.6%	Taiwan	290	2.7%	South Africa, Republic of	30	2.4%
Korea, South	21,710	1.8%	Japan	2,290	1.3%	Iraq	1,850	1.3%	Poland	255	2.4%	Japan	25	2.0%
Other places	530,195	43.8%	Other places	45,935	26.3%	Other places	35,825	25.0%	Other places	4,150	38.5%	Other places	250	20.3%

- In B.C. and Metro Vancouver, China was the single largest source country of recent immigrants. Nationally, the Philippines was the largest source country for recent immigrants to Canada.
- China became the largest source country for Port Moody's recent immigrant population (22.9%), while South Korea remained the top source country for the City's total immigrant population (16.9%).
- In 2016, Port Moody had a much smaller proportion of visible minorities (30.4%) compared to Metro Vancouver (48.9%). People of Chinese (10.3%), Korean (5.3%) and West Asian (3.8%) descent were the three largest visible minority groups in the City. Among recent immigrants, 70.9% reported as a visible minority; led by people of Chinese (24.6%), Korean (13.1%) and West Asian (13.1%) descent.

NUMBER OF IMMIGRANTS BY IMMIGRATION CATEGORY (2016)

Admission category and applicant type for the immigrant population in private households who landed between 1980 and 2016 - 25% sample data.

	Port Moody				Metro Vancouver			
	Total Immigrants		Recent Immigrants		Total Immigrants		Recent Immigrants	
	#	%	#	%	#	%	#	%
Total Immigrants	8,725	100%	1,225	100%	794,150	100.0%	142,530	100.0%
Economic Immigrants	5,900	67.6%	825	67.3%	461,955	58.2%	89,850	63.0%
Principal Applicants	2,160	24.8%	315	25.7%	176,955	22.3%	38,630	27.1%
Secondary Applicants	3,740	42.9%	500	40.8%	285,000	35.9%	51,215	35.9%
Immigrants Sponsored by Family	1,825	20.9%	350	28.6%	249,920	31.5%	42,665	29.9%
Refugees	940	10.8%	50	4.1%	71,115	9.0%	9,260	6.5%
Other Immigrants	65	0.7%	0	0.0%	11,160	1.4%	760	0.5%

*Note: 'Other immigrants' includes immigrants who were granted permanent resident status under a program that does not fall within the Economic Immigration Program, Family Class or the Refugee and Protected Persons categories. Other Immigrants category includes those who were granted permanent resident status under public policy or humanitarian and compassionate cases.

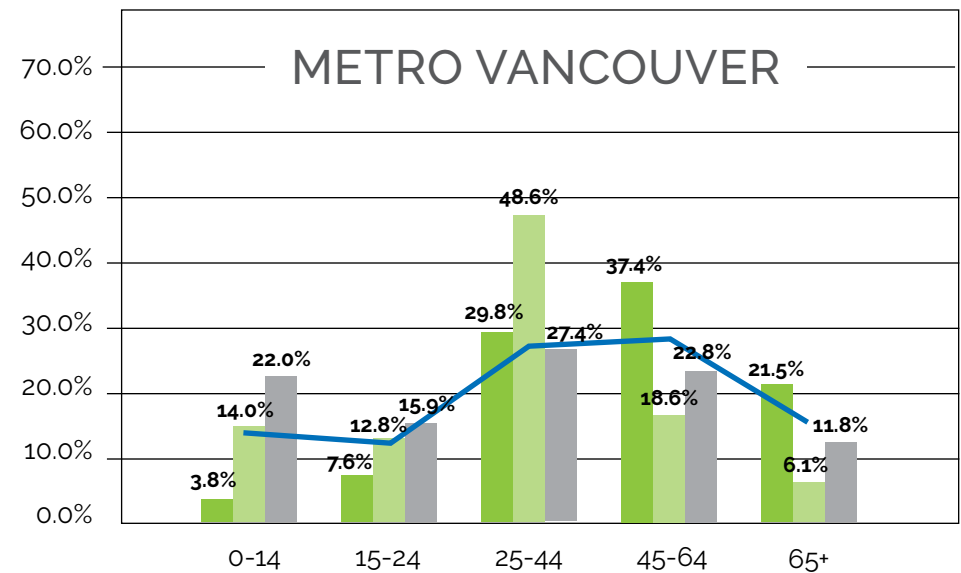
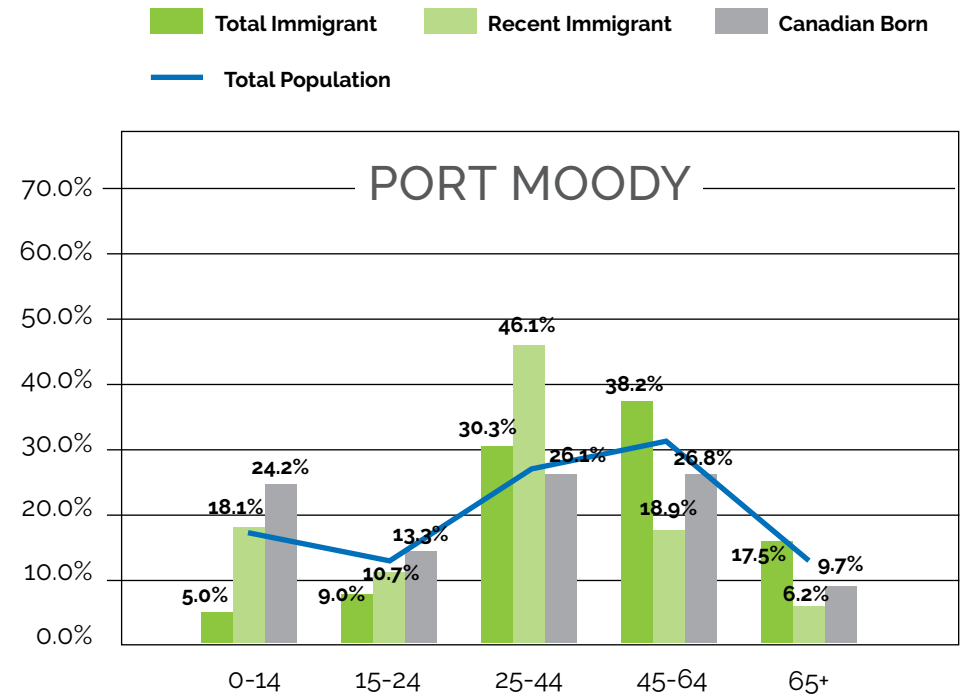
- Economic immigrants make up more than two thirds of the immigrant population in Port Moody. 67.6% of its total immigrant population and 67.3% of its recent immigrant population arrived under the economic class, notably higher than Metro Vancouver's regional levels (58.2% of total immigrants and 63% of recent immigrants).
- Port Moody received a smaller proportion of recent refugees than Metro Vancouver during the last census period: 4.1% vs. 6.5%. In contrast, Port Moody had a slightly larger proportion of long-term refugees than the region: 10.8% of Port Moody's total population were refugees, compared to 9.0% for Metro Vancouver.

AGE DISTRIBUTION – PORT MOODY (CENSUS 2016)

- Immigration is commonly viewed as a key economic solution to Canada's aging population. In 2016, the average age of Port Moody's recent immigrants was 34.6, compared to 47 for its total immigrants and 39 for the total population.
- In 2016 working age immigrants (25-64 years) made up 68.6% and 65.0% of Port Moody's total immigrant and recent immigrant population respectively, significantly higher than 52.8% of its Canadian born population.
- Port Moody's Canadian born population had a much larger proportion (24.2%) of young people between the ages of 0-14 than their immigrant (5.0%) and recent immigrant peers (18.1%).
- In contrast, Port Moody had a much larger proportion of immigrant seniors (65 years or above) compared to their Canadian-born peers: 17.5% of immigrants vs. 9.7% of the Canadian-born population.

AGE DISTRIBUTION - METRO VANCOUVER (CENSUS 2016)

- Port Moody had a slightly younger population than Metro Vancouver where the average age was 34.7 years for recent immigrants, 49 years for the total immigrant population and 41 for its total population.

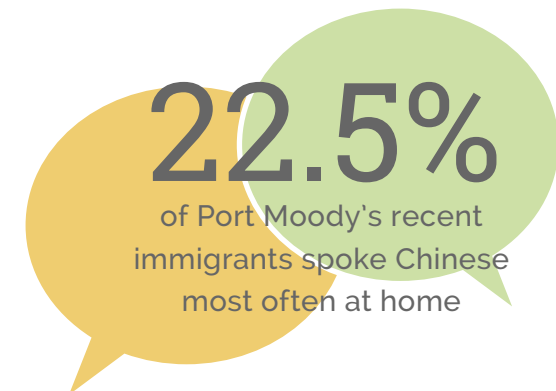


LANGUAGE

TOP 5 NON-OFFICIAL HOME LANGUAGES (CENSUS 2016)

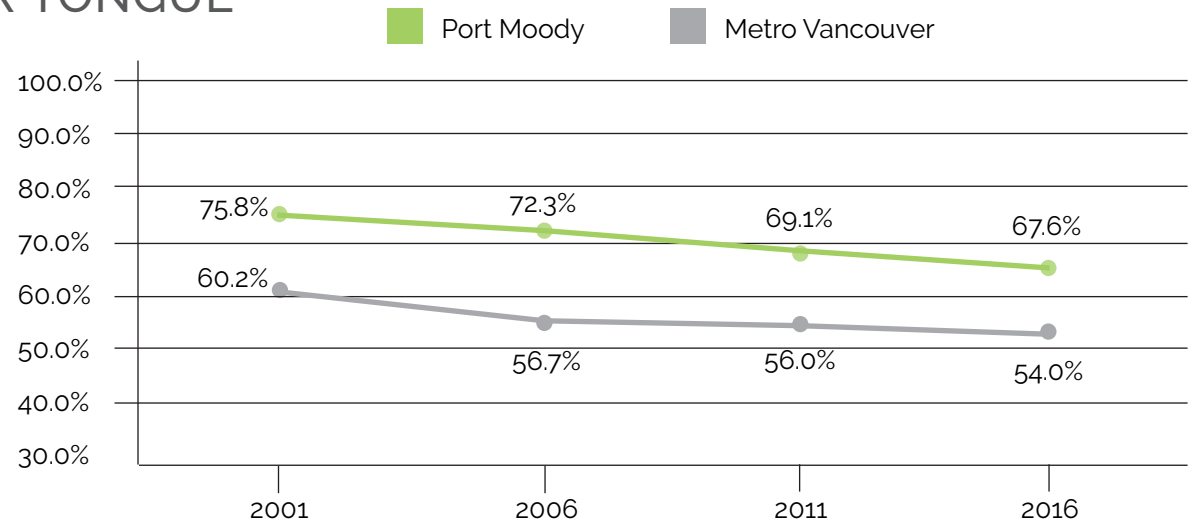
Port Moody					Metro Vancouver			
	#	%		#	%		#	%
Total Immigrants	10,755	100%	Recent Immigrants	1,220	100%	Recent Immigrants	142,535	100.0%
Non-Official Languages	4,675	43.5%	Non-Official Languages	715	58.6%	Non-Official Languages	88,570	62.1%
Korean	1,055	9.8%	Mandarin	255	20.9%	Mandarin	26,905	18.9%
Mandarin	870	8.1%	Persian (Farsi)	130	10.7%	Punjabi (Panjabi)	12,940	9.1%
Persian (Farsi)	705	6.6%	Korean	125	10.2%	Tagalog (Pilipino, Filipino)	7,790	5.5%
Cantonese	415	3.9%	Spanish	45	3.7%	Persian (Farsi)	7,055	4.9%
Spanish	315	2.9%	Russian	40	3.3%	Cantonese	6,095	4.3%
Other Non-Official Languages	1,315	12.2%	Other Non-Official Languages	120	9.8%	Other Non-Official Languages	27,785	19.4%

- In 2016, more than half (58.6%) of Port Moody's recent immigrants spoke non-official languages most often at home, slightly lower than Metro Vancouver's regional level of 62.1%, but significantly higher than 43.5% of the City's total immigrant population.
- 22.5% of Port Moody's recent immigrants spoke Chinese (Mandarin, Cantonese and Chinese n.o.s. combined) most often at home, nearly double the percentage of its total immigrants (12.2%).
- In the 2016 Census, Port Moody also recorded a decline in the percentage of non-official language speaking immigrants, compared to the previous census period when 66.6% of recent immigrants and 45.4% of total immigrants spoke non-official languages often at home in 2011.



LANGUAGE TRENDS (2001 - 2016) - BY % OF POPULATION WITH ENGLISH ONLY AS A MOTHER TONGUE

- Although about 15% higher than Metro Vancouver's level, the proportion of Port Moody's residents who spoke English only as their mother tongue continued its decline from 75.8% in 2001 to 67.6% in 2016, similar to Metro Vancouver's decline from 60.2% to 54.0%.



LANGUAGES SPOKEN MOST OFTEN AT WORK (CENSUS 2016) BY % OF IMMIGRANT POPULATION AGED 15 YEARS AND OVER

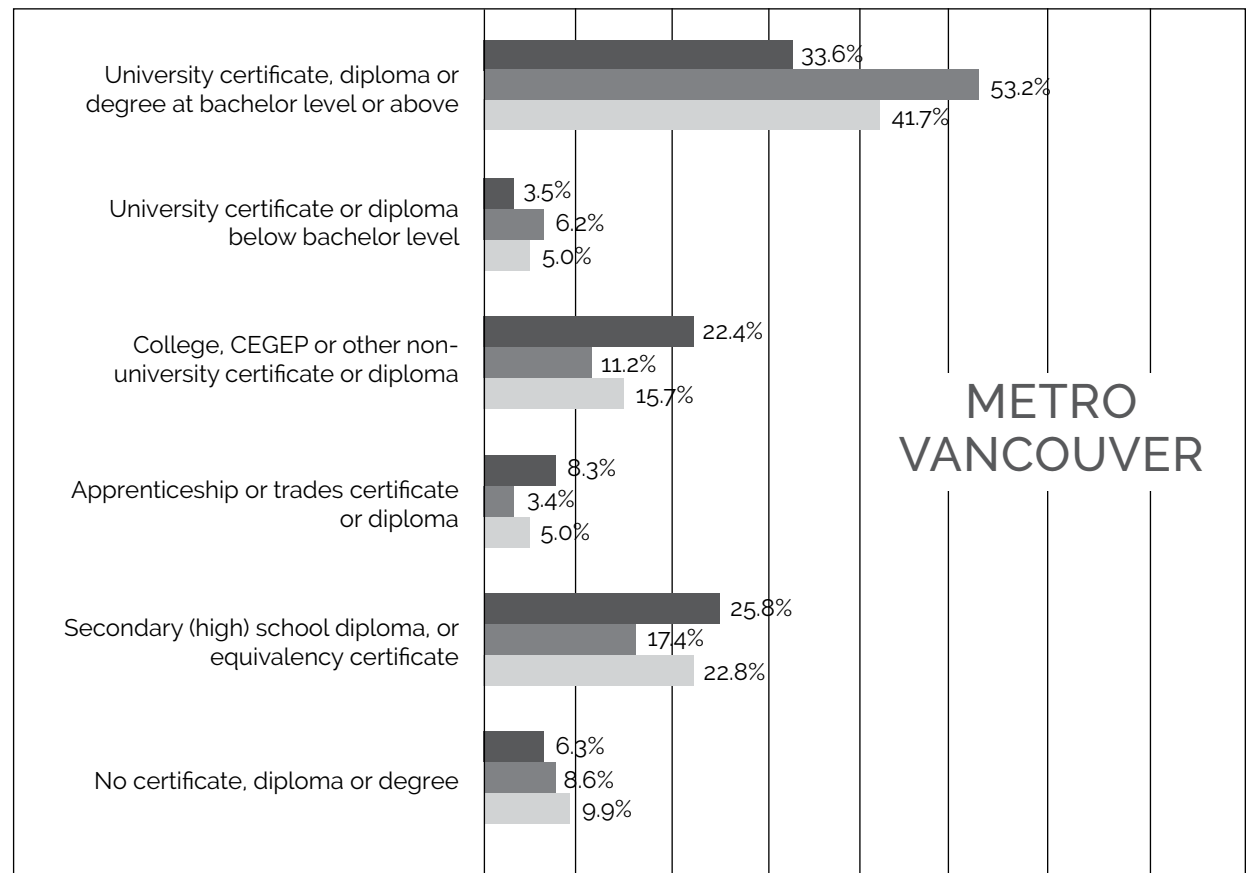
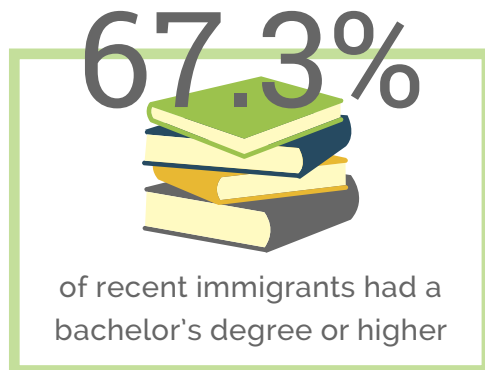
- In 2016, 14.9% of Port Moody's recent immigrants spoke non-official languages often at work, notably smaller than Metro Vancouver's regional level of 17.8%, but more than double Port Moody's 2011 rate of 6.2%.
- Compared with the previous census period (NHS 2011), Mandarin (9.7%) surpassed Korean (4.5%) and became the most often non-official language spoken at work by Port Moody's recent immigrants in 2016.

Port Moody				Metro Vancouver	
Total Immigrants		Recent Immigrants		Recent Immigrants	
Non-Official Languages	6.0%	Non-Official Languages	14.9%	Non-Official Languages	17.8%
Korean	2.9%	Mandarin	9.7%	Mandarin	6.9%
Mandarin	2.0%	Korean	4.5%	Punjabi (Panjabi)	4.5%
Cantonese	0.4%	N/A	N/A	Cantonese	2.4%

EDUCATION LEVEL (CENSUS 2016)

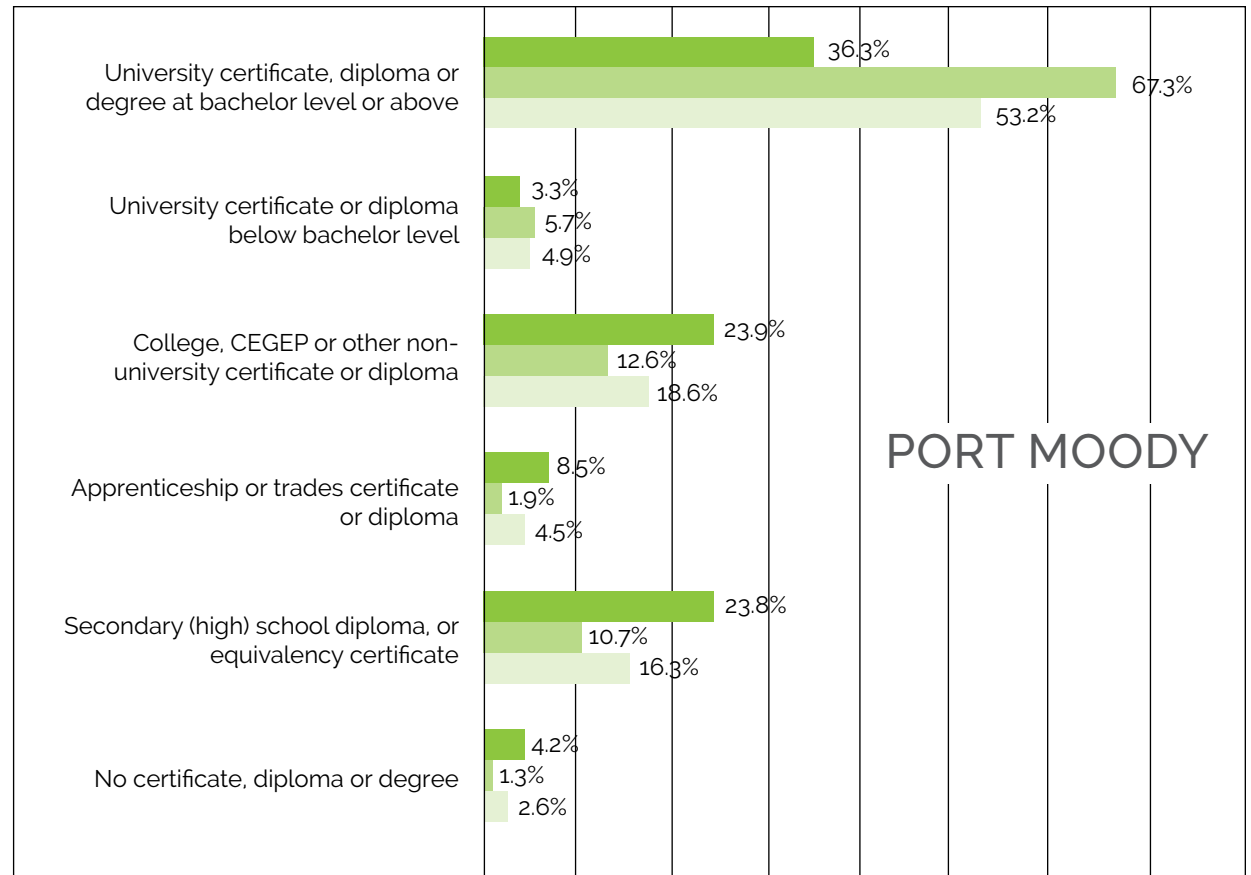
HIGHEST LEVEL OF EDUCATION - BY % OF POPULATION AGED 25 TO 64 YEARS

- In 2016, 67.3% of Port Moody's recent immigrants between the ages of 25 to 64 had a bachelor's degree or higher, significantly higher than the proportion of their Canadian-born counterparts (36.3%) and total immigrants (53.2%), and also much higher than Metro Vancouver's recent immigrants (53.2%).
- Port Moody's Canadian-born population reported higher levels of educational attainment in apprenticeship and trades as well as in the high school or equivalency categories. While immigrants and recent immigrants reported higher levels of educational attainment in college and university certificates, diplomas or degrees.



- % of Canadian Born - Metro Vancouver
- % of Recent Immigrants - Metro Vancouver
- % of Total Immigrants - Metro Vancouver

- Compared to the previous census period (2006-2011), Port Moody saw significant growth in its college and university educated population, especially within the recent immigrant population. In 2011, the corresponding percentages of those with a bachelor's degree or higher were: 58% of recent immigrants, 50.2% of total immigrants and 31.6% of the Canadian-born population.
- Like Port Moody, Metro Vancouver has a greater proportion of college and university educated immigrants compared to its Canadian-born counterparts. 53.2% of recent immigrants and 41.7% of total immigrants had a bachelor's degree or higher, compared to 33.6% of the Canadian born population.

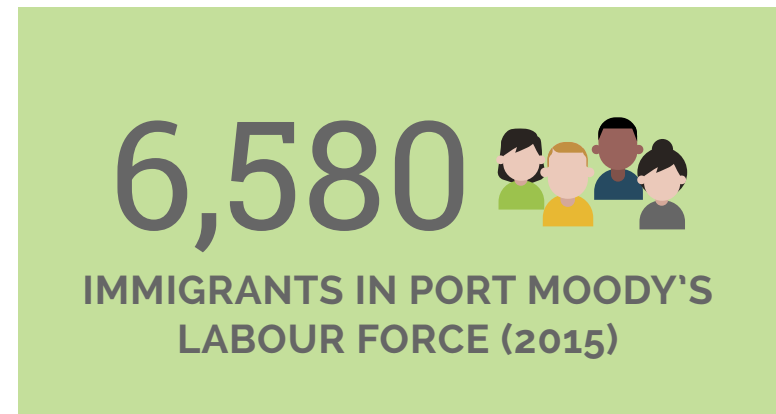


- % of Canadian Born - Port Moody
- % of Recent Immigrants - Port Moody
- % of Total Immigrants - Port Moody

LABOUR FORCE ACTIVITY (CENSUS 2016)

EMPLOYMENT / UNEMPLOYMENT RATES IN 2015 FOR POPULATION AGED 15 YEARS AND OVER

	Port Moody			Metro Vancouver		
	Canadian Born	Total Immigrants	Recent Immigrants	Canadian Born	Total Immigrants	Recent Immigrants
Total population aged 15 years and over	17,180	10,220	1,005	1,112,275	952,340	122,615
In the labour force	12,820	6,580	650	769,910	585,610	80,025
Participation rate (%)	74.6%	64.4%	64.7%	69.2%	61.5%	65.3%
Employment rate (%)	70.8%	60.8%	59.2%	65.3%	57.8%	59.2%
Unemployment rate (%)	5.0%	5.6%	8.5%	5.7%	5.9%	9.3%



- In 2015 there were 6,580 immigrants and 650 recent immigrants in Port Moody's labour force. Immigrants and recent immigrants represented 33.9% and 3.4% of the City's labour force respectively, compared to the corresponding rates of 31.7% and 4.6% in 2010 (NHS 2011).
- 8.5% of Port Moody's recent immigrants were unemployed in 2015, significantly higher than its total immigrant labour force (5.6%) and their Canadian-born counterparts (5.0%). This represented a marginal decrease in unemployment from the last census period (9%) for recent immigrants (NHS 2011).
- Compared to the Metro Vancouver region, Port Moody had slightly better unemployment rates in 2015: 5.6% vs. 5.9% for total immigrants, 8.5% vs. 9.3% for recent immigrants, and 5.0% vs. 5.7% for its Canadian-born population.

OCCUPATION DISTRIBUTION (CENSUS 2016)

DISTRIBUTION OF TOP TEN OCCUPATIONS - BY % LABOUR FORCE POPULATION AGED 15 YEARS AND OVER

	Port Moody				Metro Vancouver		
	Canadian Born	Total Immigrants	Recent Immigrants		Canadian Born	Total Immigrants	Recent Immigrants
54 Professional, scientific and technical services	9.3%	13.7%	18.5%	44-45 Retail trade	11.1%	11.0%	12.2%
44-45 Retail trade	9.1%	11.3%	12.3%	62 Health care and social assistance	9.6%	10.9%	7.7%
62 Health care and social assistance	9.2%	10.7%	10.0%	54 Professional; scientific and technical services	9.8%	9.9%	10.8%
61 Educational services	11.3%	7.1%	6.2%	72 Accommodation and food services	7.6%	9.0%	13.0%
23 Construction	8.5%	7.0%	6.9%	31-33 Manufacturing	5.1%	7.7%	7.2%
72 Accommodation and food services	5.9%	6.2%	7.7%	23 Construction	7.8%	6.5%	7.7%
31-33 Manufacturing	4.1%	5.6%	3.1%	48-49 Transportation and warehousing	5.2%	6.0%	3.9%
52 Finance and insurance	4.5%	5.6%	3.8%	61 Educational services	8.5%	5.8%	4.7%
81 Other services (except public administration)	4.4%	5.3%	5.4%	52 Finance and insurance	4.6%	5.1%	3.7%
41 Wholesale trade	5.0%	4.2%	6.2%	56 Administrative and support; waste management and remediation services	4.1%	5.0%	5.8%

- Just as in the previous census period, professional scientific and technical services, retail trades, and health care and social assistance remained the top three occupational sectors for immigrants in Port Moody and Metro Vancouver: 35.7% of the City's immigrants and 31.8% of the region's immigrants worked in these three sectors.
- Professional, scientific and technical services ranked as the top occupational sector for Port Moody's recent immigrants. 18.5% of recent immigrants worked in this sector, notably higher than for Metro Vancouver's recent immigrants (10.8%), as well as Port Moody's total immigrants (13.7%) and Canadian-born population (9.3%)

INCOME (CENSUS 2016)

TOTAL INCOME IN 2015 FOR INDIVIDUALS AGED 15 YEARS AND OVER

	Port Moody			Metro Vancouver		
	Total Population	Total Immigrants	Recent Immigrants	Total Population	Total Immigrants	Recent Immigrants
Population aged 15 years and over	27,405	10,215	1,005	2,064,585	952,340	122,620
Average income \$	\$55,567	\$45,733	\$33,600	\$46,821	\$40,437	\$28,845
Median income \$	\$42,790	\$31,617	\$20,583	\$32,612	\$27,642	\$19,625
Prevalence of low income in 2015, based on after-tax low-income measure (%)	11.5%	18.8%	30.7%	16.5%	20.5%	33.5%

- In 2015, the median income of Port Moody's recent immigrant population was \$20,583, notably less than the median income of \$31,617 for the immigrant population and \$42,790 for the City's total population.
- In general, Port Moody's labour force earned notably more than their counterparts in Metro Vancouver, while recent immigrants displayed the smallest difference. In 2015, the median income of Port Moody's total population was 31.2% more than their counterparts in Metro Vancouver, while the City's total immigrants earned 14.4% more than Metro Vancouver's immigrants, and its recent immigrants earned 4.9% more than those in the region.
- Port Moody's immigrants, especially its recent immigrants earned less in 2015 than in 2010, but the City's Canadian-born population's income increased over the same period. Census 2016 shows that Port Moody's recent immigrants earned 12% less than their median income (\$23,316) in 2010, total immigrants earned 2% less than the 2010 level (\$31,214), but Port Moody's total population gained a 12% increase from \$38,151 in 2010.
- Census 2016 shows that recent immigrants were more likely to live on a low income. In 2015, 30.7% of Port Moody's recent immigrant population aged 15 years and over were in the low-income bracket, compared with 18.8% of the total immigrant population and 11.5% of the City's total population. Overall, Port Moody had a slightly smaller proportion of low-income residents than Metro Vancouver.
- Port Moody has seen a small reduction in the percentages of low-income residents since 2011 when 32.9% of recent immigrants, 19.7% of immigrants and 13.1% of the total population lived on a low income.

EMPLOYMENT INCOME IN 2015 OF INDIVIDUALS AGED 15 YEARS AND OVER WHO WORKED FULL YEAR, FULL TIME

	Port Moody			Metro Vancouver		
	Total Population	Total Immigrants	Recent Immigrants	Total Population	Total Immigrants	Recent Immigrants
Population aged 15 years and over	27,400	10,220	1,000	2,064,615	952,340	122,620
Population who worked full year, full time and with employment income in 2010	9,975	3,100	225	637,390	258,940	25,630
Average income \$	\$78,578	\$69,884	\$60,163	\$67,916	\$61,567	\$53,737
Median income \$	\$65,867	\$59,705	\$50,298	\$54,955	\$49,407	\$41,559

- About 22.5% of Port Moody's recent immigrants worked full time for a full year with employment income in 2015, significantly lower than 30.3% of the City's total immigrants and 36.4% of the its total labour force.
- In 2015, Port Moody's had a larger proportion of full year and full-time labour force participants than Metro Vancouver where 20.9% of the region's recent immigrants, 27.2% of its total immigrants and 30.9% of its total population worked full time and for a full year in 2015.
- Compared with the previous census period, there were fewer full time job opportunities for Port Moody's residents. NHS 2011 reported that 27.8% of recent immigrants, 31.9% of immigrant workers and 37.6% of the total labour force worked full time and for a full year in 2010.
- In 2015, Port Moody's recent immigrants who worked full time and for a full year earned \$50,298, about 23.7% less than the median income of the City's total full-time labour force (\$65,867). Port Moody's total full-time immigrant workers made about 10% less than the City's total population.
- Between 2010 and 2015, Port Moody's immigrant labour force experienced a marginal increase in their employment income: 2.9% growth for total immigrants and 0.4% for recent immigrant workers. In contrast, Port Moody's total labour force showed an increase of 11.8% in their employment income.

ABOUT NEWTOBC

NewToBC

NewToBC partners with libraries and community service providers to develop, deliver, and promote services and resources that support immigrant settlement and integration in communities across the province. NewToBC uses innovative approaches and emerging technologies to deliver three key activities.

1. NewToBC operates the **Library Champions Project** in communities across Metro Vancouver and the Fraser Valley.
2. NewToBC develops, updates and disseminates a variety of library and settlement information resources for new immigrants.
3. NewToBC uses social media platforms to share information about settlement resources, volunteer opportunities, and no cost workshops, training and community events of interest to new immigrants in Southwest BC. Go to our **Facebook**, **Twitter** and **LinkedIn** feeds to find out more.

NewToBC is managed by **Public Library InterLINK**. The project represents the eighteen public library systems in the Public Library InterLINK federation. The project was established by the Government of British Columbia in 2012. NewToBC is currently funded through a Contribution Agreement with **Immigration, Refugees and Citizenship Canada** (IRCC).

Copyright © 2018: NewToBC: The Library Link For Newcomers and Public Library InterLINK



Funded by:

Financé par :



Immigration, Refugees
and Citizenship Canada

Immigration, Réfugiés
et Citoyenneté Canada