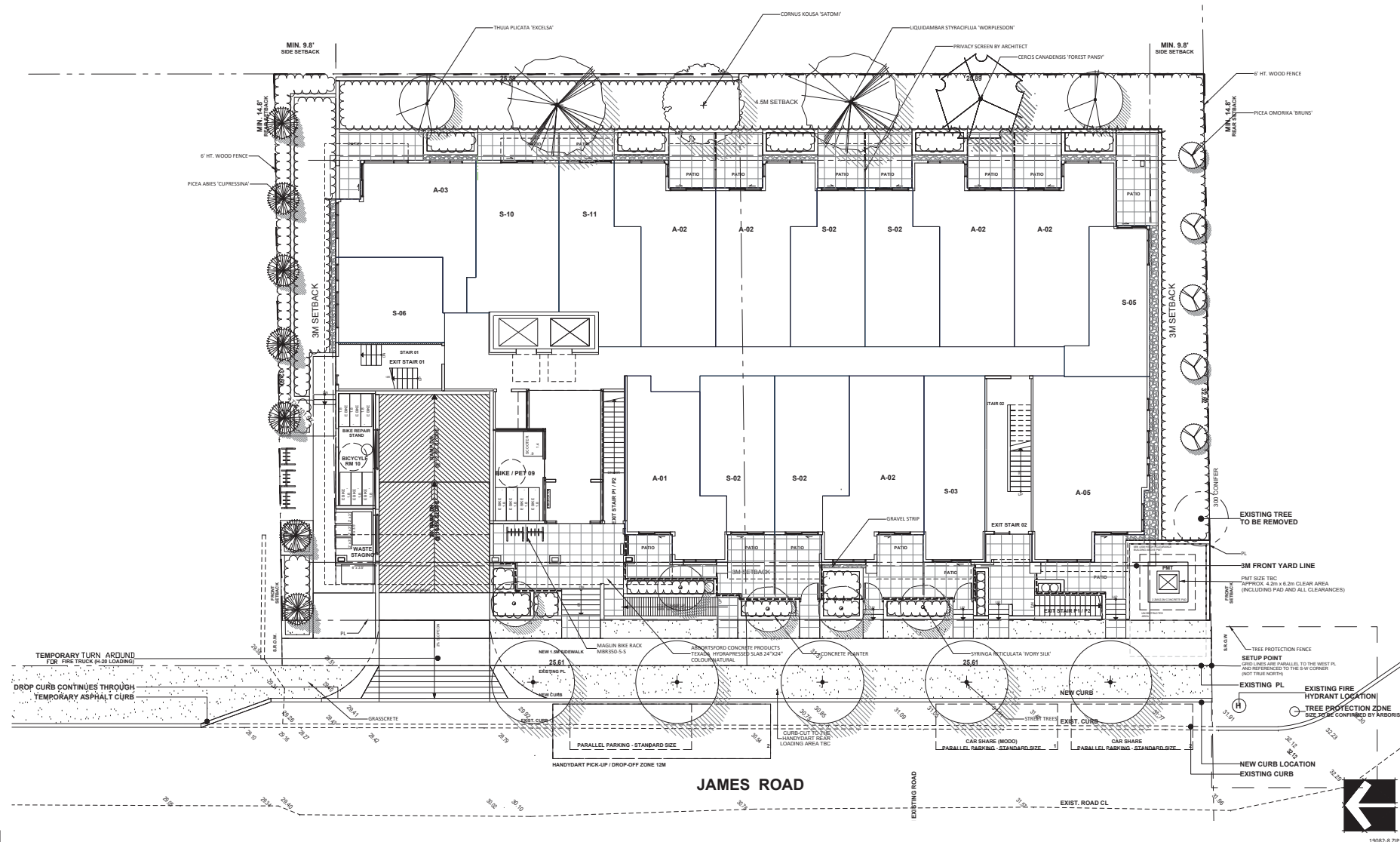


[illegible][illegible]

©Copyright reserved. This drawing and design is the property of PMG Landscape Architects and may not be reproduced or used for other projects without their permission.

pmg
LANDSCAPE
ARCHITECTS
Suite C100 - 4185 Still Creek Drive
Burnaby, British Columbia, V5C 6G8
p: 604 294-0011 • f: 604 294-0022

SEN:

NO.	DATE	REVISION DESCRIPTION	DR
7	21.MAR.23	NEW SITE PLAN	JR
6	21.MAR.16	NEW ROOF PLAN	MM
5	20.DEC.21	NEW SITE PLAN	JR
4	20.DEC.16	NEW SITE PLAN	JR
3	20.APR.15	NEW SITE PLAN	MM
2	19.O8.20	UPDATE PLANTING	RJ
1	19.07.24	UPDATE SITE PLAN	MC

CLIENT:

PROJECT:

APARTMENT

148 - 154 JAMES ROAD
PORT MOODY, BC

DRAWING TITLE:

**GROUND LEVEL
LANDSCAPE PLAN**

DATE: 19 JUN 18 DRAWING NUMBER:
SCALE: 1/8"=1'-0"
DRAWN: RJ
DESIGN: RJ
CHKD: MCY

L1

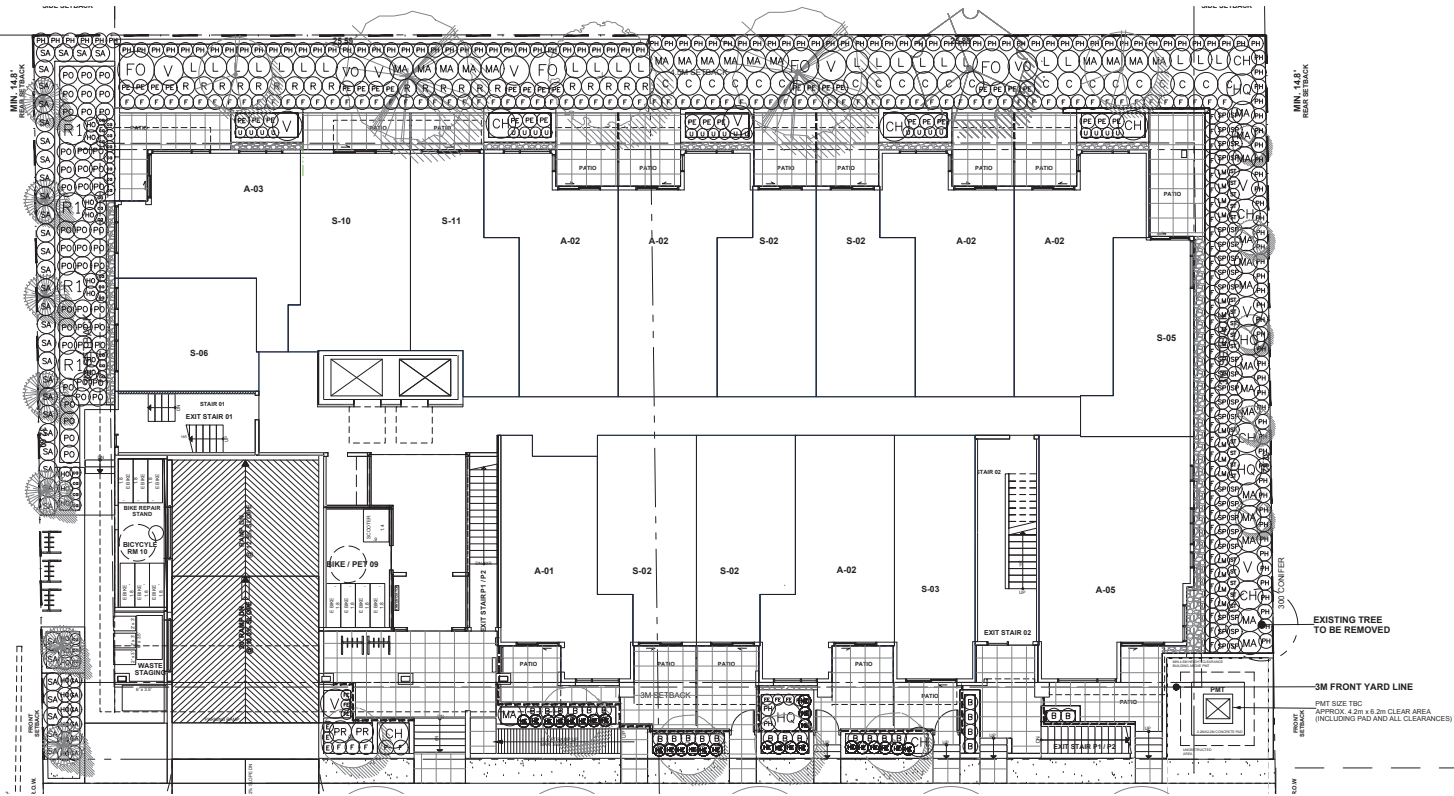
OF 4

PMG PROJECT NUMBER

19-082

SEAL:

PLANT SCHEDULE				PMG PROJECT NUMBER: 19-082
KEY	QTY	BOTANICAL NAME	COMMON NAME	PLANTED SIZE / REMARKS
SHRUB				
(B)	24	BUXUS MICROPHYLLA 'WINTER GEM'	LITTLE LEAF BOX	#3 POT: 40CM
(C)	9	CHOISYA TERMINATA 'SUNDANCE'	MEXICAN MOXO ORANGE	#3 POT: 50CM
(H)	21	CORNUS SERICEA 'KELSEY'	KELSEY RED OSIER DOGWOOD	#3 POT: 80CM
(O)	4	FOTHERGILLA MAJOR 'MOUNT AIRY'	MOUNT AIRY FOTHERGILLA	#3 POT: 60CM
(M)	4	HYDRANGEA QUERCIFOLIA	GAULLEAF HYDRANGEA	#3 POT: 80CM
(M)	30	MAHONIA AQUIFOLIUM	OREGON GRAPE	#3 POT: 50CM
(M)	127	PHYSCOCARPUS CAPITATUS	PACIFIC NINEBARK	#3 POT: 50CM
(R)	2	PRUNUS LAUROCESTRUS 'OTTO LUYKEN'	OTTO LUYKEN LAUREL	#3 POT: 50CM
(R)	20	RHODODENDRON 'BOW BELLS'	RHODODENDRON	#3 POT: 50CM
(R)	4	RIEBS SANGUNEUM 'YONG EDWARD VII'	RED FLOWERING CURRANT	#3 POT: 80CM
(S)	44	SPRAEA JAPONICA 'LITTLE PRINCESS'	LITTLE PRINCESS SPIRAEA, PINK	#3 POT: 40CM
(M)	36	SYMPHORICARPOS ALBUS	SNOWBERRY	#3 POT: 50CM
(W)	2	VACCINIUM OVATUM 'THUNDERBIRD'	EVERGREEN HUCKLEBERRY	#3 POT: 60CM
(V)	10	VIBURNUM DAVIDI	DAVID'S VIBURNUM	#3 POT: 50CM
TWOSS				
(E)	26	CAREX OSHMENSIS 'EVERGOLD'	EVERGOLD JAPANESE SEDGE	#1 POT
(E)	7	FESTUCA OVINA 'GLAUCA'	BLUE FESCUE	#1 POT
(E)	35	POINSETTIA ALAPECUROIDES 'HAMELIN'	DWARF FOUNTAIN GRASS	#1 POT
(E)	20	STIPA TENUISSIMA	MEXICAN FEATHER GRASS	#1 POT
PERENNIAL				
(M)	118	FRAGARIA CHILOENSIS	BEACH STRAWBERRY	15CM POT
(M)	27	HEMEROCALLIS 'WHITE TEMPTATION'	DAYLILY, WHITE	#1 POT: 20CM
(M)	20	HOSTA 'PATRIOT'	HOSTA, GREEN AND WHITE, VARIEGATED	#1 POT: 1 EYE
(M)	16	LAVENDULA ANGUSTIFOLIA 'MUNSTEAD'	ENGLISH LAVENDER, COMPACT, VIOLET-BLUE	#1 POT
TWOSS				
(U)	22	ARCTOSTAPHYLOS UVA-URSI	KINKKINKNICK	#1 POT: 20CM
(E)	3	ERICA CARNEA 'SPRINGWOOD PINK'	WINTER HEATH, PINK	#1 POT
(L)	6	GAULTHERIA SHALLOON	SARAL	#1 POT: 20CM
(L)	22	LONICERA PILEATA	PRIVET HONEYSUCKLE	#2 POT: 25CM
(M)	45	POLYSTICHUM MUNITUM	WESTERN SWORD FERN	#1 POT: 25CM
NOTES: * PLANT SIZES IN THIS LIST ARE SPECIFIED ACCORDING TO THE BC LANDSCAPE STANDARD AND CANADIAN LANDSCAPE STANDARD, LATEST EDITION. CONTAINER SIZES SPECIFIED AS PER CNLA STANDARD. BOTH PLANT SIZE AND CONTAINER SIZE ARE THE MINIMUM ACCEPTABLE SIZES. * REFER TO SPECIFICATIONS FOR DEFINED CONTAINER MEASUREMENTS AND OTHER PLANT MATERIAL REQUIREMENTS. * SEARCH AND REVIEW MAKE PLANT MATERIAL AVAILABLE FOR OPTIONAL REVIEW BY LANDSCAPE ARCHITECT AT SOURCE OF SUPPLY. AREA OF SEARCH TO INCLUDE LOWER MAINLAND AND FRASER VALLEY. * SUBSTITUTIONS: OBTAIN WRITTEN APPROVAL FROM THE LANDSCAPE ARCHITECT PRIOR TO MAKING ANY SUBSTITUTIONS TO THE SPECIFIED MATERIAL. UNAPPROVED SUBSTITUTIONS WILL BE REJECTED. ALLOW A MINIMUM OF FIVE DAYS PRIOR TO DELIVERY FOR REQUEST TO SUBSTITUTE. SUBSTITUTIONS ARE SUBJECT TO BC LANDSCAPE STANDARD AND CANADIAN LANDSCAPE STANDARD. DEFINITION OF CONDITIONS OF AVAILABILITY: ALL LANDSCAPE MATERIAL AND WORKMANSHIP MUST MEET OR EXCEED BC LANDSCAPE STANDARD AND CANADIAN LANDSCAPE STANDARD LATEST EDITION. ALL PLANT MATERIAL MUST BE PROVIDED FROM CERTIFIED DISEASE FREE NURSERY.				



7	21 MAR 21	NEW SITE PLAN	JR
6	21 MAR 21	NEW SITE PLAN	MR
5	20 DEC 21	NEW SITE PLAN	JR
4	20 DEC 21	NEW SITE PLAN	JR
3	20 APR 21	NEW SITE PLAN	MR
2	15 DEC 20	UPDATE PLANNING	JR
1	15 DEC 20	UPDATE SITE PLAN	NCL

NO. DATE REVISION DESCRIPTION DR.

CLIENT:

PROJECT:

APARTMENT

**148 - 154 JAMES ROAD
PORT MOODY, BC**

DRAWING TITLE:

**GROUND LEVEL
SHRUB PLAN**

DATE: 19 JUN 18

DRAWING NUMBER:

SCALE: 1/8"=1'-0"

DRAWN: JR

DESIGN: JR

CHKD: MCY

PMG PROJECT NUMBER:

19-082



L2

OF 4

CLIENT:

APARTMENT
148 - 154 JAMES ROAD
PORT MOODY, BC

ROOF LANDSCAPE PLAN

OF 4



***NOTES:** - PLANT SPECIES IN THIS LIST ARE SPECIFIED ACCORDING TO THE BC LANDSCAPE STANDARD AND CANADIAN LANDSCAPE STANDARD, LATEST EDITION. CONTAINER SIZES - SPECIFIED AS PER PLA STANDARD; BOTH PLANT SIZE AND CONTAINER SIZE ARE THE MINIMUM ACCEPTABLE SIZES - *REFER TO SPECIFICATIONS FOR DEFINED CONTAINER TYPES. ALL PLANTS MUST BE GROWN IN A NURSERY OR PROPAGATION FACILITY THAT IS REGISTERED WITH THE BC MINISTRY OF FORESTRY, RANGE & COWBOY AT THE SOURCE OF SUPPLY. AREA OF SEARCH TO INCLUDE LOWER MAINLAND AND FRASER VALLEY - *SUBSTITUTIONS: OBTAIN WRITTEN APPROVAL FROM THE LANDSCAPE ARCHITECT PRIOR TO MAKING ANY SUBSTITUTIONS TO THE SPECIFIED MATERIAL. UNAPPROVED SUBSTITUTIONS WILL BE REJECTED. ALLOW A MINIMUM OF FIVE DAYS PRIOR TO DELIVERY FOR THE LANDSCAPE ARCHITECT TO REVIEW ANY PROPOSED SUBSTITUTIONS. *PLANT AVAILABILITY: ALL PLANTS MUST BE AVAILABLE AT THE TIME OF ORDER. *PLANT AVAILABILITY: ALL LANDSCAPE MATERIAL AND WORKSMANSHIP MUST MEET OR EXCEED BC LANDSCAPE STANDARD AND CANADIAN LANDSCAPE STANDARD LATEST EDITION. ALL PLANT MATERIAL MUST BE PROVIDED FROM CERTIFIED DISEASE FREE NURSERY.



pmg
LANDSCAPE ARCHITECTS
Suite C100 - 4185 Still Creek Drive
Burnaby, British Columbia, V5C 6G9
p: 604 294-0011 ; f: 604 294-0022

[illegible]PMG PROJECT NUMBER: 19-082