

PLANT SCHEDULE M2 JOB NUMBER: 18-078

KEY	QTY	BOTANICAL NAME	COMMON NAME	PLANTED SIZE / REMARKS
1	4	ACER PALMATUM 'BLOODGOOD'	JAPANESE MAPLE	5 H FT, B&B UPRIGHT FORM 3M H&B
2	4	MAGNOLIA x SALAYT	MAGNOLIA	3M H&B
3	2	FRAX CONORTA	SHORE PINE	3M H&B
4	10	FRAXUS SERRILATA 'HANOIOWANA'	HANOIOWANA CHERRY	10M CAL, 1.5M STD, B&B
5	6	STYRAX JAPONICUS	JAPANESE SIKKOOB	3M CAL, OVER 3M, B&B
144	144	EBUUS MICROPHYLLOA var. 'koreana 'Elahe'	HEADING RING BOWWOOD	12 POT, 25CM #8 POT, 40CM
11	11	CAMELLIA SASANGA 'SHISHI OASHIRA'	SHISHI OASHIRA CAMELLIA	12 POT, 40CM #8 POT, 40CM
13	13	DIERVILLA LONGICA	DOCK HORTENSIA	12 POT, 40CM #8 POT, 30CM
17	17	HOSTA 'HARBOT HOON'	AUGUST HOON HOSTA	12 POT, SUN TOLLERANT
11	11	HOSTA 'HARBOT HOON'	AUGUST HOON HOSTA	12 POT, SUN TOLLERANT
22	22	HYDRANGEA QUERCIFOLIA	QUERCIFOLIA HYDRANGEA	12 POT, 30CM #8 POT, 80CM
22	22	ITEA VIRGINICA	VIRGINIA SHEETPINE	12 POT, 30CM #8 POT, 80CM
22	22	PRINOSPERMUM 'MAY DAY'	PRINOSPERMUM 'MAY DAY'	12 POT, 30CM #8 POT, 80CM
61	61	SARGOCOCOA 'HOOPERIANA' 'RUCIFOLIA'	FRAGRANT SARGOCOCOA	12 POT, 40CM
36	36	TAXUS BACATA	ENGLISH YEW	12 POT, 30CM #8 POT, 80CM, 1.5M B&B
5	5	VERBENA DAVIDI	DAVID'S VERBENA	12 POT, 30CM #8 POT, 30CM
13	13	VERBENA x BODANTHESE	FRAX DAVID VERBENA	12 POT, 40CM #8 POT, 60CM
PERENNIAL	144	LAVENDULA ANGSTIFOLIA	ENGLISH LAVENDER	12 POT
60	60	ARGENTOPHYLLIS (INA-IRSI)	KINCKRACK	12 POT, 20CM
226	226	ASplenUM CAMERENSE	CANADIAN SNEER	12 POT, 20CM
181	181	ATHYRIUM 'MONGIM' PICTUM 'REGAL RED'	REGAL RED JAPANESE PAINTED FERN	12 POT, 30CM
271	271	OXALIS OREBANA	REINWOOD SORREL	12 POT

NOTES: * PLANT SIZES IN THIS LIST ARE SPECIFIED ACCORDING TO THE BC LANDSCAPE STANDARD, LATEST EDITION. CONTAINER SIZES SPECIFIED AS PER CITY STANDARDS. BOTH PLANT SIZE AND CONTAINER SIZE ARE THE MINIMUM ACCEPTABLE SIZES. * REFER TO REGULATIONS FOR DEFINED CONTAINER MEASUREMENTS AND OTHER PLANT MATERIAL REQUIREMENTS. * SEARCH AND REVIEW MAKE PLANT MATERIAL AVAILABLE FOR OPTIONAL REVIEW BY LANDSCAPE ARCHITECT AT SOURCE OF SUPPLY. * AREA OF SEARCH TO INCLUDE LOWER MAINLAND AND PACIFIC WILDCOAST. * SUBSTITUTIONS OBTAIN WRITTEN APPROVAL FROM THE LANDSCAPE ARCHITECT PRIOR TO MAKING ANY SUBSTITUTIONS TO THE SPECIFIED MATERIAL. UNAPPROVED SUBSTITUTIONS WILL BE REJECTED. ALLOW A MINIMUM OF FIVE DAYS PRIOR TO DELIVERY FOR REQUEST TO SUBSTITUTE. SUBSTITUTIONS ARE SUBJECT TO BC LANDSCAPE STANDARD - DEFINITION OF CONDITIONS OF AVAILABILITY.

ALL PLANT MATERIAL MUST BE PROVIDED FROM CERTIFIED DISEASE FREE NURSERY. PROVIDE CERTIFICATION UPON REQUEST.

Copyright reserved. This drawing and design is the property of M2 Landscape Architects and may not be reproduced or used for other projects without their permission.



#220 - 26 Lorne Mews
 New Westminster, British Columbia
 V3M 3L7
 Tel: 604.553.0044
 Fax: 604.553.0045
 Email: office@m2la.com



04	20/10/18	ISSUED FOR CIP	JS
05	20/01/19	CONCEPT DESIGN ISSUED	GL/JS
02	16/01/18	REV. AND PERM. ARCH. PLAN	JS
01	16/01/18	CONCEPT DESIGN ISSUED	JS

NO. DATE REVISION DESCRIPTION DR.

SEAL:

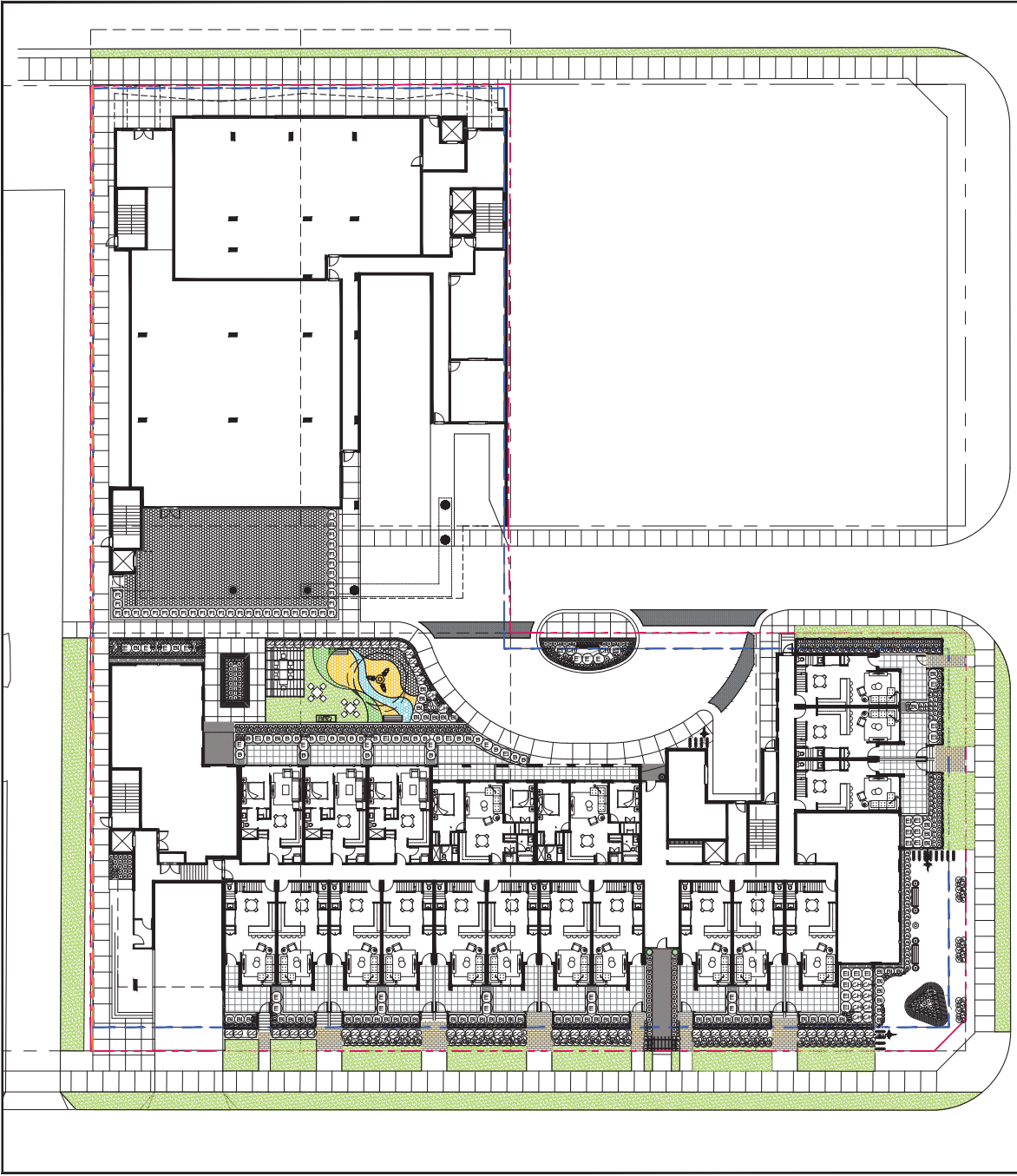
PROJECT:
MIX USE DEVELOP.
 87. JOHNSTON ST., GEORGE ST., BULLER ST.,
 PORT MOODY, B.C.

DRAWING TITLE:
TREE PLAN LEVEL 1

DATE: 20/10/18 DRAWING NUMBER:
 SCALE: 1/8"=1'-0"
 DRAWN: JS
 DESIGN: JS
 CHECKED: NM
 M2LA PROJECT NUMBER: 18078

L4

CF 20



PLANT SCHEDULE M2 JOB NUMBER: 18-078

KEY	QTY	BOTANICAL NAME	COMMON NAME	PLANTED SIZE / REMARKS
4		ACER PALMATH 'BLOODWOOD'	JAPANESE MAPLE	3 H HT, B&B, UPRIGHT FORM
1		MAGNOLIA x 'BALAXY'	MAGNOLIA	3H HT, B&B
2		FRAX COCOTIA	SHORE PINE	2H HT, B&B
12		FRAX SERRULATA 'AHANGAHA'	AHANGAHA CHERRY	1/4" CAL, 1.5M STD, B&B
6		STYRAC JAPONICUS	JAPANESE DOGWOOD	3/4" CAL, OVER 2H B&B
144		BIUNE MICROPHYLLA var. Kawanoe Beles'	HELDING KING BUCKWOOD	42 POT, 25CM H9 POT, 40CM
71		CAPELLA SAGANNA 'SHEI SAGANNA'	SHEI SAGANNA CAPELLA	42 POT, 40CM H9 POT, 60CM
10		DIERYLLA LONGICRUA	BUSH HONEYBUCKLE	42 POT, 40CM H9 POT, 50CM
41		HOSTA 'ANGUST MOON'	ANGUST MOON HOSTA	48 POT, 58H TOLLERANT
41		HOSTA 'ANGUST MOON'	ANGUST MOON HOSTA	48 POT, 58H TOLLERANT
22		HYDRANEA BERGIFOLIA	CHALKLEAF HYDRANEA	42 POT, 50CM H9 POT, 20CM
22		ITEA VIRGINICA	VIRGINIA SHEETSPIRE	42 POT, 50CM H9 POT, 80CM
22		IRIGODONDRON 'MAY DAY'	IRIGODONDRON RED HAY	42 POT, 50CM H9 POT, 80CM
41		SARGOLGGA HOORERANA 'MUSIFOLIA'	FRAGRANT SARGOLGGA	48 POT, 40CM
36		YARIS BACCATA	ENGLISH YEW	42 POT, 50CM H9 POT, 80CM 1.5M B&B
10		VERBENA DAVIDS	DAVIDS VERBENA	42 POT, 50CM H9 POT, 50CM
12		VERBENA X BOONWITENSE	PINK DAN VERBENA	42 POT, 40CM H9 POT, 60CM
PERENNIAL		144 LAVENDULA ANGIUSTIFOLIA	ENGLISH LAVENDER	48 POT
60		ARGYTOFALLOS IVA-IRSI	KIMBICKRICK	48 POT, 20CM
226		ASARUM CANADENSE	CANADIAN GINGER	48 POT, 20CM
101		ANTHURUM MORGANI 'PICTUM' REGAL RED'	REGAL RED JAPANESE PAINTED FERN	48 POT, 30CM
21		OVALIS OREGANA	RECKHOOD SCORREL	48 POT

NOTES: * PLANT SIZES IN THIS LIST ARE SPECIFIED ACCORDING TO THE BC LANDSCAPE STANDARD, LATEST EDITION. CONTAINER SIZES SPECIFIED AS PER DATA STANDARDS. BOTH PLANT SIZE AND CONTAINER SIZE ARE THE MINIMUM ACCEPTABLE SIZES. * REFER TO SPECIFICATIONS FOR DEFINED CONTAINER REQUIREMENTS AND OTHER PLANT MATERIAL REQUIREMENTS. * SEARCH AND REVIEW MAKE PLANT MATERIAL AVAILABLE FOR OPTIONS. REVIEW BY LANDSCAPE ARCHITECT AT SOURCE OF SUPPLY. AREA OF SEARCH TO INCLUDE LOWER MAINLAND AND FRASER VALLEY. * SUBSTITUTIONS OBTAIN WRITTEN APPROVAL FROM THE LANDSCAPE ARCHITECT PRIOR TO MAKING ANY SUBSTITUTIONS TO THE SPECIFIED MATERIAL. UNAPPROVED SUBSTITUTIONS WILL BE REJECTED. ALLOW A MINIMUM OF FIVE DAYS PRIOR TO DELIVERY FOR REQUEST TO SUBSTITUTE. SUBSTITUTIONS ARE SUBJECT TO BC LANDSCAPE STANDARD - DEFINITION OF CONDITIONS OF AVAILABILITY.

ALL PLANT MATERIAL MUST BE PROVIDED FROM CERTIFIED DISEASE FREE NURSERY. PROVIDE CERTIFICATION UPON REQUEST.

©Copyright reserved. This drawing and design is the property of M2 Landscape Architects and may not be reproduced or used for other projects without their permission.



#220 - 26 Lorne Mews
 New Westminster, British Columbia
 V3M 3L7
 Tel: 604.553.0044
 Fax: 604.553.0045
 Email: office@m2la.com



NO.	DATE	REVISION DESCRIPTION	DR.
04	2018.09	ISSUED FOR CIP	SS
05	2018.11	CONCEPT DESIGN ISSUED	GL/SS
02	REVISION	REVISED PER ARCH PLAN	SS
01	2018.08	CONCEPT DESIGN ISSUED	JS

NO. DATE REVISION DESCRIPTION DR.
 SEAL:

PROJECT:
MIX USE DEVELOP.
ST. JOHNS ST., GEORGE ST., BULLER ST.
PORT MOODY, B.C.

DRAWING TITLE:
SHRUB PLAN
LEVEL 1

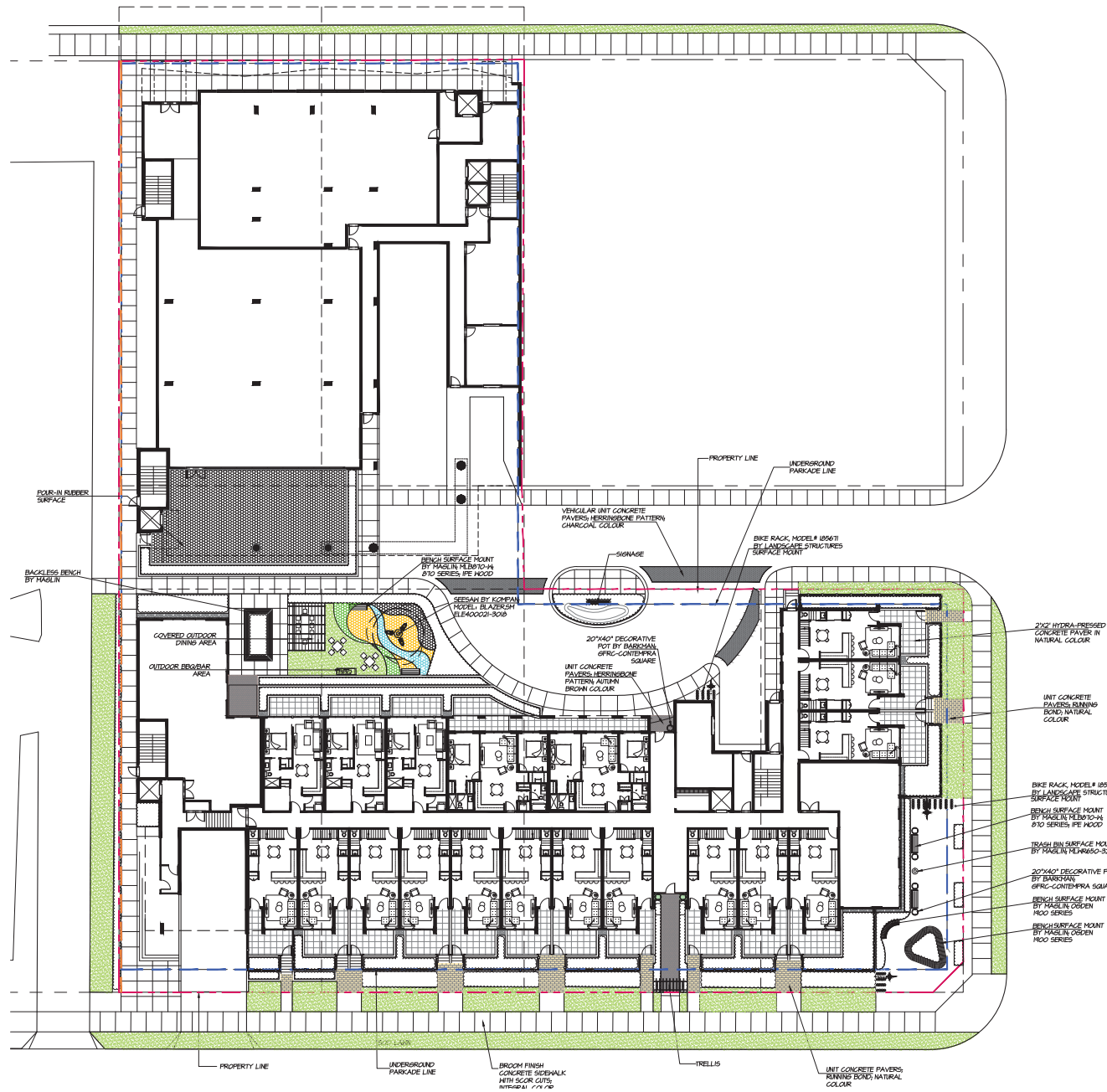
DATE: 2018.06.25 DRAWING NUMBER:
 SCALE: 1/8"=1'-0"
 DRAWN: JS
 DESIGN: JS
 CHECKED: NM **L5** OF 20

LEGEND

- PROPERTY LINE
- LINE OF W/G PARKING
- 3.5' HT. PICKET FENCE WITH GATE
- 5' HT. PERIMETER FENCE
- 6 HT. SOLID SCREEN

HARDSCAPE LEGEND

- BARKMAN HOLLAND SERIES-PEDESTRIAN CONCRETE UNITS PAVERS; HERRINGBONE PATTERN; AUTUMN BROWN COLOUR
- BARKMAN HOLLAND SERIES- PEDESTRIAN CONCRETE UNITS PAVERS; RUNNINGBONE BOND; NATURAL COLOUR
- BARKMAN HOLLAND SERIES-VEHICULAR AND PEDESTRIAN CONCRETE UNITS; CHARCOAL COLOUR; HERRINGBONE PATTERN
- 2X2' HYDRA-PRESSED CONCRETE PAVEMENT IN NATURAL COLOUR; SUPPLIER TBD
- SOD LAWN
- NORTHWEST LANDSCAPE SUPPLY AND STONE - DRAIN ROCK - BULK CLEAR CRUSHED GRAVEL 3/4"
- LANDSAFE RUBBER SURFACE - SPEC BY RECTEC INDUSTRIES
- PRECISION GREENS - ARTIFICIAL TURF
- BROOM FINISH CONCRETE SIDEWALK WITH SCOR CUTS; INTEGRAL COLOR
- BARKAMAN BRIDGEHOOD SLAB SURFACE - CEDAR BROWN COLOUR
- CONCRETE SLABS MIMIC HOOD BY BARKMAN; TERRA NOVA SLAB; TAMARACK COLOUR; MOUNTED ON 1" PEBBLES



Copyright reserved. This drawing and design is the property of M2 Landscape Architects and may not be reproduced or used for other projects without their permission.



#220 - 26 Lorne Mews
 New Westminster, British Columbia
 V3M 3L7
 Tel: 604.553.0044
 Fax: 604.553.0045
 Email: office@m2la.com



NO.	DATE	REVISION DESCRIPTION	DR.
04	2019.06.25	ISSUED FOR CIP	JS
03	2019.06.25	CONCEPT DESIGN ISSUED	GL/SS
02	2019.06.25	REV. AND PER. ARCH. PLAN	SS
01	2019.06.25	CONCEPT DESIGN ISSUED	JS

PROJECT:
MIX USE DEVELOP.
 ST. JOHNS ST, GEORGE ST., BULLER ST.
 PORT MOODY, B.C.

DRAWING TITLE: HARDSCAPE PLAN LEVEL 1	
DATE: 2019.06.25	DRAWING NUMBER:
SCALE: 1/8"=1'-0"	L6
DRAWN: JS	DESIGN: JS
CHKD: NM	CF 20
M2LA PROJECT NUMBER:	18078



#220 - 26 Lorne Mews
 New Westminster, British Columbia
 V3M 3L7
 Tel: 604.553.0044
 Fax: 604.553.0045
 Email: office@m2la.com



04	20/10/19	ISSUED FOR OIP	SS
05	20/01/20	CONCEPT DESIGN ISSUED	GL/SS
02	18/01/19	REV. AND PER. ARCH. PLAN.	SS
01	18/01/19	CONCEPT DESIGN ISSUED	JS
NO.	DATE	REVISION DESCRIPTION	DR.
SEAL:			

PROJECT:
MIX USE DEVELOP.
 ST. JOHNS ST., GEORGE ST., BULLER ST.
 PORT MOODY, B.C.

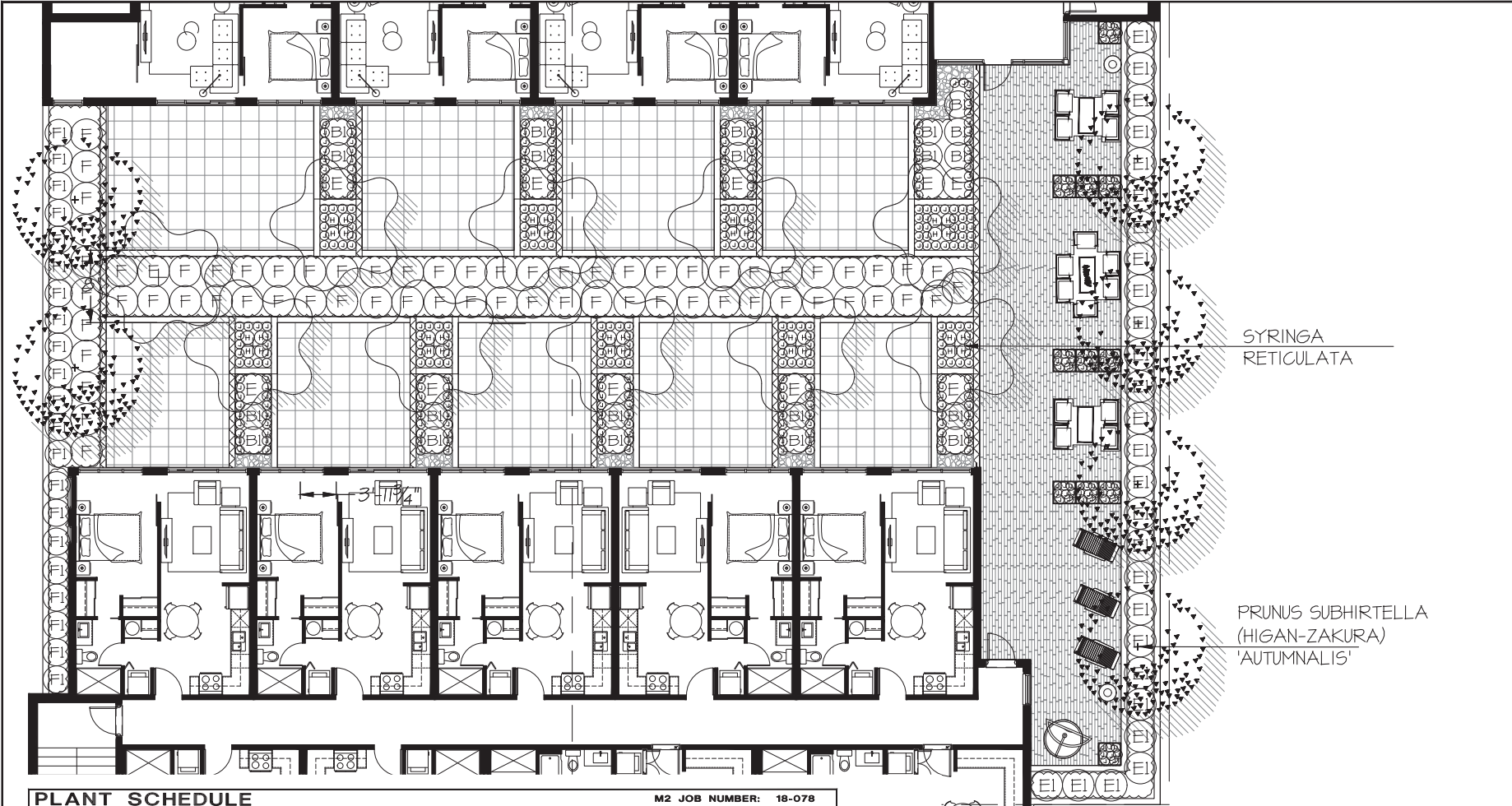
DRAWING TITLE:
**AMENITY SPACE PLAN
 BLDG A - LEVEL 2**

DATE:	20/10/25	DRAWING NUMBER:	
SCALE:	3/16"=1'-0"		
DRAWN:	JS		
DESIGN:	JS		
CHK'D:	MM		

L8

CF 20

M2LA PROJECT NUMBER: **18078**



M2 JOB NUMBER: 18-078			
KEY QTY	BOTANICAL NAME	COMMON NAME	PLANTED SIZE / REMARKS
TREE			
6	PRUNUS SUBHIRTILLA 'AUTUMNALIS'	AUTUMN FLOWERING CHERRY	TCM GAL; 15M STD; B4B
10	SYRINGA RETICULATA	IVORY SILK TREE	TCM GAL; 15M STD; B4B
SHRUB			
21	CAMELLIA SASANGUA 'SHISHI GASHIRA'	SHISHI GASHIRA CAMELLIA	#2 POT; 40CM #3 POT; 60CM
36	HOSTA 'AUGUST MOON'	AUGUST MOON HOSTA	#1 POT; SUN TOLLERANT
10	HYDRANGEA QUERCIFOLIA	OAKLEAF HYDRANGEA	#2 POT; 50CM #3 POT; 80CM
27	RHODODENDRON 'MAY DAY'	RHODODENDRON; RED; MAY	#2 POT; 20CM #3 POT; 30CM
21	TAXUS BACCATA	ENGLISH YEW	#2 POT; 50CM #3 POT; 80CM 15M B4B
66	VACCINIUM OVATUM	EVERGREEN HUCKLEBERRY	#1 POT; 20CM #2 POT; 30CM #3 POT; 50CM
ER			
34T	ASARUM CANADENSE	CANADIAN GINGER	#1 POT; 20CM

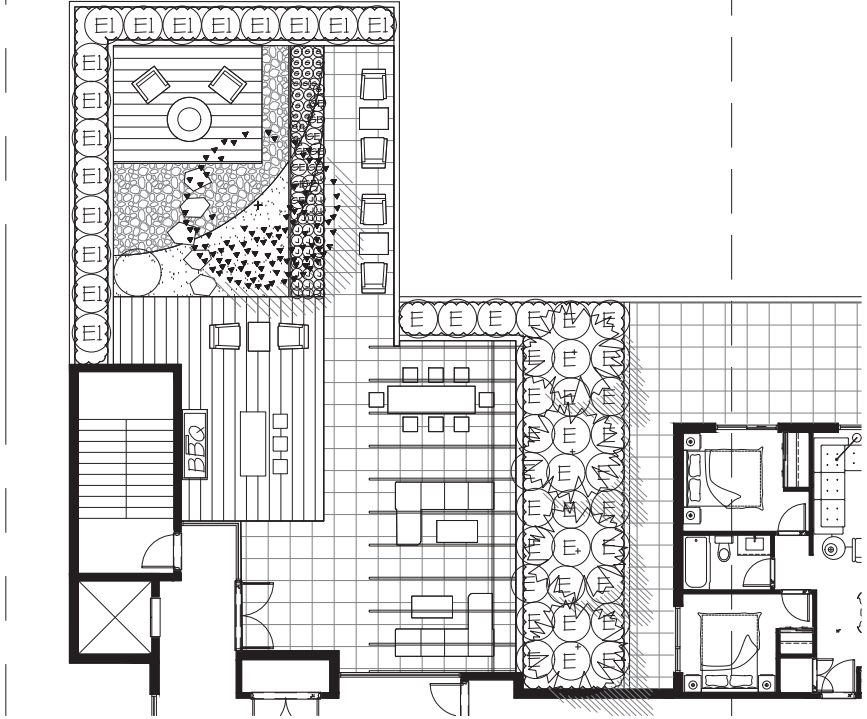
NOTES: * PLANT SIZES IN THIS LIST ARE SPECIFIED ACCORDING TO THE BC LANDSCAPE STANDARD, LATEST EDITION. CONTAINER SIZES SPECIFIED AS PER CNRA STANDARDS. BOTH PLANT SIZE AND CONTAINER SIZE ARE THE MINIMUM ACCEPTABLE SIZES. * REFER TO SPECIFICATIONS FOR DEFINED CONTAINER MEASUREMENTS AND OTHER PLANT MATERIAL REQUIREMENTS. * SEARCH AND REVIEW: MAKE PLANT MATERIAL AVAILABLE FOR OPTIONAL REVIEW BY LANDSCAPE ARCHITECT AT SOURCE OF SUPPLY. AREA OF SEARCH TO INCLUDE LOWER MAINLAND AND FRASER VALLEY. * SUBSTITUTIONS: OBTAIN WRITTEN APPROVAL FROM THE LANDSCAPE ARCHITECT PRIOR TO MAKING ANY SUBSTITUTIONS TO THE SPECIFIED MATERIAL. UNAPPROVED SUBSTITUTIONS WILL BE REJECTED. ALLOW A MINIMUM OF FIVE DAYS PRIOR TO DELIVERY FOR REQUEST TO SUBSTITUTE. SUBSTITUTIONS ARE SUBJECT TO BC LANDSCAPE STANDARD - DEFINITION OF CONDITIONS OF AVAILABILITY.

ALL PLANT MATERIAL MUST BE PROVIDED FROM CERTIFIED DISEASE FREE NURSERY. PROVIDE CERTIFICATION UPON REQUEST.

Copyright reserved. This drawing and design is the property of M2 Landscape Architects and may not be reproduced or used for other projects without their permission.



#220 - 26 Lorne Mews
 New Westminster, British Columbia
 V3M 3L7
 Tel: 604.553.0044
 Fax: 604.553.0045
 Email: office@m2la.com



PLANT SCHEDULE

M2 JOB NUMBER: 18-078

KEY	QTY	BOTANICAL NAME	COMMON NAME	PLANTED SIZE / REMARKS
TREE				
	4	PICEA OMORIKA	SERBIAN SPRUCE	3M HT; B4B
	1	PRUNUS SUBHIRTILLA 'AUTUMNALIS'	AUTUMN FLOWERING CHERRY	7CM CAL; 1.5M STD; B4B
SHRUB				
	33	HYDRANGEA QUERCIFOLIA	OAKLEAF HYDRANGEA	#2 POT; 50CM #3 POT; 80CM
	16	RHODODENDRON 'MAY DAY'	RHODODENDRON; RED; MAY	#2 POT; 20CM #3 POT; 30CM
GC				
	30	ASARUM CANADENSE	CANADIAN GINGER	#1 POT; 20CM
	10	ATHYRIUM NIPONICUM PICTUM 'REGAL RED'	REGAL RED JAPANESE PAINTED FERN	#1 POT; 30CM
	22	OXALIS OREGANA	REDWOOD SORREL	#1 POT

NOTES: * PLANT SIZES IN THIS LIST ARE SPECIFIED ACCORDING TO THE BC LANDSCAPE STANDARD, LATEST EDITION. CONTAINER SIZES SPECIFIED AS PER CNTA STANDARDS. BOTH PLANT SIZE AND CONTAINER SIZE ARE THE MINIMUM ACCEPTABLE SIZES. * REFER TO SPECIFICATIONS FOR DEFINED CONTAINER MEASUREMENTS AND OTHER PLANT MATERIAL REQUIREMENTS. * SEARCH AND REVIEW: MAKE PLANT MATERIAL AVAILABLE FOR OPTIONAL REVIEW BY LANDSCAPE ARCHITECT AT SOURCE OF SUPPLY. AREA OF SEARCH TO INCLUDE LOWER MAINLAND AND FRASER VALLEY. * SUBSTITUTIONS: OBTAIN WRITTEN APPROVAL FROM THE LANDSCAPE ARCHITECT PRIOR TO MAKING ANY SUBSTITUTIONS TO THE SPECIFIED MATERIAL. UNAPPROVED SUBSTITUTIONS WILL BE REJECTED. ALLOW A MINIMUM OF FIVE DAYS PRIOR TO DELIVERY FOR REQUEST TO SUBSTITUTE. SUBSTITUTIONS ARE SUBJECT TO BC LANDSCAPE STANDARD - DEFINITION OF CONDITIONS OF AVAILABILITY.

ALL PLANT MATERIAL MUST BE PROVIDED FROM CERTIFIED DISEASE FREE NURSERY. PROVIDE CERTIFICATION UPON REQUEST.

04	2020.09	ISSUED FOR CIP	SS
05	2020.11	CONCEPT DESIGN ISSUED	GL/SS
02	2018.08	REV. AND PER. ARCH. PLAN.	SS
01	2018.08	CONCEPT DESIGN ISSUED	JS

NO.	DATE	REVISION DESCRIPTION	DR.
-----	------	----------------------	-----

PROJECT:
MIX USE DEVELOP.
ST. JOHNS ST, GEORGE ST., BULLER ST.
PORT MOODY, B.C.

DRAWING TITLE:
AMENITY SPACE PLAN
BLDG-B LEVEL 6

DATE:	2018.06.25	DRAWING NUMBER:	
SCALE:	1/4"=1'-0"		
DRAWN:	JS		
DESIGN:	JS		
CHK'D:	MM		

L12

CF 20

Copyright reserved. This drawing and design is the property of M2 Landscape Architects and may not be reproduced or used for other projects without their permission.



#220 - 26 Lorne Mews
 New Westminster, British Columbia
 V3M 3L7
 Tel: 604.553.0044
 Fax: 604.553.0045
 Email: office@m2la.com



NO.	DATE	REVISION DESCRIPTION	DR.
04	2019.06.25	ISSUED FOR CIP	JS
03	2019.01	CONCEPT DESIGN ISSUED	GL/JS
02	2018.08	REV. AND PER. ARCH. PLAN	JS
01	2018.08	CONCEPT DESIGN ISSUED	JS

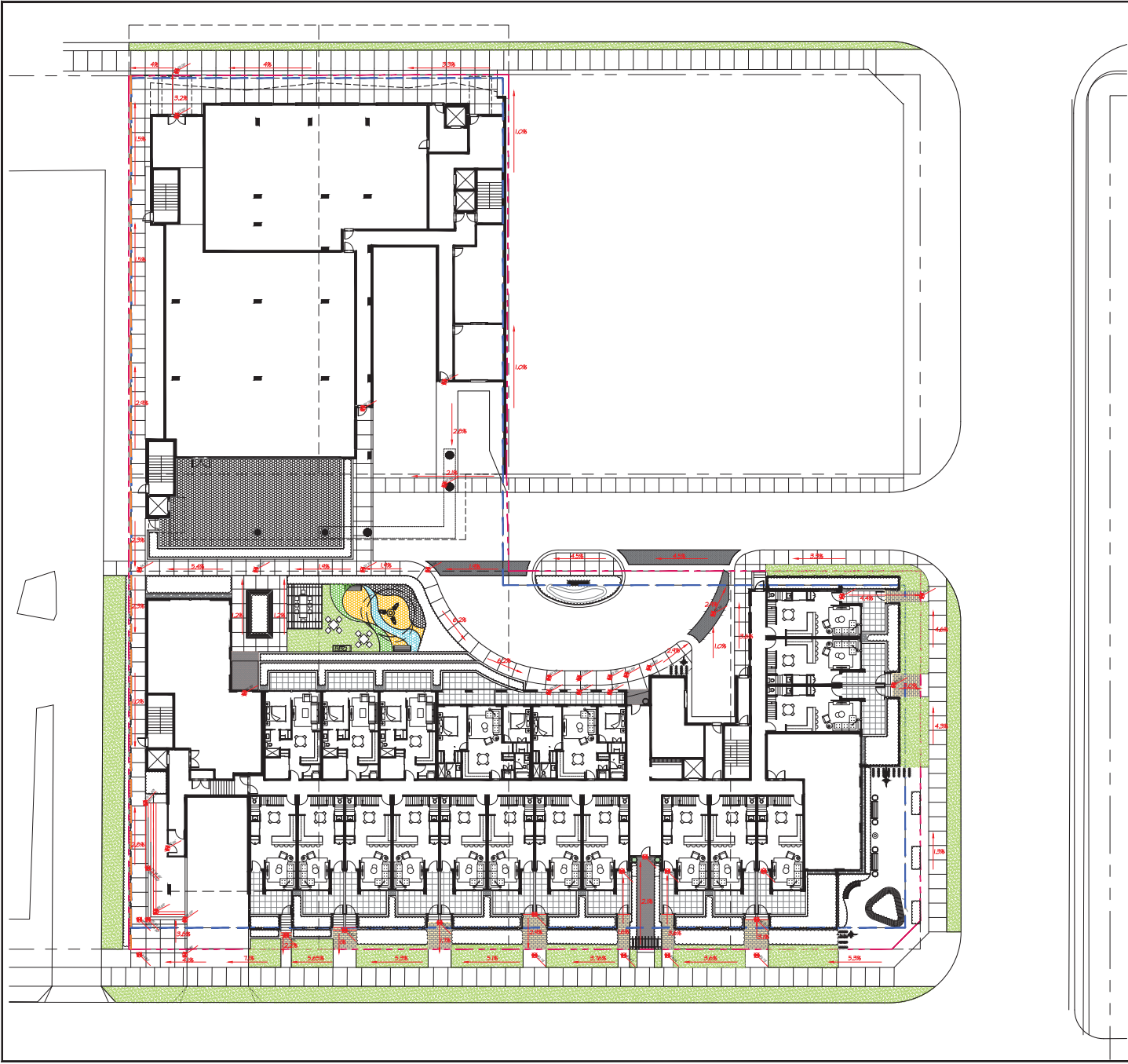
PROJECT:
MIX USE DEVELOP.
ST. JOHNS ST., GEORGE ST., BULLER ST.
PORT MOODY, B.C.

DRAWING TITLE:
GRADING PLAN
BLDG A AND B

DATE: 2019.06.25 DRAWING NUMBER:
 SCALE: 1/8"=1'-0"
 DRAWN: JS
 DESIGN: JS
 CHK'D: MM

L14
 CF 20

M2LA PROJECT NUMBER: 18078



©Copyright reserved. This drawing and design is the property of M2 Landscape Architects and may not be reproduced or used for other projects without their permission.



#220 - 26 Lorne Mews
 New Westminster, British Columbia
 V3M 3L7
 Tel: 604.553.0044
 Fax: 604.553.0045
 Email: office@m2la.com

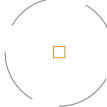





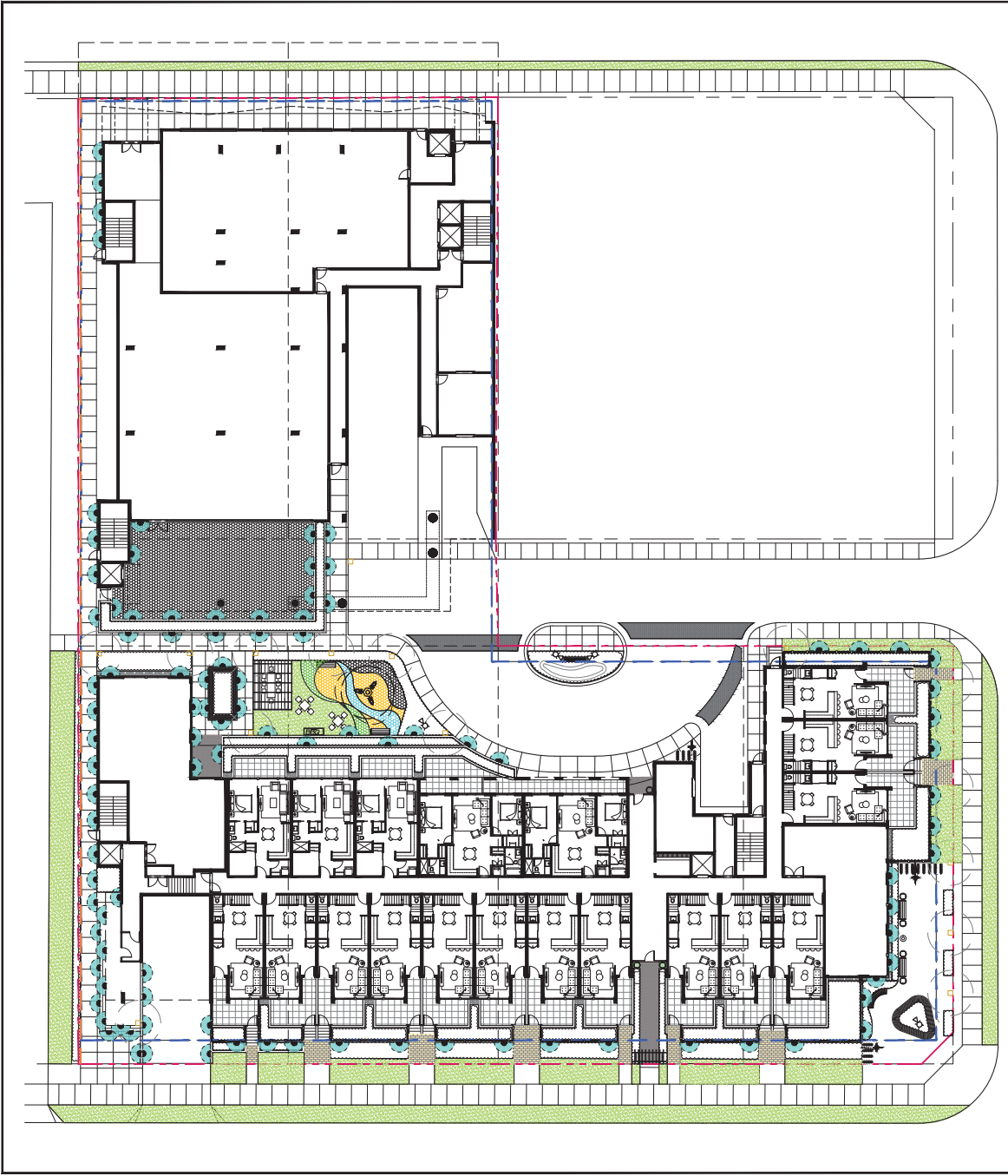
04	2017.09	ISSUED FOR CIP	JS
03	2016.11	CONCEPT DESIGN ISSUED	GL/SS
02	2016.08	REV. AND PERM. ARCH. PLAN.	JS
01	2016.08	CONCEPT DESIGN ISSUED	JS
NO.	DATE	REVISION DESCRIPTION	DR.

PROJECT:
MIX USE DEVELOP.
ST. JOHNS ST., GEORGE ST., BULLER ST.
PORT MOODY, B.C.

DRAWING TITLE: LIGHTING PLAN LEVEL 1	
DATE: 2018.06.25	DRAWING NUMBER: L15
SCALE: 1/8"=1'-0"	CF 20
DRAWN: JS	
DESIGN: JS	
CHK'D: MM	
M2LA PROJECT NUMBER:	18078

LIGHTING LEGEND

-  BOLLARD LIGHT: Hinkley Lighting - 15604BZ
Luna Bollard 1-50w MR-16
-  UP LIGHT
-  STEP/WALL FOR RETAINING WALLS: Hinkley Lighting - LUNA 16595K Small Wall Mount Lantern
-  HANGING LIGHTS ON TRELLIS



©Copyright reserved. This drawing and design is the property of M2 Landscape Architects and may not be reproduced or used for other projects without their permission.



LANDSCAPE ARCHITECTURE

#220 - 26 Lorne Mews
 New Westminster, British Columbia
 V3M 3L7
 Tel: 604.553.0044
 Fax: 604.553.0045
 Email: office@m2la.com



NO.	DATE	REVISION DESCRIPTION	DR.
04	2010.09	ISSUED FOR CIP	JS
03	2010.01	CONCEPT DESIGN ISSUED	GL/JS
02	2009.08	REV. AND PER. ARCH. PLAN.	JS
01	2008.08	CONCEPT DESIGN ISSUED	JS

NO. DATE REVISION DESCRIPTION DR.

SEAL:

PROJECT:

MIX USE DEVELOP.
 ST. JOHNS ST., GEORGE ST., BULLER ST.
 PORT MOODY, B.C.

DRAWING TITLE:

**LIGHTING PLAN
 BUILDING A LEVEL 2**

DATE: 2010.06.25 DRAWING NUMBER:

SCALE: 3/16"=1'-0"

DRAWN: JS

DESIGN: JS





CHK'D: MM

M2LA PROJECT NUMBER: 10078

CF 20



LIGHTING LEGEND

-  BOLLARD LIGHT: Hinkley Lighting - 15604BZ
Luna Bollard 1-50w MR-16
-  UP LIGHT
-  STEP/WALL FOR RETAINING WALLS: Hinkley Lighting - LUNA 16545K Small Wall Mount Lantern
-  HANGING LIGHTS ON TRELLIS

Copyright reserved. This drawing and design is the property of M2 Landscape Architects and may not be reproduced or used for other projects without their permission.



#220 - 26 Lorne Mews
 New Westminster, British Columbia
 V3M 3L7
 Tel: 604.553.0044
 Fax: 604.553.0045
 Email: office@m2la.com



NO.	DATE	REVISION DESCRIPTION	DR.
04	2019.06.25	ISSUED FOR CIP	JS
03	2019.01	CONCEPT DESIGN ISSUED	GL/JS
02	2018.12	REV. AND PER. ARCH. PLAN.	JS
01	2018.08	CONCEPT DESIGN ISSUED	JS

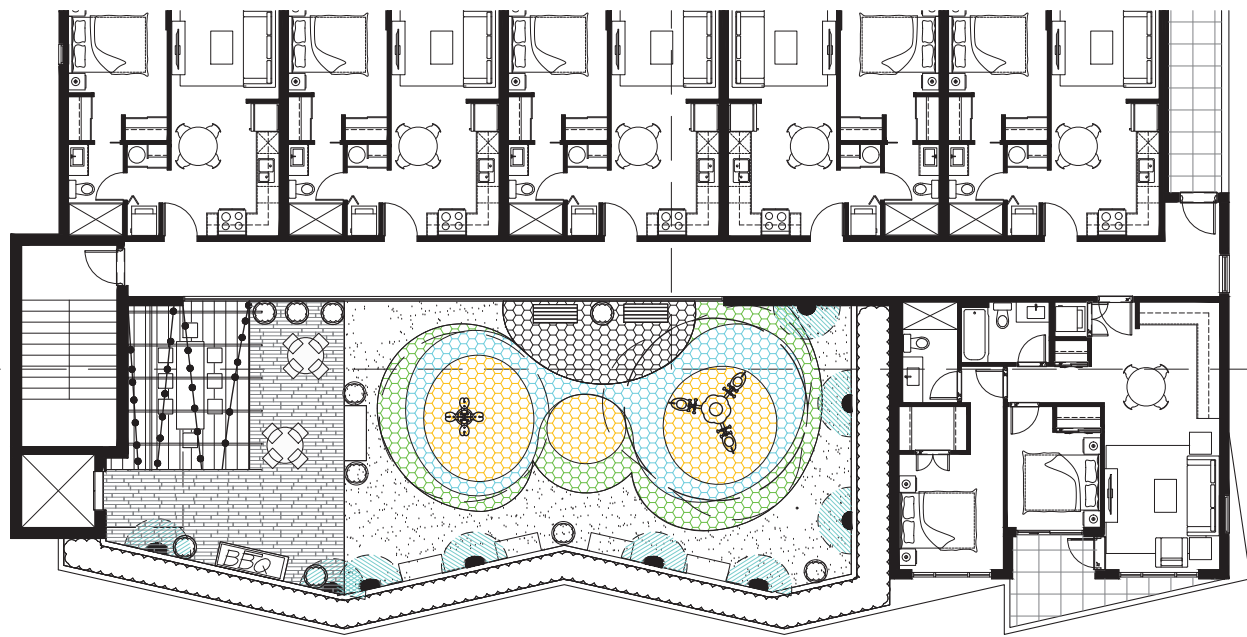
PROJECT:
MIX USE DEVELOP.
ST. JOHNS ST., GEORGE ST., BULLER ST.
PORT MOODY, B.C.

DRAWING TITLE:
LIGHTING PLAN
BUILDING A LEVEL 6





DATE: 2019.06.25 DRAWING NUMBER:
 SCALE: 3/16"=1'-0"
 DRAWN: JS
 DESIGN: JS
 CHECKED: MM

L17
 CF 20

M2LA PROJECT NUMBER: 18078



LIGHTING LEGEND

-  BOLLARD LIGHT: Hinkley Lighting
 - 15609BZ
 Luna Bollard 1-50w MR-16
-  UP LIGHT
-  STEP/WALL FOR RETAINING WALLS: Hinkley Lighting -
 LUNA 16545K Small Wall Mount Lantern
-  HANGING LIGHTS ON TRELLIS

M2-18078-10.dwg

©Copyright reserved. This drawing and design is the property of M2 Landscape Architects and may not be reproduced or used for other projects without their permission.



#220 - 26 Lorne Mews
 New Westminster, British Columbia
 V3M 3L7
 Tel: 604.553.0044
 Fax: 604.553.0045
 Email: office@m2la.com



04	2010.09	ISSUED FOR CIP	JS
03	2010.01	CONCEPT DESIGN ISSUED	GL/JS
02	2009.12	REV. AND PER. ARCH. PLAN.	JS
01	2009.08	CONCEPT DESIGN ISSUED	JS
NO.	DATE	REVISION DESCRIPTION	DR.

PROJECT:
MIX USE DEVELOP.
ST. JOHNS ST., GEORGE ST., BULLER ST.
PORT MOODY, B.C.

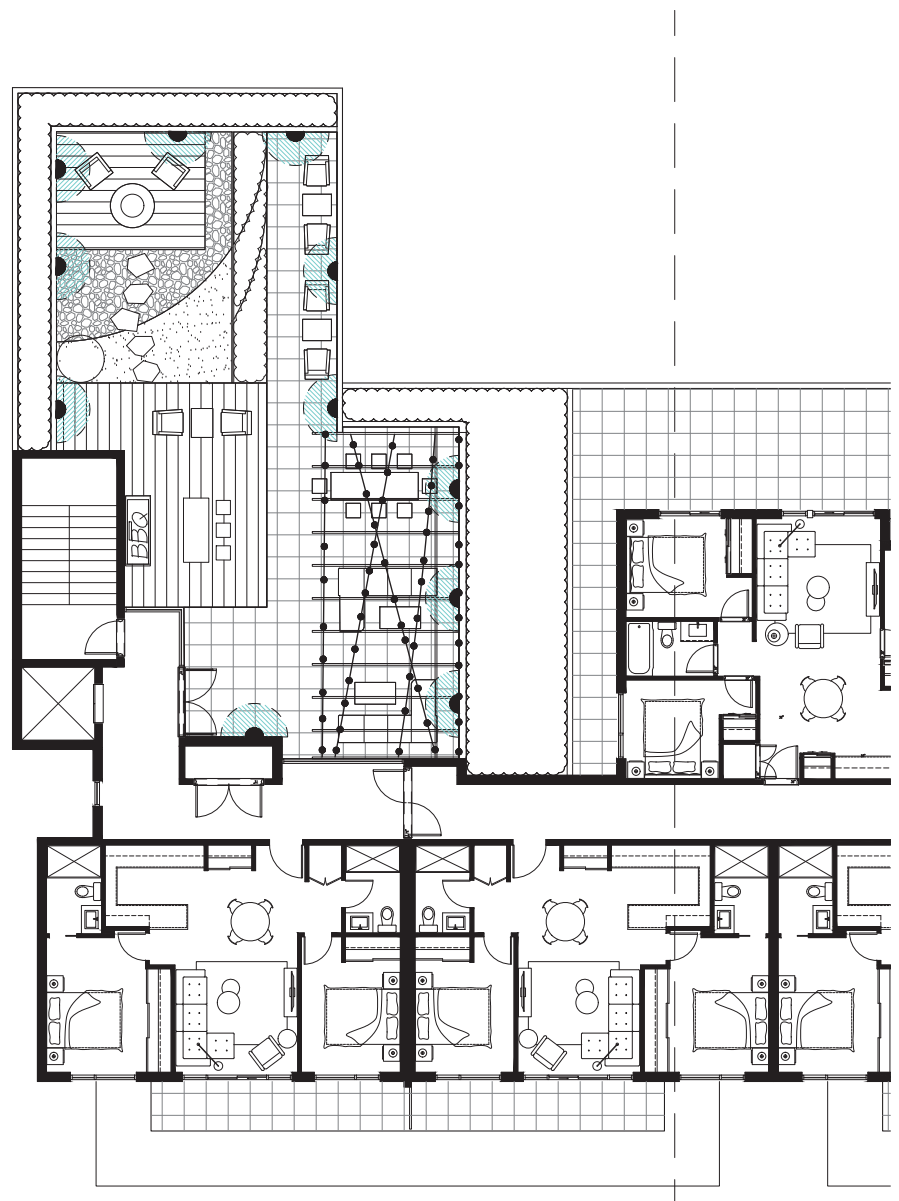
DRAWING TITLE:
LIGHTING PLAN
BLDG-B LEVEL 6

DATE: 2010.06.25 DRAWING NUMBER:
 SCALE: 3/16"=1'-0"
 DRAWN: JS
 DESIGN: JS
 CHKD: MM

L18
 CF 20

LIGHTING LEGEND

- BOLLARD LIGHT: Hinkley Lighting - 15604BZ
Luna Bollard 1-50w MR-16
- UP LIGHT
- STEP/WALL FOR RETAINING WALLS: Hinkley Lighting - LUNA 16549K Small Wall Mount Lantern
- HANGING LIGHTS ON TRELLIS



PART ONE GENERAL REQUIREMENTS

- 1.1 REFERENCES
1.2 CODES & LATEST EDITION
1.3 DESIGN RESPONSIBILITY
1.4 B.C. LANDSCAPE ARCHITECT ACT, 1996
1.5 INSIDER MATERIAL SPECIFICATIONS & STANDARD PRACTICES
1.6 STANDARD FOR LANDSCAPE ARCHITECTURE
1.7 MAJORIAL PLANS AND REGULATING SPECIFICATIONS
1.8 TESTING
1.9 CONTRACT
1.10 SUBMITTALS
1.11 SITE REVIEW
1.12 VENDOR/APP
1.13 MAINTENANCE

PART THREE SOFT LANDSCAPE DEVELOPMENT - CONT

- 3.1 APPLICABLE CODES
3.2 GENERAL NOTES
3.3 PLANTING
3.4 IRRIGATION
3.5 MAINTENANCE

PART THREE SOFT LANDSCAPE DEVELOPMENT - CONT

- 3.1 APPLICABLE CODES
3.2 GENERAL NOTES
3.3 PLANTING
3.4 IRRIGATION
3.5 MAINTENANCE

PART THREE SOFT LANDSCAPE DEVELOPMENT - CONT

- 3.1 APPLICABLE CODES
3.2 GENERAL NOTES
3.3 PLANTING
3.4 IRRIGATION
3.5 MAINTENANCE

PART TWO SCOPE OF WORK

- 2.1 SCOPE OF WORK
2.2 MATERIALS
2.3 PLANTING
2.4 IRRIGATION
2.5 MAINTENANCE

PART TWO SCOPE OF WORK

- 2.1 SCOPE OF WORK
2.2 MATERIALS
2.3 PLANTING
2.4 IRRIGATION
2.5 MAINTENANCE

PART TWO SCOPE OF WORK

- 2.1 SCOPE OF WORK
2.2 MATERIALS
2.3 PLANTING
2.4 IRRIGATION
2.5 MAINTENANCE

PART TWO SCOPE OF WORK

- 2.1 SCOPE OF WORK
2.2 MATERIALS
2.3 PLANTING
2.4 IRRIGATION
2.5 MAINTENANCE

Copyright reserved. This drawing and design is the property of M2 Landscape Architecture and may not be reproduced or used for other projects without their permission.



#220 - 26 Lorne Mews
New Westminster, British Columbia
V3M 3L7
Tel: 604.553.0044
Fax: 604.553.0045
Email: office@m2la.com

- CH 2/20/18 ISSUED FOR CIP
CH 2/20/18 CONCEPT DESIGN ISSUED
CH 2/20/18 REVISED PER ARCHITECT PLAN
CH 2/20/18 CONCEPT DESIGN ISSUED
CH 2/20/18



Table with 2 columns: NO. DATE, REVISION DESCRIPTION, DR.

Table with 2 columns: NO. DATE, REVISION DESCRIPTION, DR.

PROJECT:
MIX USE DEVELOP.
ST. JOHNS ST, GEORGE ST, BULLER ST,
PORT MOODY, B.C.

DRAWING TITLE:
LANDSCAPE SPECIFICATIONS

DATE: 2018.06.25 DRAWING NUMBER:
SCALE: 1/8" = 1'-0"
DRAWN: JTS
CHECKED: JTS
DESIGN: JTS
DATE: 2018.06.25 DRAWING NUMBER:
SCALE: 1/8" = 1'-0"
DRAWN: JTS
CHECKED: JTS
DESIGN: JTS