



City of Port Moody

Bylaw No. 3297

A Bylaw to close a portion of St. Andrews Street.

WHEREAS pursuant to s. 40 of the *Community Charter*, Council may adopt a bylaw to close a portion of a highway to traffic and remove its dedication as highway;

AND WHEREAS notice of adoption of this Bylaw has been published in a newspaper for two consecutive weeks prior to adoption and Council has provided an opportunity for persons who consider they are affected to make presentations to Council;

NOW THEREFORE, the Council of the City of Port Moody enacts as follows:

1. Citation

- 1.1 This Bylaw may be cited as “City of Port Moody Road Closure Bylaw – Portion of St Andrews Street, 2021, No. 3297”.

2. Legal Description

- 2.1 That the 404.4m² area shown in heavy black outline and identified as Parcel A on Reference Plan EPP 106548 dedicated as road on Plan 11618, District Lot 190, Group 1, New Westminster District, a copy of which is attached hereto as Schedule “A” and forms a part of this Bylaw, is hereby stopped up and closed to traffic of all kinds and the dedication as road is removed.

3. Authorization

- 3.1 The Mayor and Corporate Officer are hereby authorized to execute all documentation necessary to give effect to the provisions of this Bylaw, including the plan attached hereto.

4. Attachments and Schedules

- 4.1 The following schedule is attached to and forms part of this Bylaw:
 - Schedule A – Reference Plan EPP 106548.

5. Severability

- 5.1 If a portion of this Bylaw is found invalid by a court, it will be severed and the remainder of the Bylaw will remain in effect.

Read a first time this ___ day of _____, 2021.

Read a second time this ___ day of _____, 2021.

Read a third time this ___ day of _____, 2021.

Adopted this ___ day of _____, 2021.

R. Vagramov
Mayor

D. Shermer
Corporate Officer

I hereby certify that the above is a true copy of Bylaw No. 3297 of the City of Port Moody.

D. Shermer
Corporate Officer

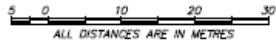
**REFERENCE PLAN TO ACCOMPANY CITY OF PORT MOODY BYLAW NO. 3297
TO CLOSE A PORTION OF ROAD DEDICATED ON PLAN 11618 DISTRICT LOT 190
GROUP 1 NEW WESTMINSTER DISTRICT**

PLAN EPP106548

PRELIM

PURSUANT TO SECTION 120, Land Title Act and
SECTION 40 OF the Community Charter.
B.C.G.S. 92G.026

SCALE 1 : 500



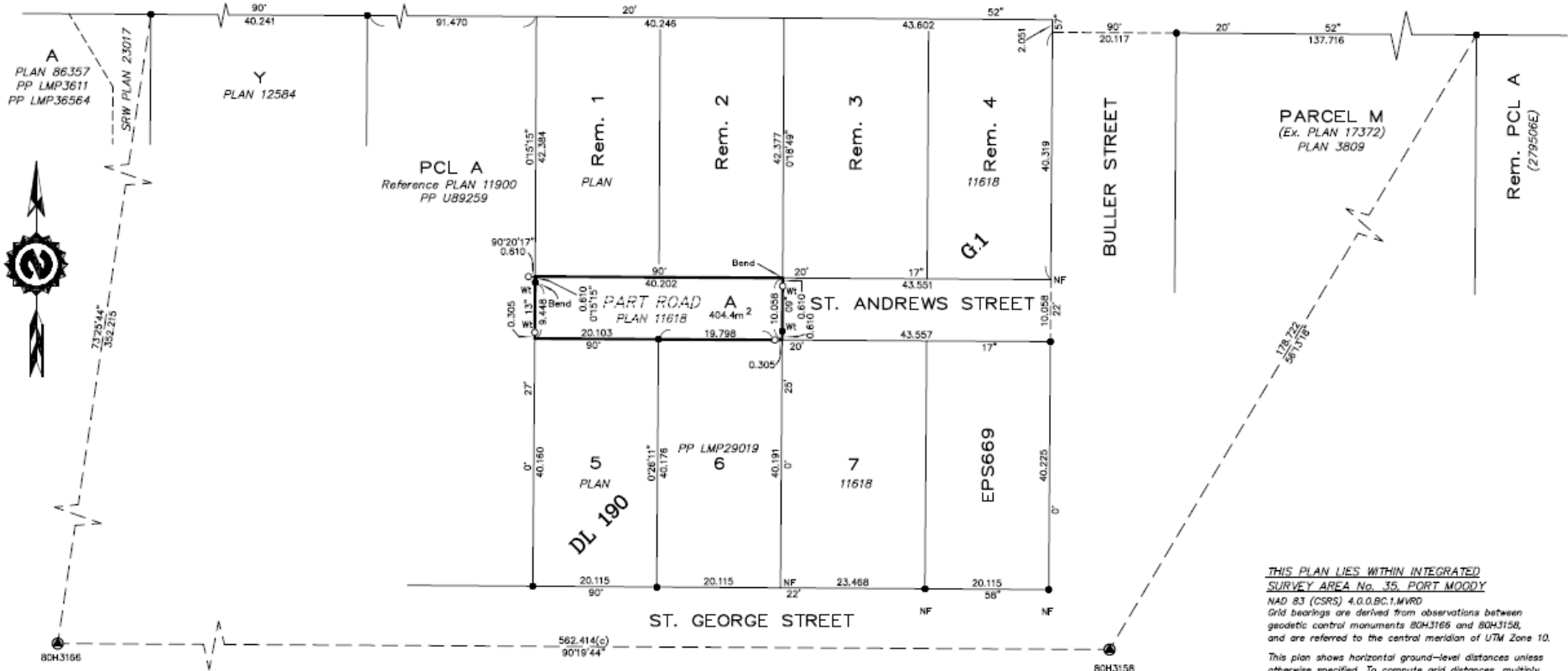
The intended plot size of this plan is 560mm in width
by 432mm in height (C size) when plotted at a scale of 1:500.

LEGEND

- DENOTES CONTROL MONUMENT FOUND
- DENOTES STANDARD IRON POST FOUND
- DENOTES STANDARD IRON POST SET
- PP DENOTES POSTING PLAN
- m² DENOTES SQUARE METERS
- (c) DENOTES CALCULATED
- NF DENOTES NOTHING FOUND

ST. JOHNS STREET

HIGHWAY PLAN 12019



**THIS PLAN LIES WITHIN INTEGRATED
SURVEY AREA No. 35, PORT MOODY**
NAD 83 (CSRS) 4.0.0.BC.1.MVRD
Grid bearings are derived from observations between
geodetic control monuments 80H3156 and 80H3158,
and are referred to the control meridian of UTM Zone 10.
This plan shows horizontal ground-level distances unless
otherwise specified. To compute grid distances, multiply
ground-level distances by the average combined factor
of 0.99960095 which has been derived from geodetic control
monuments 80H3156 and 80H3158.
The UTM coordinates and estimated absolute accuracy
achieved are derived from the mascot published
coordinates and standard deviations for geodetic control
monuments 80H3156 and 80H3158.
Some symbol locations have been exaggerated for clarity.

NAD83 (CSRS) 4.0.0.BC.1.MVRD UTM ZONE 10 COORDINATES				
TABLET MARKING	NORTHING	EASTING	COMBINED FACTOR	ESTIMATED ABSOLUTE ACCURACY
80H3156	5458103.304	511626.919	0.9996013	±0.01m
80H3166	5458106.530	511064.735	0.9996006	±0.02m

THIS PLAN LIES WITHIN THE METRO VANCOUVER REGIONAL DISTRICT

The field survey represented by this plan was completed on
the 4th day of December, 2020.
Craig Nakamura, BCLS 932